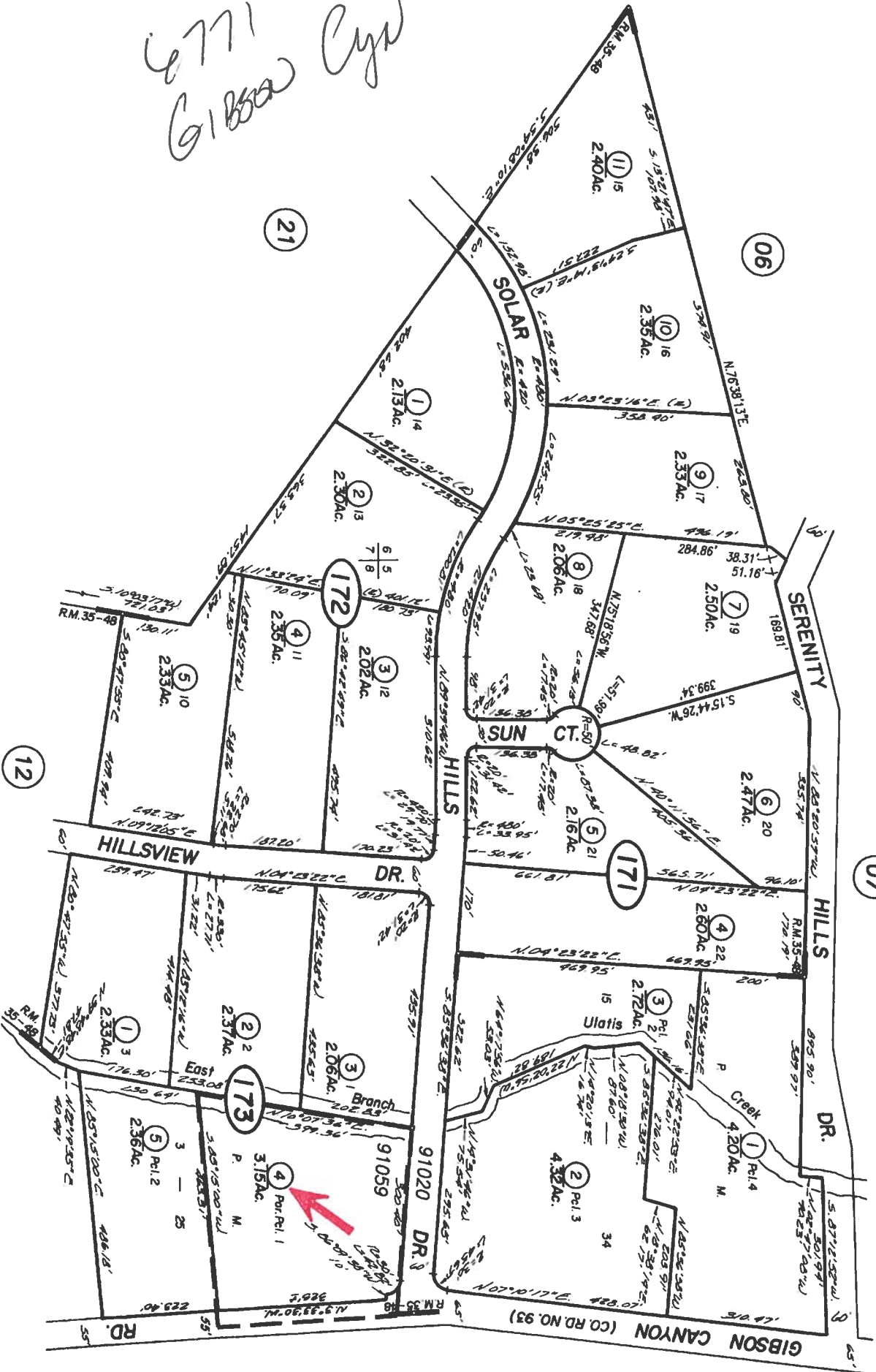


POR. LOT 37, RANCHO LOS PUTOS
 POR. SEC. 5,6,7 & 8, T.6N., R.1W., M.D.B. & M. EXT.

Tax Area Code
 91059
 91020



*6771
 Gibson Canyon*

Solar Hills Subdivision

R.M. Bk. 35 Pg. 48

Assessor's Block Numbers Shown in Ellipses, Assessor's Parcel Numbers Shown in Circles

171-07 Chg.(Lb)	1-30-13	Cr
ADJ. PG. 45	7-20-98	Pd
SBE 349-C	9-30-92	Pd
REVISION	DATE	BY

NOTE: This map is for assessment purposes only. It is not intended to define legal boundary rights or imply compliance with land division laws.

Assessor's Map Bk. 12:

County of Solano,