



FARMS | RANCHES | RECREATIONAL PROPERTIES | LAND | LUXURY ESTATES



751 Stone Lane Crescent Valley

160 +/- Acres

Eureka County, Nevada



775-761-0451 Cell | 775-455-0225 Office
www.OutdoorPropertiesofNevada.com

NV LIC. B.1002686.CORP



Introduction

Nice valley and mountain views from this 160 acre parcel in Crescent Valley. Legal access via gravel / dirt road. Spacious unfinished 100' x 30' shop with 10-foot high walls, concrete footing, insulated ceiling, one roll-up door and two walk-in doors. No pump currently on the well. Water test results and well log on file.

Located in the heart of north-central Nevada, Crescent Valley is a quiet rural community in western Eureka County known for its wide-open spaces, ranching heritage, and breathtaking high desert scenery. Nestled between several mountain ranges, including the Shoshone and Cortez Mountains, the valley offers expansive views, abundant wildlife, and a peaceful lifestyle that appeals to those seeking privacy, recreation, and room to roam. The area is deeply rooted in Nevada's agricultural and mining traditions and serves as a gateway to some of the state's most scenic public lands.

Despite its rural setting, Crescent Valley provides convenient access to essential services and regional employment centers. The community is located approximately 19 miles south of Interstate 80, making travel throughout northern Nevada straightforward. The city of Elko, the commercial hub of northeastern Nevada, is approximately 75 miles northeast and offers shopping, medical services, restaurants, and commercial air service. The historic town of Eureka, the county seat and one of Nevada's best-preserved mining communities, is approximately 65 miles south via State Route 306 and U.S. Highway 50.

Outdoor enthusiasts are drawn to the Crescent Valley area for its exceptional access to public lands, hunting, off-road recreation, horseback riding, and endless opportunities to explore Nevada's backcountry. The region enjoys a four-season climate with sunny days, low humidity, and spectacular sunsets. Whether you're looking for a recreational retreat, a future homesite, or a long-term land investment, Crescent Valley offers the freedom, space, and rugged beauty that define the Nevada lifestyle.



APN #005-410-005

<https://www.eurekacountynv.gov/departments/assessor/>

751 Stone Lane Crescent Valley
Eureka County, Nevada, 160 AC +/-



- Boundary
- 100 Year Floodplain
- 500 Year Floodplain
- Floodway
- Special
- Unmapped/ Not Included
- Water Wells

Ellie Perkins Stillman S.198106
P: 775-761-0451 outdoorpropertiesofnevada.com

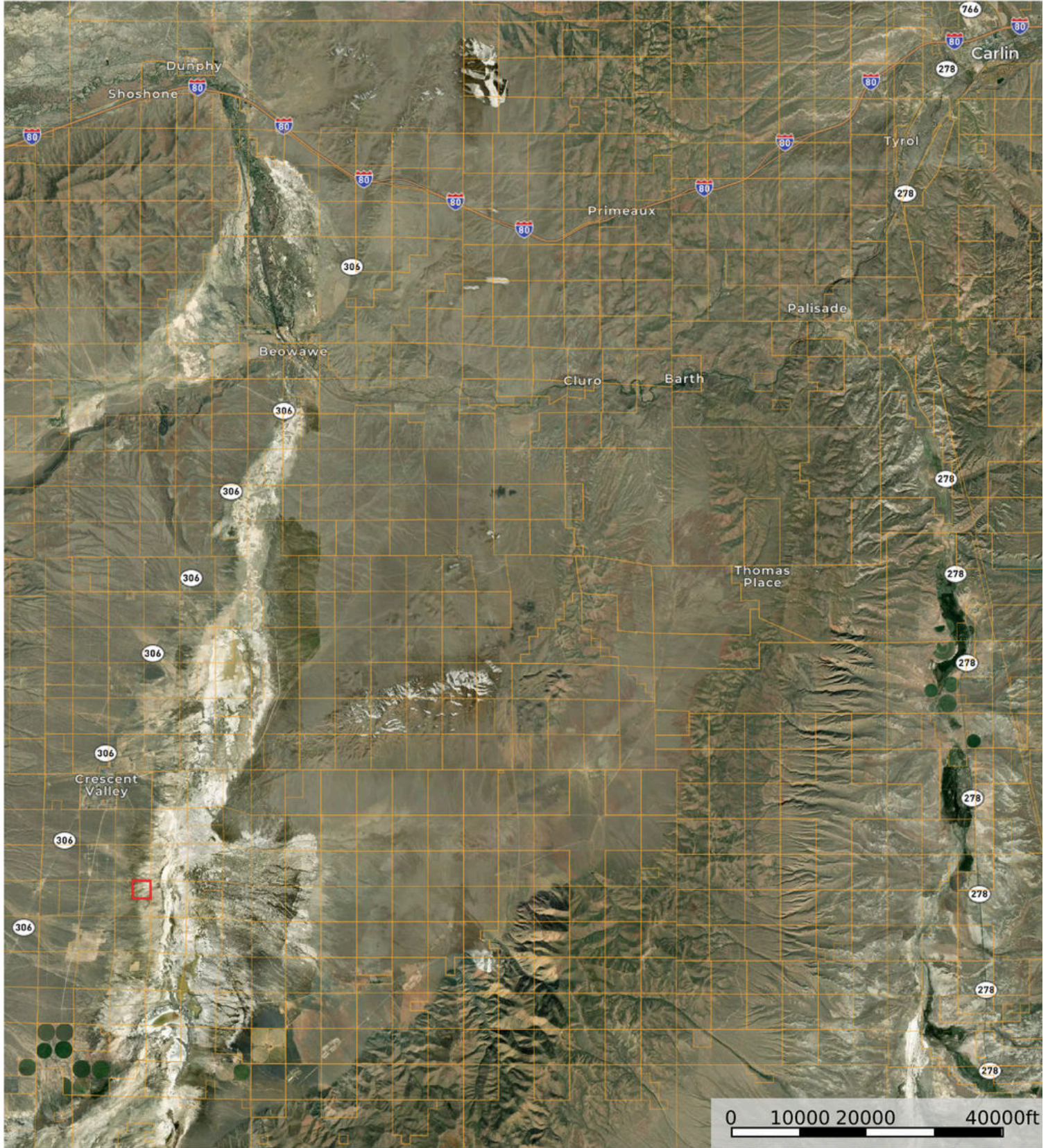
1 East Liberty Street Ste 600 Reno,

id. The information contained herein was obtained from sources deemed to be reliable. Land id® Services makes no warranties or guarantees as to the completeness or accuracy thereof.



751 Stone Lane Crescent Valley

Eureka County, Nevada, 160 AC +/-



- Boundary
- 100 Year Floodplain
- 500 Year Floodplain
- Floodway
- Special
- Unmapped/ Not Included
- Water Wells

Ellie Perkins Stillman S.198106

P: 775-761-0451

outdoorpropertiesofnevada.com

1 East Liberty Street Ste 600 Reno,

The information contained herein was obtained from sources deemed to be reliable. Land id® Services makes no warranties or guarantees as to the completeness or accuracy thereof.



Property Summary

- 160 +/- Acres
- Valley and mountain views
- Unfinished 3,000 sf shop building
- Well in place
- Legal access via gravel / dirt road



****Landscape photo is not subject property, but is Crescent Valley view***

All information has been obtained from sources deemed reliable by Outdoor Properties of Nevada, Inc. The accuracy of this information is not guaranteed or warranted by either Outdoor Properties of Nevada, Inc., or the Sellers, and prospective Buyers are expected to conduct their own independent investigation of the information contained herein. This offering is subject to prior sale, price change, correction, or withdrawal without notice and any offer presented does not have to be accepted.



Outdoor Properties of Nevada Inc.
707 Merchant Street, Suite 100
Vacaville, California 95688
Office: (775) 455-0225 Fax: (707) 455-0455
www.OutdoorPropertiesofNevada.com



Ellie Perkins | 775-761-0451
Ellie@ranchnevada.com
NV# S.198106