



United States  
Department of  
Agriculture

NRCS

Natural  
Resources  
Conservation  
Service

A product of the National  
Cooperative Soil Survey,  
a joint effort of the United  
States Department of  
Agriculture and other  
Federal agencies, State  
agencies including the  
Agricultural Experiment  
Stations, and local  
participants

# Custom Soil Resource Report for Intermountain Area, Parts of Lassen, Modoc, Shasta, and Siskiyou Counties, California

## Willow Tree Ranch



July 22, 2025

# Preface

---

Soil surveys contain information that affects land use planning in survey areas. They highlight soil limitations that affect various land uses and provide information about the properties of the soils in the survey areas. Soil surveys are designed for many different users, including farmers, ranchers, foresters, agronomists, urban planners, community officials, engineers, developers, builders, and home buyers. Also, conservationists, teachers, students, and specialists in recreation, waste disposal, and pollution control can use the surveys to help them understand, protect, or enhance the environment.

Various land use regulations of Federal, State, and local governments may impose special restrictions on land use or land treatment. Soil surveys identify soil properties that are used in making various land use or land treatment decisions. The information is intended to help the land users identify and reduce the effects of soil limitations on various land uses. The landowner or user is responsible for identifying and complying with existing laws and regulations.

Although soil survey information can be used for general farm, local, and wider area planning, onsite investigation is needed to supplement this information in some cases. Examples include soil quality assessments (<http://www.nrcs.usda.gov/wps/portal/nrcs/main/soils/health/>) and certain conservation and engineering applications. For more detailed information, contact your local USDA Service Center (<https://offices.sc.egov.usda.gov/locator/app?agency=nrcs>) or your NRCS State Soil Scientist ([http://www.nrcs.usda.gov/wps/portal/nrcs/detail/soils/contactus/?cid=nrcs142p2\\_053951](http://www.nrcs.usda.gov/wps/portal/nrcs/detail/soils/contactus/?cid=nrcs142p2_053951)).

Great differences in soil properties can occur within short distances. Some soils are seasonally wet or subject to flooding. Some are too unstable to be used as a foundation for buildings or roads. Clayey or wet soils are poorly suited to use as septic tank absorption fields. A high water table makes a soil poorly suited to basements or underground installations.

The National Cooperative Soil Survey is a joint effort of the United States Department of Agriculture and other Federal agencies, State agencies including the Agricultural Experiment Stations, and local agencies. The Natural Resources Conservation Service (NRCS) has leadership for the Federal part of the National Cooperative Soil Survey.

Information about soils is updated periodically. Updated information is available through the NRCS Web Soil Survey, the site for official soil survey information.

The U.S. Department of Agriculture (USDA) prohibits discrimination in all its programs and activities on the basis of race, color, national origin, age, disability, and where applicable, sex, marital status, familial status, parental status, religion, sexual orientation, genetic information, political beliefs, reprisal, or because all or a part of an individual's income is derived from any public assistance program. (Not all prohibited bases apply to all programs.) Persons with disabilities who require

alternative means for communication of program information (Braille, large print, audiotape, etc.) should contact USDA's TARGET Center at (202) 720-2600 (voice and TDD). To file a complaint of discrimination, write to USDA, Director, Office of Civil Rights, 1400 Independence Avenue, S.W., Washington, D.C. 20250-9410 or call (800) 795-3272 (voice) or (202) 720-6382 (TDD). USDA is an equal opportunity provider and employer.

# Contents

---

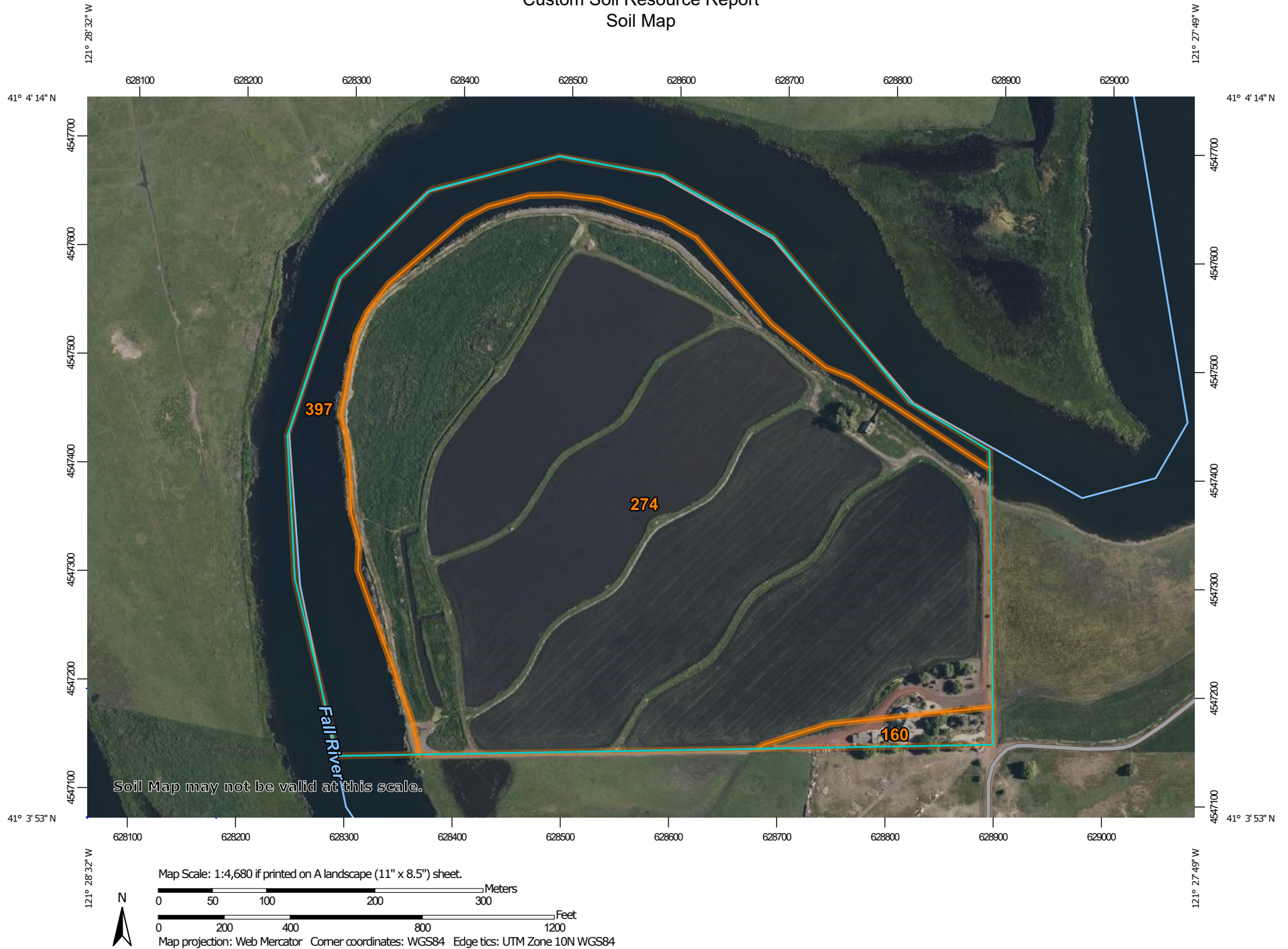
<b>Preface</b> .....	2
<b>Soil Map</b> .....	5
Soil Map.....	6
Legend.....	7
Map Unit Legend.....	9
Map Unit Descriptions.....	9
Intermountain Area, Parts of Lassen, Modoc, Shasta, and Siskiyou Counties, California.....	11
160—Dudgen-Graven complex, flooded, 0 to 5 percent slopes.....	11
274—Pastolla muck, 0 to 1 percent slopes.....	13
397—Water.....	15

# Soil Map

---

The soil map section includes the soil map for the defined area of interest, a list of soil map units on the map and extent of each map unit, and cartographic symbols displayed on the map. Also presented are various metadata about data used to produce the map, and a description of each soil map unit.


# Custom Soil Resource Report Soil Map



# Custom Soil Resource Report

## MAP LEGEND

### Area of Interest (AOI)

 Area of Interest (AOI)

### Soils

 Soil Map Unit Polygons

 Soil Map Unit Lines

 Soil Map Unit Points

### Special Point Features

 Blowout

 Borrow Pit

 Clay Spot

 Closed Depression

 Gravel Pit

 Gravelly Spot

 Landfill

 Lava Flow

 Marsh or swamp

 Mine or Quarry

 Miscellaneous Water

 Perennial Water

 Rock Outcrop

 Saline Spot

 Sandy Spot

 Severely Eroded Spot

 Sinkhole

 Slide or Slip

 Sodic Spot

 Spoil Area

 Stony Spot

 Very Stony Spot

 Wet Spot

 Other

 Special Line Features

### Water Features

 Streams and Canals

### Transportation

 Rails


 Interstate Highways

 US Routes

 Major Roads

 Local Roads

### Background

 Aerial Photography

## MAP INFORMATION

The soil surveys that comprise your AOI were mapped at 1:24,000.

Warning: Soil Map may not be valid at this scale.

Enlargement of maps beyond the scale of mapping can cause misunderstanding of the detail of mapping and accuracy of soil line placement. The maps do not show the small areas of contrasting soils that could have been shown at a more detailed scale.

Please rely on the bar scale on each map sheet for map measurements.

Source of Map: Natural Resources Conservation Service  
Web Soil Survey URL:  
Coordinate System: Web Mercator (EPSG:3857)

Maps from the Web Soil Survey are based on the Web Mercator projection, which preserves direction and shape but distorts distance and area. A projection that preserves area, such as the Albers equal-area conic projection, should be used if more accurate calculations of distance or area are required.

This product is generated from the USDA-NRCS certified data as of the version date(s) listed below.

Soil Survey Area: Intermountain Area, Parts of Lassen, Modoc, Shasta, and Siskiyou Counties, California  
Survey Area Data: Version 19, Aug 28, 2024

Soil map units are labeled (as space allows) for map scales 1:50,000 or larger.

Date(s) aerial images were photographed: Jun 9, 2019—Jun 14, 2019

The orthophoto or other base map on which the soil lines were compiled and digitized probably differs from the background

## MAP LEGEND

## MAP INFORMATION

imagery displayed on these maps. As a result, some minor shifting of map unit boundaries may be evident.



## Map Unit Legend

Map Unit Symbol	Map Unit Name	Acres in AOI	Percent of AOI
160	Dudgen-Graven complex, flooded, 0 to 5 percent slopes	1.3	1.7%
274	Pastolla muck, 0 to 1 percent slopes	59.1	81.8%
397	Water	11.9	16.5%
<b>Totals for Area of Interest</b>		<b>72.2</b>	<b>100.0%</b>

## Map Unit Descriptions

The map units delineated on the detailed soil maps in a soil survey represent the soils or miscellaneous areas in the survey area. The map unit descriptions, along with the maps, can be used to determine the composition and properties of a unit.

A map unit delineation on a soil map represents an area dominated by one or more major kinds of soil or miscellaneous areas. A map unit is identified and named according to the taxonomic classification of the dominant soils. Within a taxonomic class there are precisely defined limits for the properties of the soils. On the landscape, however, the soils are natural phenomena, and they have the characteristic variability of all natural phenomena. Thus, the range of some observed properties may extend beyond the limits defined for a taxonomic class. Areas of soils of a single taxonomic class rarely, if ever, can be mapped without including areas of other taxonomic classes. Consequently, every map unit is made up of the soils or miscellaneous areas for which it is named and some minor components that belong to taxonomic classes other than those of the major soils.

Most minor soils have properties similar to those of the dominant soil or soils in the map unit, and thus they do not affect use and management. These are called noncontrasting, or similar, components. They may or may not be mentioned in a particular map unit description. Other minor components, however, have properties and behavioral characteristics divergent enough to affect use or to require different management. These are called contrasting, or dissimilar, components. They generally are in small areas and could not be mapped separately because of the scale used. Some small areas of strongly contrasting soils or miscellaneous areas are identified by a special symbol on the maps. If included in the database for a given area, the contrasting minor components are identified in the map unit descriptions along with some characteristics of each. A few areas of minor components may not have been observed, and consequently they are not mentioned in the descriptions, especially where the pattern was so complex that it was impractical to make enough observations to identify all the soils and miscellaneous areas on the landscape.

The presence of minor components in a map unit in no way diminishes the usefulness or accuracy of the data. The objective of mapping is not to delineate pure taxonomic classes but rather to separate the landscape into landforms or landform segments that have similar use and management requirements. The

delineation of such segments on the map provides sufficient information for the development of resource plans. If intensive use of small areas is planned, however, onsite investigation is needed to define and locate the soils and miscellaneous areas.

An identifying symbol precedes the map unit name in the map unit descriptions. Each description includes general facts about the unit and gives important soil properties and qualities.

Soils that have profiles that are almost alike make up a *soil series*. Except for differences in texture of the surface layer, all the soils of a series have major horizons that are similar in composition, thickness, and arrangement.

Soils of one series can differ in texture of the surface layer, slope, stoniness, salinity, degree of erosion, and other characteristics that affect their use. On the basis of such differences, a soil series is divided into *soil phases*. Most of the areas shown on the detailed soil maps are phases of soil series. The name of a soil phase commonly indicates a feature that affects use or management. For example, Alpha silt loam, 0 to 2 percent slopes, is a phase of the Alpha series.

Some map units are made up of two or more major soils or miscellaneous areas. These map units are complexes, associations, or undifferentiated groups.

A *complex* consists of two or more soils or miscellaneous areas in such an intricate pattern or in such small areas that they cannot be shown separately on the maps. The pattern and proportion of the soils or miscellaneous areas are somewhat similar in all areas. Alpha-Beta complex, 0 to 6 percent slopes, is an example.

An *association* is made up of two or more geographically associated soils or miscellaneous areas that are shown as one unit on the maps. Because of present or anticipated uses of the map units in the survey area, it was not considered practical or necessary to map the soils or miscellaneous areas separately. The pattern and relative proportion of the soils or miscellaneous areas are somewhat similar. Alpha-Beta association, 0 to 2 percent slopes, is an example.

An *undifferentiated group* is made up of two or more soils or miscellaneous areas that could be mapped individually but are mapped as one unit because similar interpretations can be made for use and management. The pattern and proportion of the soils or miscellaneous areas in a mapped area are not uniform. An area can be made up of only one of the major soils or miscellaneous areas, or it can be made up of all of them. Alpha and Beta soils, 0 to 2 percent slopes, is an example.

Some surveys include *miscellaneous areas*. Such areas have little or no soil material and support little or no vegetation. Rock outcrop is an example.

## Intermountain Area, Parts of Lassen, Modoc, Shasta, and Siskiyou Counties, California

### 160—Dudgen-Graven complex, flooded, 0 to 5 percent slopes

#### Map Unit Setting

*National map unit symbol:* jbn  
*Elevation:* 3,300 to 3,500 feet  
*Mean annual precipitation:* 16 to 25 inches  
*Mean annual air temperature:* 50 to 52 degrees F  
*Frost-free period:* 120 to 130 days  
*Farmland classification:* Not prime farmland

#### Map Unit Composition

*Dudgen and similar soils:* 50 percent  
*Graven and similar soils:* 40 percent  
*Minor components:* 10 percent  
*Estimates are based on observations, descriptions, and transects of the mapunit.*

#### Description of Dudgen

##### Setting

*Landform:* Stream terraces  
*Landform position (two-dimensional):* Toeslope  
*Landform position (three-dimensional):* Tread  
*Microfeatures of landform position:* Swales  
*Down-slope shape:* Linear, concave  
*Across-slope shape:* Linear, concave  
*Parent material:* Alluvium derived from igneous rock

##### Typical profile

*H1 - 0 to 5 inches:* loam  
*H2 - 5 to 11 inches:* clay loam  
*H3 - 11 to 16 inches:* clay  
*H4 - 16 to 19 inches:* indurated  
*H5 - 19 to 60 inches:* stratified loamy sand to sandy loam

##### Properties and qualities

*Slope:* 0 to 2 percent  
*Depth to restrictive feature:* 10 to 20 inches to duripan  
*Drainage class:* Moderately well drained  
*Runoff class:* High  
*Capacity of the most limiting layer to transmit water (Ksat):* Very low (0.00 to 0.00 in/hr)  
*Depth to water table:* About 0 inches  
*Frequency of flooding:* Occasional  
*Frequency of ponding:* None  
*Calcium carbonate, maximum content:* 2 percent  
*Maximum salinity:* Nonsaline to very slightly saline (0.0 to 2.0 mmhos/cm)  
*Available water supply, 0 to 60 inches:* Very low (about 2.6 inches)

##### Interpretive groups

*Land capability classification (irrigated):* 4w  
*Land capability classification (nonirrigated):* 4w  
*Hydrologic Soil Group:* D

## Custom Soil Resource Report

*Ecological site:* R021XG906CA - Shallow Clayey  
*Hydric soil rating:* No

### Description of Graven

#### Setting

*Landform:* Stream terraces  
*Landform position (two-dimensional):* Toeslope  
*Landform position (three-dimensional):* Tread  
*Microfeatures of landform position:* Mounds  
*Down-slope shape:* Linear, convex  
*Across-slope shape:* Linear, convex  
*Parent material:* Alluvium derived from igneous rock

#### Typical profile

*H1 - 0 to 2 inches:* silt loam  
*H2 - 2 to 12 inches:* clay loam  
*H3 - 12 to 20 inches:* clay loam  
*H4 - 20 to 24 inches:* indurated  
*H5 - 24 to 60 inches:* stratified loamy sand to silt loam

#### Properties and qualities

*Slope:* 2 to 5 percent  
*Depth to restrictive feature:* 20 to 40 inches to duripan  
*Drainage class:* Moderately well drained  
*Runoff class:* High  
*Capacity of the most limiting layer to transmit water (Ksat):* Very low (0.00 to 0.00 in/hr)  
*Depth to water table:* About 6 to 36 inches  
*Frequency of flooding:* Occasional  
*Frequency of ponding:* None  
*Calcium carbonate, maximum content:* 1 percent  
*Maximum salinity:* Nonsaline to very slightly saline (0.0 to 2.0 mmhos/cm)  
*Available water supply, 0 to 60 inches:* Low (about 3.2 inches)

#### Interpretive groups

*Land capability classification (irrigated):* 3e  
*Land capability classification (nonirrigated):* 3e  
*Hydrologic Soil Group:* D  
*Ecological site:* R021XG906CA - Shallow Clayey  
*Hydric soil rating:* No

### Minor Components

#### Unnamed, like dudgen but <35% clay in subsoil

*Percent of map unit:* 3 percent  
*Landform:* Stream terraces  
*Landform position (two-dimensional):* Toeslope  
*Landform position (three-dimensional):* Tread  
*Microfeatures of landform position:* Swales  
*Down-slope shape:* Linear, concave  
*Across-slope shape:* Linear, concave  
*Hydric soil rating:* No

#### Dotta

*Percent of map unit:* 2 percent  
*Landform:* Stream terraces

## Custom Soil Resource Report

*Landform position (two-dimensional):* Footslope  
*Landform position (three-dimensional):* Tread  
*Down-slope shape:* Linear  
*Across-slope shape:* Linear  
*Hydric soil rating:* No

### **Cupvar**

*Percent of map unit:* 2 percent  
*Landform:* Stream terraces  
*Landform position (two-dimensional):* Toeslope  
*Landform position (three-dimensional):* Tread  
*Microfeatures of landform position:* Swales  
*Down-slope shape:* Linear, concave  
*Across-slope shape:* Linear, concave  
*Hydric soil rating:* No

### **Pit**

*Percent of map unit:* 2 percent  
*Landform:* Stream terraces  
*Landform position (two-dimensional):* Toeslope  
*Landform position (three-dimensional):* Tread  
*Microfeatures of landform position:* Swales  
*Down-slope shape:* Linear, concave  
*Across-slope shape:* Linear, concave  
*Hydric soil rating:* Yes

### **Unnamed, soils shallow to diatomaceous earth**

*Percent of map unit:* 1 percent  
*Landform:* Stream terraces  
*Landform position (two-dimensional):* Footslope  
*Landform position (three-dimensional):* Tread  
*Down-slope shape:* Linear  
*Across-slope shape:* Linear  
*Hydric soil rating:* No

## **274—Pastolla muck, 0 to 1 percent slopes**

### **Map Unit Setting**

*National map unit symbol:* jbx4  
*Elevation:* 3,300 to 4,180 feet  
*Mean annual precipitation:* 12 to 20 inches  
*Mean annual air temperature:* 48 to 52 degrees F  
*Frost-free period:* 100 to 130 days  
*Farmland classification:* Prime farmland if irrigated and drained

### **Map Unit Composition**

*Pastolla and similar soils:* 90 percent  
*Minor components:* 10 percent  
*Estimates are based on observations, descriptions, and transects of the mapunit.*

## Description of Pastolla

### Setting

*Landform:* Basin floors  
*Landform position (two-dimensional):* Toeslope  
*Landform position (three-dimensional):* Tread  
*Down-slope shape:* Linear  
*Across-slope shape:* Linear  
*Parent material:* Stratified alluvium from volcanic ash

### Typical profile

*Oa - 0 to 5 inches:* muck  
*H2 - 5 to 10 inches:* mucky silt loam  
*H3 - 10 to 24 inches:* stratified very fine sandy loam to silt loam  
*H4 - 24 to 31 inches:* stratified loam to silty clay  
*H5 - 31 to 44 inches:* stratified loam to clay  
*H6 - 44 to 60 inches:* coarse sandy loam

### Properties and qualities

*Slope:* 0 to 1 percent  
*Depth to restrictive feature:* More than 80 inches  
*Drainage class:* Very poorly drained  
*Runoff class:* Very high  
*Capacity of the most limiting layer to transmit water (Ksat):* Moderately low to moderately high (0.06 to 0.20 in/hr)  
*Depth to water table:* About 0 to 12 inches  
*Frequency of flooding:* Frequent  
*Frequency of ponding:* None  
*Calcium carbonate, maximum content:* 2 percent  
*Maximum salinity:* Nonsaline to very slightly saline (0.0 to 2.0 mmhos/cm)  
*Sodium adsorption ratio, maximum:* 1.0  
*Available water supply, 0 to 60 inches:* Very high (about 21.3 inches)

### Interpretive groups

*Land capability classification (irrigated):* 4w  
*Land capability classification (nonirrigated):* 4w  
*Hydrologic Soil Group:* C/D  
*Ecological site:* R021XG915CA - Wet Meadow  
*Hydric soil rating:* Yes

## Minor Components

### Pit

*Percent of map unit:* 4 percent  
*Landform:* Basin floors  
*Landform position (two-dimensional):* Toeslope  
*Landform position (three-dimensional):* Tread  
*Down-slope shape:* Linear  
*Across-slope shape:* Linear  
*Hydric soil rating:* Yes

### Whipp

*Percent of map unit:* 3 percent  
*Landform:* Basin floors  
*Landform position (two-dimensional):* Toeslope  
*Landform position (three-dimensional):* Tread

## Custom Soil Resource Report

*Down-slope shape:* Linear  
*Across-slope shape:* Linear  
*Hydric soil rating:* Yes

### **Unnamed, organic layer**

*Percent of map unit:* 2 percent  
*Landform:* Basin floors  
*Landform position (two-dimensional):* Toeslope  
*Landform position (three-dimensional):* Tread  
*Down-slope shape:* Linear  
*Across-slope shape:* Linear  
*Hydric soil rating:* Yes

### **Unnamed**

*Percent of map unit:* 1 percent  
*Landform:* Basin floors  
*Landform position (two-dimensional):* Toeslope  
*Landform position (three-dimensional):* Tread  
*Down-slope shape:* Linear  
*Across-slope shape:* Linear  
*Hydric soil rating:* Yes

## **397—Water**

### **Map Unit Composition**

*Water:* 100 percent  
*Estimates are based on observations, descriptions, and transects of the mapunit.*