

PALO

Escrito Ranch



\$17,700,000 | 8,811 ± ACRES | MONTEREY COUNTY

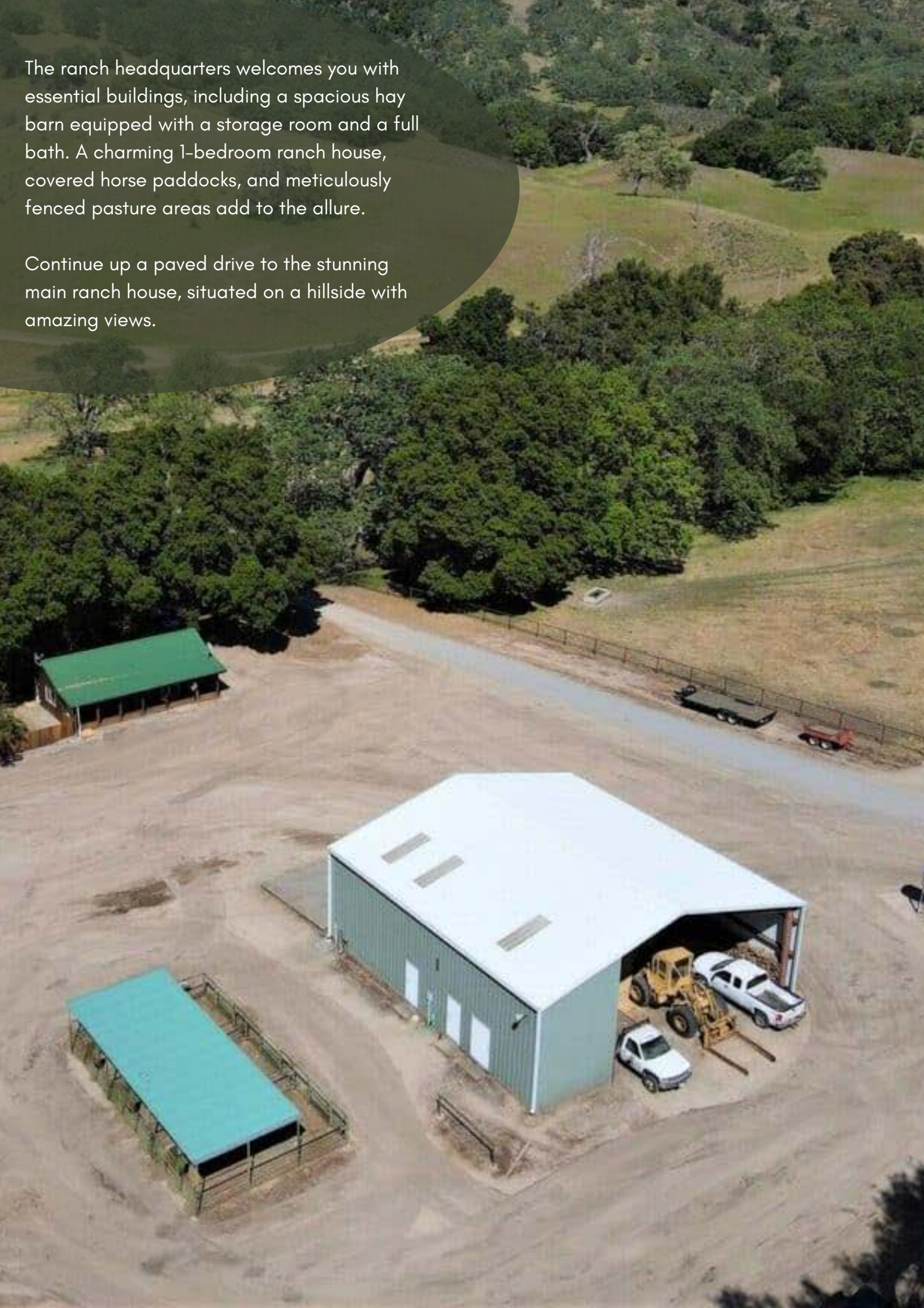
Discover an expansive 8,811 acres of coastal range land, where a custom 4-bedroom home, an additional 1-bedroom residence, a barn, horse pens, a meandering creek, and a fully operational cattle ranch await.

Nestled atop the highest peak in the Santa Lucia Mountain Range, this property offers unparalleled vistas of the Salinas Valley, Carmel Valley, and, on a clear day, the enchanting sights of Santa Cruz, Carmel by the Sea, and the vast expanse of the ocean.

- The 785 acre BELL RANCH bordering to the south is also for sale. Listed at \$5,700,000.

The ranch headquarters welcomes you with essential buildings, including a spacious hay barn equipped with a storage room and a full bath. A charming 1-bedroom ranch house, covered horse paddocks, and meticulously fenced pasture areas add to the allure.

Continue up a paved drive to the stunning main ranch house, situated on a hillside with amazing views.



PALO ESCRITO RANCH

CARMEL CALIFORNIA



ADDRESS

38633 E Carmel Valley Road
Carmel, California

COORDINATES:

36.3598278N, 121W

TAXES:

\$23,257/year (2023)



THE HEART OF THIS HOME
BEATS WITH WARMTH EMANATING FROM
A STUNNING RIVER ROCK HEARTH
FIREPLACE

Welcome to your dream haven, a custom 3000 Sq Ft home that effortlessly blends luxury and comfort. This architectural masterpiece invites you to experience the epitome of modern living with 4 bedrooms and 2 bathrooms meticulously crafted to exceed your expectations.

Open kitchen that beckons culinary creativity, a space where the aroma of home-cooked delights mingles with the joy of shared moments. The dining area, bathed in natural light, becomes a haven for family gatherings.



CATTLE

This isn't merely a cattle operation;
it's a testament to the owners' commitment to sustainable farming, an ongoing dialogue with the land and its inhabitants.

The pastures aren't just fields;
they are stages where the daily drama of rural life unfolds, from the gentle grazing of spring to the robust vitality of summer.

The cattle operation has been the main focus for the owners, running up to 200 pair year-round, or, 400 pair from April 1st to September 1st, depending on the year.

Welcome to a world where each hoofprint tells a story, and every season brings a new verse to the pastoral poetry of the countryside.



WATER

An intricate stock water system has been set up from multiple wells, together with underground piping, supplying water to 60 +/- livestock water troughs.

Beneficial to wildlife as well.

There are numerous seasonal ponds and creeks throughout the property.



The ranch enjoys income from tower rentals, as well as a hunting lease which has been in place for 35 years.



RECREATION

Hunting and recreational opportunities are abundant. Black tail deer, wild boar, turkeys, dove, quail and wild pigeon.

Miles of roads and trails for ATV's or horseback riding. Enjoy camping on your own property, you'll always have a camp site available..



WILLIAMSON ACT

The entire 8,811 acres benefits from being enrolled in the Williamson Act. A program that grants advantageous tax benefits to the property owner.

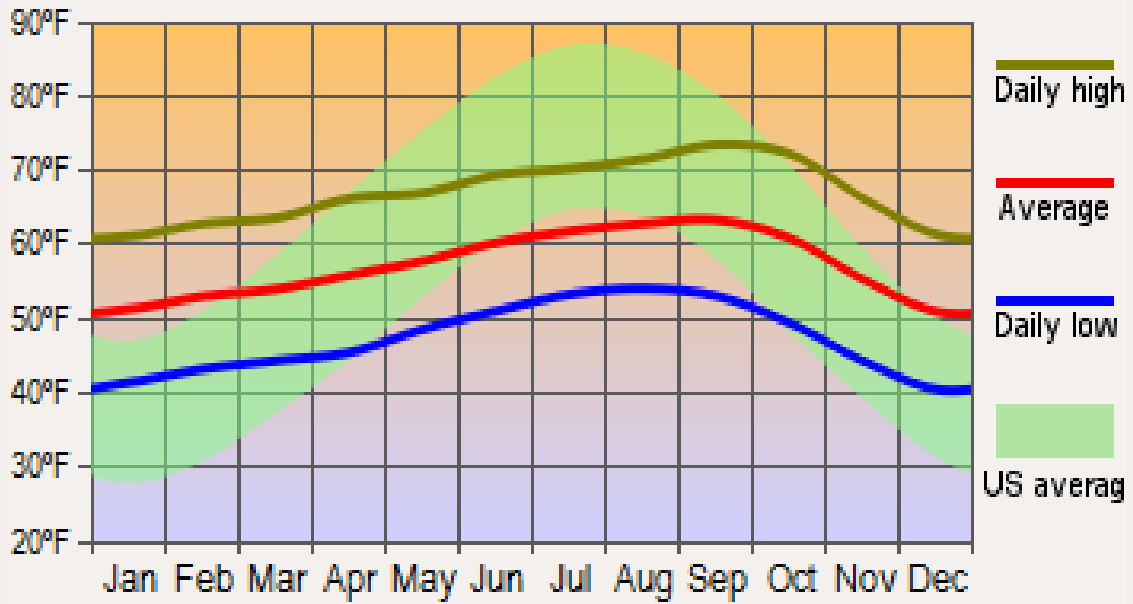




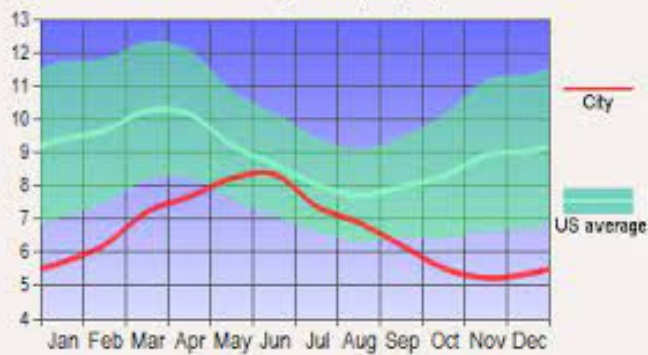


WEATHER

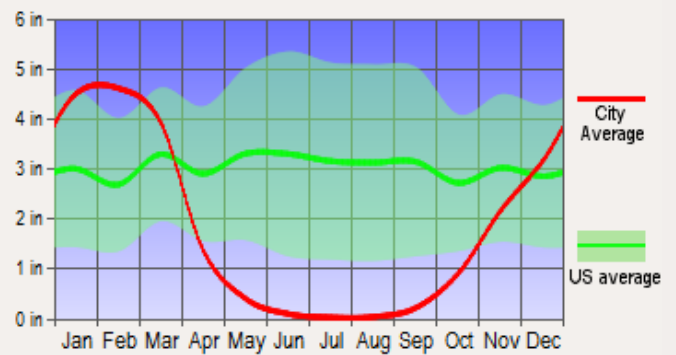
Average Temperatures



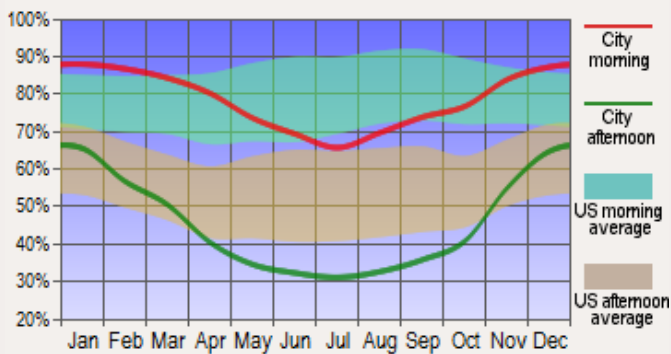
Wind Speed (mph)



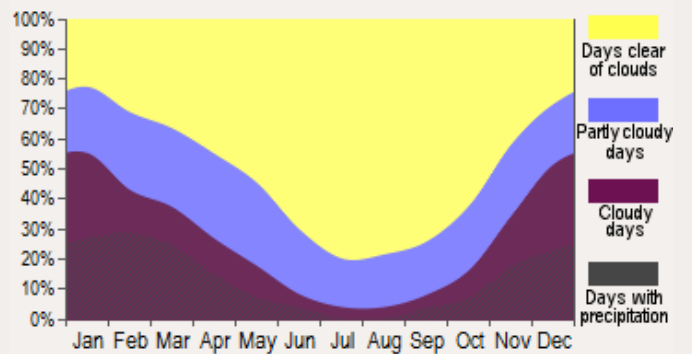
Precipitation



Humidity

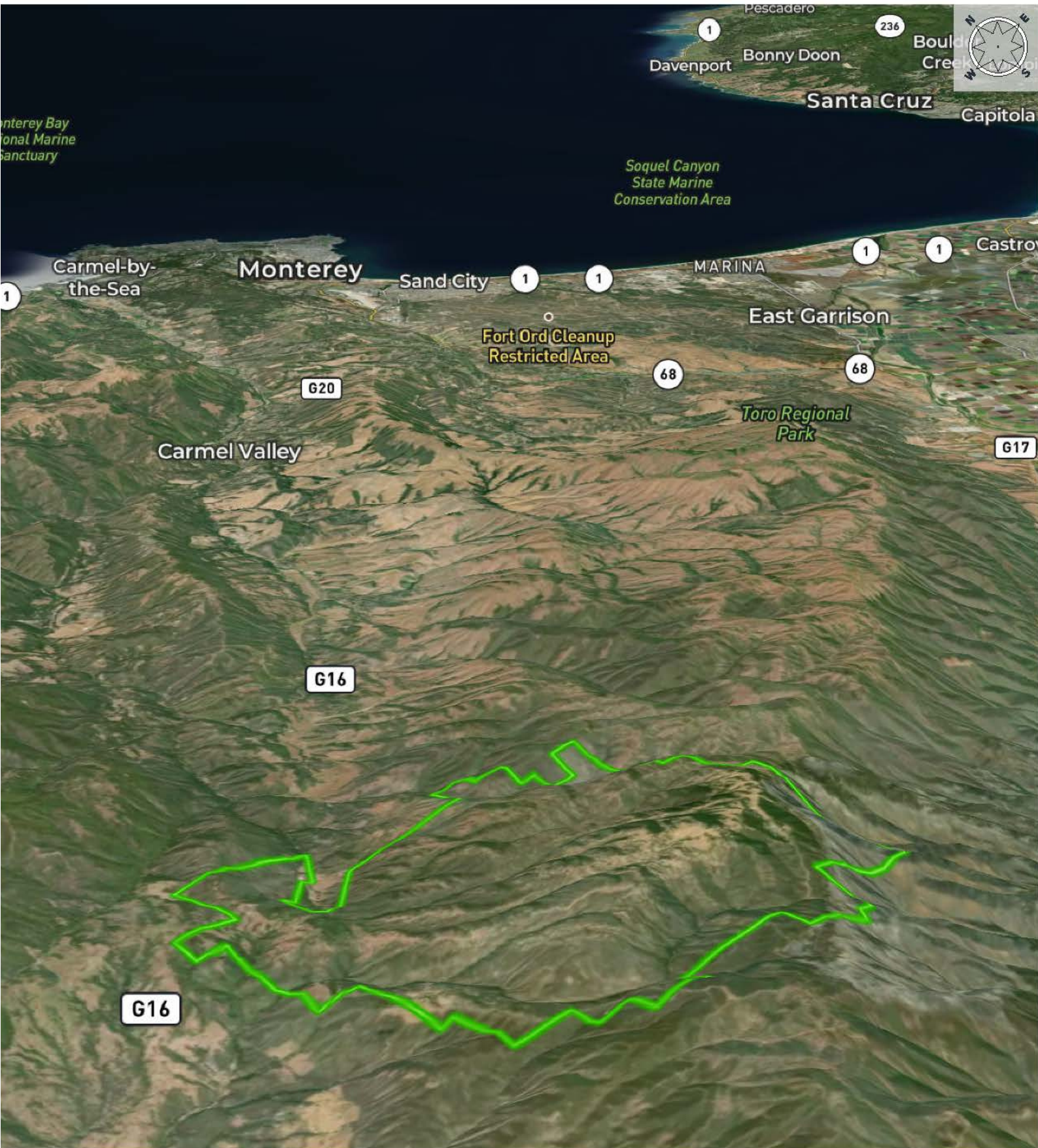


Cloudy Days



Palo Escrito 3D Sea view

Carmel splits
California, AC +/-



Boundary 2 1 1

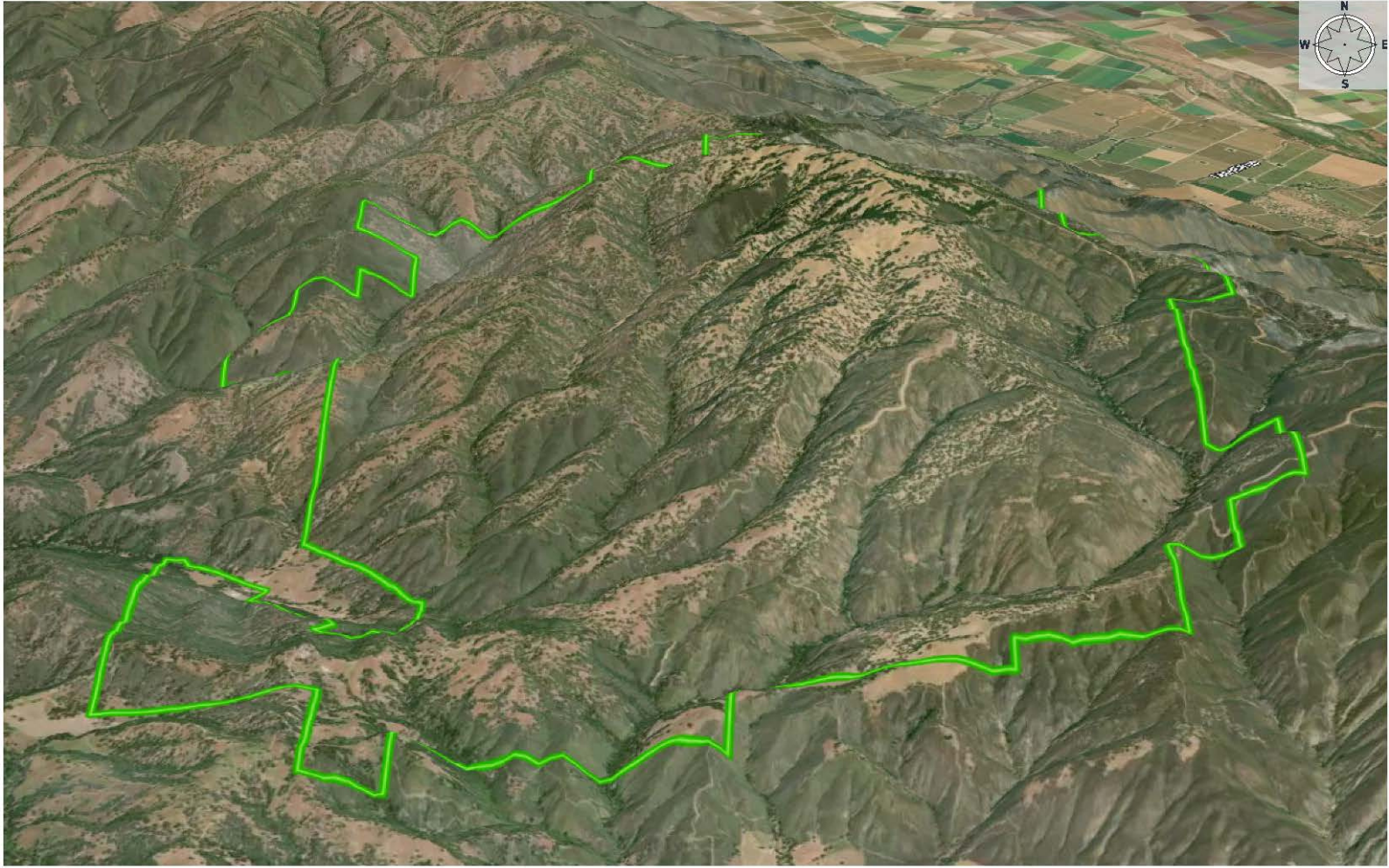
Dennis Prins
P: 530-410-5755

denny@caoutdoorproperties.com

id. The information contained herein was obtained from sources deemed to be reliable. Land id™ Services makes no warranties or guarantees as to the completeness or accuracy thereof.

Palo Escrito 3D

Carmel splits
California, AC +/-

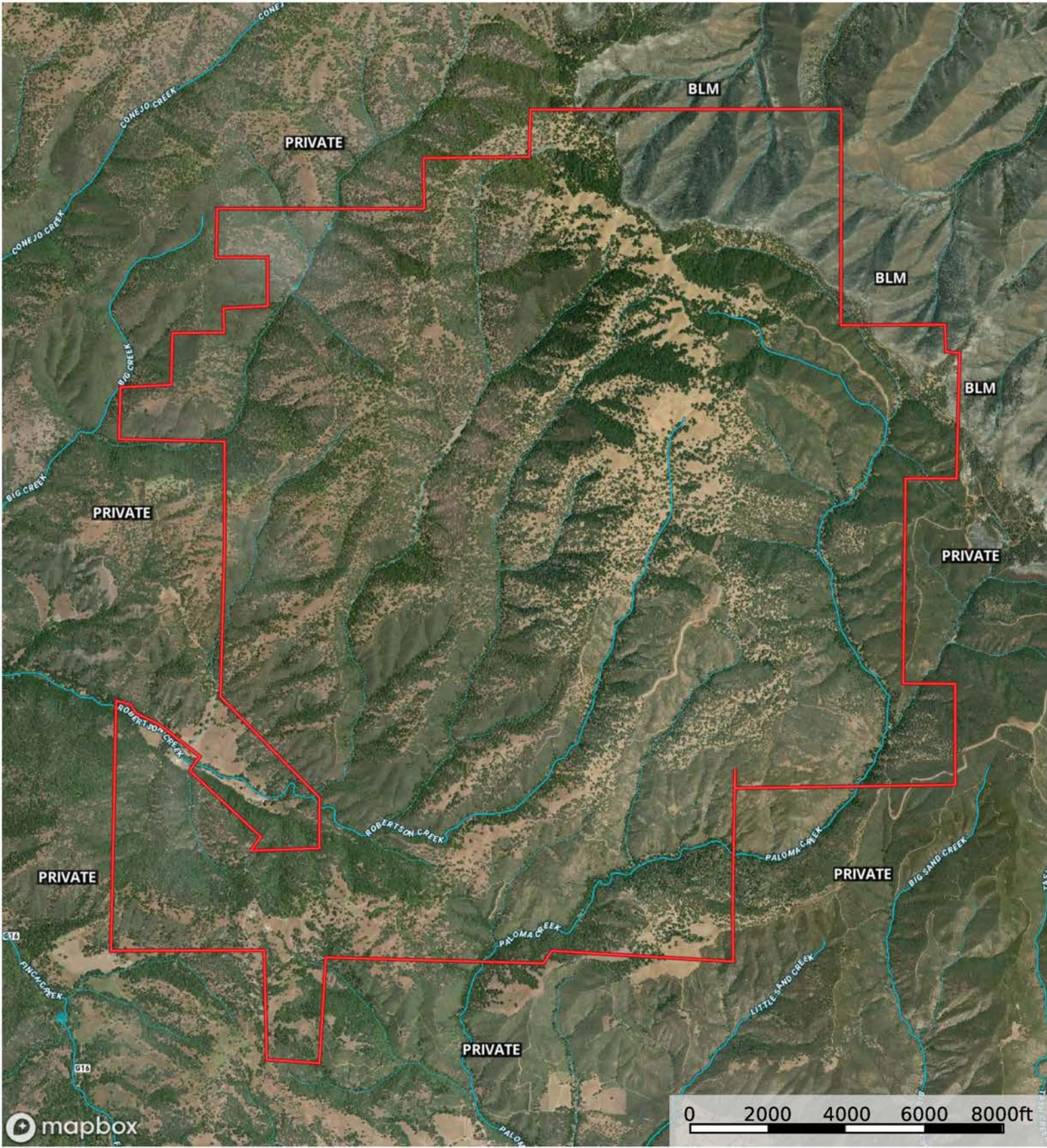


Boundary 2 1
11

Dennis Prins
P: 530-410-5755 denny@caoutdoorproperties.com

id. The information contained herein was obtained from sources deemed to be reliable. Land ID™ Services makes no warranties or guarantees as to the completeness or accuracy thereof.

Palo Escrito Ranch
Monterey County, California, 8 AC +/-



- Boundary
- Stream, Intermittent
- River/Creek
- Water Body

Donna Utterback
P: 530-604-0700

californiaoutdoorproperties.com

P.O. Box 535, Fall River Mills, CA.

The information contained herein was obtained from sources deemed to be reliable. Land id™ Services makes no warranties or guarantees as to the completeness or accuracy thereof.

Palo Escrito Ranch
Monterey County, California, 8 AC +/-





Donna Utterback
Real Estate Agent
CA BRE 01199200
530.604.0700



Denny Prins
Real Estate Agent
CA BRE 01989081
530.410.5755



California Outdoor Properties Inc.
707 Merchant Street, Suite 100
Vacaville, California 95688

California Outdoor Properties, Inc is pleased to have been selected as the Exclusive Agent for the seller of this offering. All information has been obtained from sources deemed reliable by California Outdoor Properties, Inc. however, the accuracy of this information is not guaranteed or warranted by either California Outdoor Properties, Inc., the sellers, and prospective buyers are charged with making and are expected to conduct their own independent investigation of the information contained herein. This offering is subject to prior sale, price change, correction or withdrawal without notice and any offer presented does not have to be accepted.