



## OUTDOOR PROPERTIES

FARMS | RANCHES | RECREATIONAL PROPERTIES | LAND | LUXURY ESTATES



# Sentinel Retreat

55 ± Acres | Siskiyou County, CA



707 Merchant Street | Suite 100 | Vacaville, CA 95688

707-455-4444 Office | 707-455-0455 Fax | [www.CaliforniaOutdoorProperties.com](http://www.CaliforniaOutdoorProperties.com)

DRE# 01838294



# Introduction

---

***Sentinel - a soldier or guard whose job is to stand and keep watch.***

*“Mount Shasta was in full view before me, in all its beauty and glory, as it reared its majestic head some seventeen thousand feet into the heavens, while its sides were covered with the deep-driven snow of ages, adding so much antiquity to the inspiring awe, as if to say, ‘I am the mighty monarch and sentinel of this western coast.’”*

- James Hutchings, **California Pioneer**

Perched at 4,000 ft. elevation in the midst of pines, oaks, and dogwoods, encompassing 55 acres with commanding views of majestic Mt. Shasta and picturesque Lake Siskiyou you will discover, Sentinel Retreat.

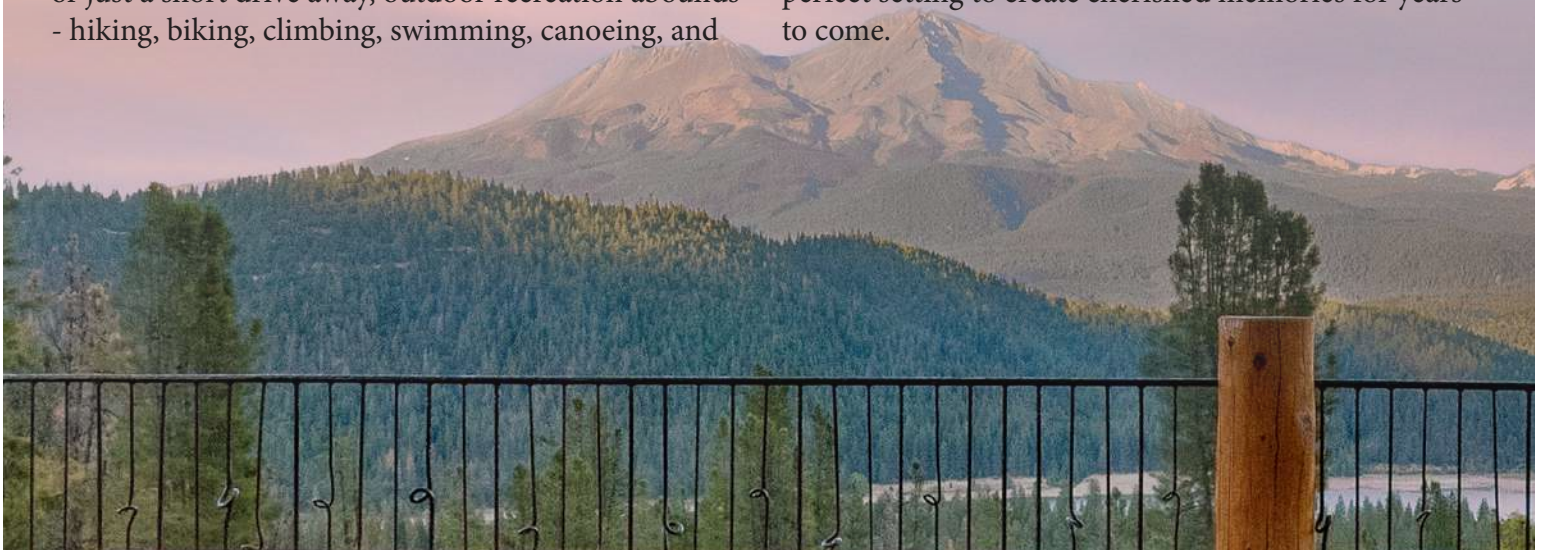
Located just 10 minutes from downtown Mt. Shasta, this remarkable estate presents an exceptional opportunity to own a custom-built luxury Pioneer Log Home. Boasting an expansive 7,600 square feet of living space and 1,000 square feet of guest quarters above the garage, coupled with a 1,700 square foot outdoor deck, this log home offers a harmonious blend of rustic elegance and mountain casual luxury. With three levels, four spacious bedrooms, three full bathrooms, and one-half bath, there is ample room to accommodate family, friends, and guests. There is a great deal of craftsmanship to be seen throughout the home. Whether it's the meticulously hand-carved mighty eagle above the front door or the wooden bears climbing the 20-foot “feature tree” that greets you as you enter Sentinel Retreat, no details are spared.

No matter the season, right outside your front door or just a short drive away, outdoor recreation abounds - hiking, biking, climbing, swimming, canoeing, and

kayaking. Try your luck casting your rod in the world-class Upper Sacramento or McCloud rivers or in the many surrounding mountain lakes. For the golf pros, you'll have plenty of options to work on your long and short game with nearby Mount Shasta Resort's 18-hole course and an abundance of golf courses in McCloud, Lake Shastina, Weed, and Fall River Mills. In the winter months, you can snowmobile or carve up the mountainside skiing/snowboarding with Mt. Shasta Board and Ski Park and Resort being only a quick 20 minute drive away.

After a full day of outdoor recreation, retreat to the 1,700 square foot deck to enjoy your favorite cocktail or glass of wine while BBQing and watching the sunset. When the sun goes down, head to the outdoor fire pit only steps away from the deck to roast the perfect s'more, share campfire stories, and stargaze. Or perhaps you prefer to wind down the night by soothing your body soaking in the hot tub while listening to the abundant wildlife come alive at night.

Whether you're yearning for a private spacious getaway or an entertainer's delight, Sentinel Retreat provides the perfect setting to create cherished memories for years to come.



# Highlights

- Gated entryway with 1/2 mile of paved driveway
- Jaw-dropping views of Mount Shasta and Lake Siskiyou
- Incredible 7,600 square-foot luxury home
- Custom detail and craftsmanship shown throughout entire property
- 4 bedrooms and a loft with a bunkbed and padded sleeping area
- Additional 1,000 square-foot guest quarters above garage
- Made from Canadian Western Red Cedar Logs
- Beautiful stone and woodwork
- Views from almost every room
- **Main level:**
  - Great room with a 20 ft feature tree and two story fireplace
  - Large Kitchen area with Wolf Stove range and counter seating
  - Dining area
  - Office
  - Laundry room
  - Master bedroom: vaulted ceiling, stove fireplace, en-suite bathroom, soaking tub, walk-in closet, sliding doors to outside deck
- **Second floor:**
  - Loft area: living room/seating area and bunkbed and padded sleeping area
- **Bottom First Floor:**
  - Kitchenette area
  - Living room with rock fireplace
  - Two master suites each with own bathroom and patio
  - One additional bedroom
- 1,700 square foot deck with gas BBQ, log picnic table
- Covered gazebo with hot tub
- Rock fire pit area
- Nearby outstanding outdoor recreational opportunities
- Fishing, hunting, horseback riding, hiking, boating, rafting, golfing
- 5 minutes from Lake Siskiyou
- 7 minutes from Mount Shasta Resorts 18 hole golf course
- 10 minutes from downtown Mount Shasta
- 20 minutes from Mount Shasta Ski Park



# The Log Home



As you enter the property you are greeted by a beautiful gated entryway. There is a 1/2 mile paved driveway that leads you to the impeccable lodge. The 7,600-square-foot lodge was built to embody a rustic elegance that is clearly displayed throughout this home. The home is made from Canadian Western Red Cedar logs, some of which are the largest logs provided by Pioneer Log Homes. Several of these logs are 3 feet in diameter. Passion and detail are evident in the work that was put into this house. **Fun fact:** The home was featured on Destination America's Channels Epic log home series and HGTV Carver Kings series!



# The Log Home: Main Level

A Norwegian handcrafted door welcomes you into the home. The natural stone and wood theme throughout the home immediately catches your attention. The main level consists of an open floor plan with a great room, a large, spread-out kitchen, office space, a laundry room, a conversation nook, a master bedroom, and a loft area. The kitchen is spacious. There are granite counters, a butcher block island on one side, and a wolf stove range and bar seating on the other. Right next to the kitchen, tucked away in the corner is the conversation nook with a stone fireplace. The great room features a 20 ft tall feature tree in the center of the living room, a two-story native rock fireplace, and of course, picture-perfect views. The fireplace mantel is from a local quarry weighing 1,400 lbs.



# The Log Home: Loft & Master Bedroom

The loft features a seating area as you walk up the stairs and a log bunk bed and padded sitting/sleeping area tucked away in the back.



The master suite is located on the entry-level. The large, vaulted ceiling room has sliding doors out to the porch and a stove fireplace. There is an en-suite bathroom with stone floors, a walk-in closet, a soaking tub, a glass stall shower, and granite countertops.



# The Log Home: Lower Level & Garage Living Area

As you enter down to the lower first level of the home, features include concrete flooring, a living room with a stone fireplace, a kitchenette, two large master suites each with their own private patios and bathrooms, and an additional smaller bedroom.



An additional 1,000-square-foot guest/living quarters is located above the garage. There is a kitchenette, spacious living room area, two bedrooms, and bathroom with a walk-in shower.







# The Log Home: Patio & Outdoor Areas



Outside is a 1,700-square-foot deck with a gas BBQ, log picnic table, and expansive, jaw-dropping views of Mt. Shasta and Lake Siskiyou below! What an excellent set-up for entertaining family and friends. Wind down in the hot tub in the covered gazebo or gather around the fire pit to share stories. Next to the grass area is a small shed and firewood storage.



# Recreation

---

The Sentinel Retreat is located minutes from popular attractions and recreational pursuits. With optimal four seasons, there are plenty of outdoor recreational activities to do year-round. There is world-class fishing on the Upper Sacramento and McCloud Rivers, fishing in mountain lakes, hiking, camping, horseback riding, hunting, rafting, canoeing, and more. Explore popular wilderness areas such as the Pacific Crest Trail or Castle Crags Wilderness & State Park. All in all, the convenience of returning to your well-appointed and comfortable luxury home after a long day of boating, hiking, or exploring the surrounding areas is unbeatable.

- *5 minutes from Lake Siskiyou*
- *7 minutes from Mount Shasta Resorts 18 hole golf course*
- *10 minutes from downtown Mount Shasta*
- *20 minutes from Mount Shasta Ski Park*



# Location



## About Mount Shasta, CA:

The city of Mount Shasta, nestled at the base of the iconic Mount Shasta, is a charming destination in Northern California. Surrounded by natural beauty, it offers a serene and picturesque setting. The city caters to outdoor enthusiasts, providing access to hiking trails, fishing spots, and camping areas near Mount Shasta Wilderness. Visitors use the city for popular trout fishing on the nearby Sacramento, McCloud, and Klamath rivers. It attracts visitors seeking adventure and connection with nature. The city itself has a small-town feel with friendly locals, cozy cafes, and unique shops selling local arts and crafts. According to the 2020 US Census, the city's population is 3,223.

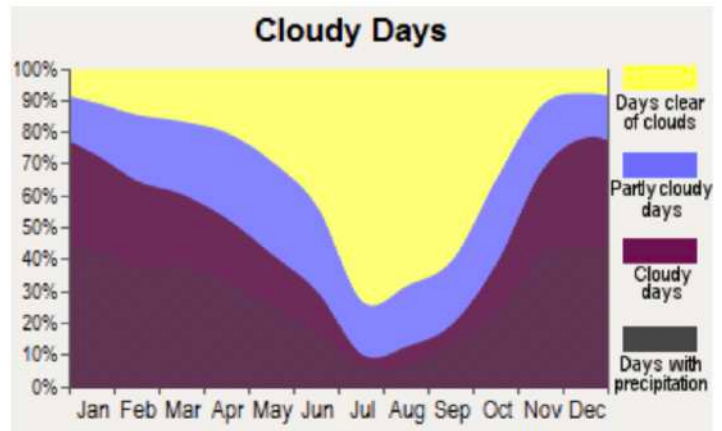
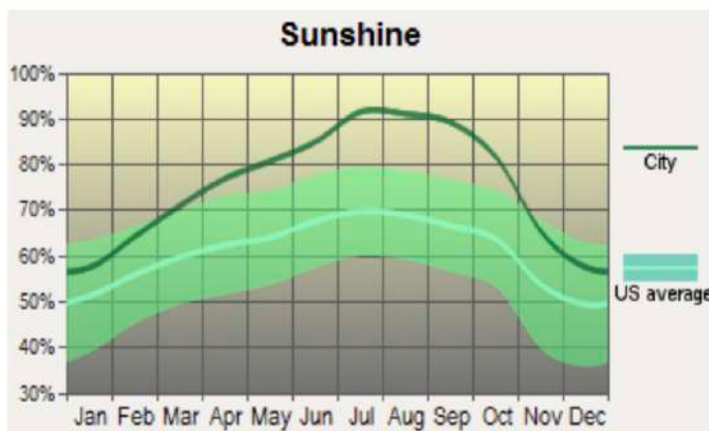
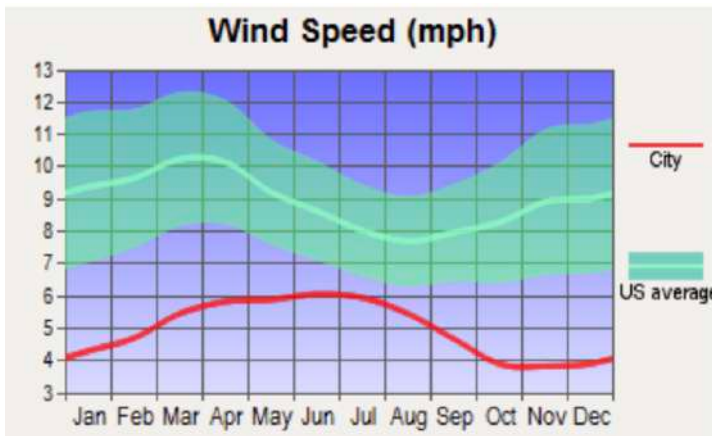
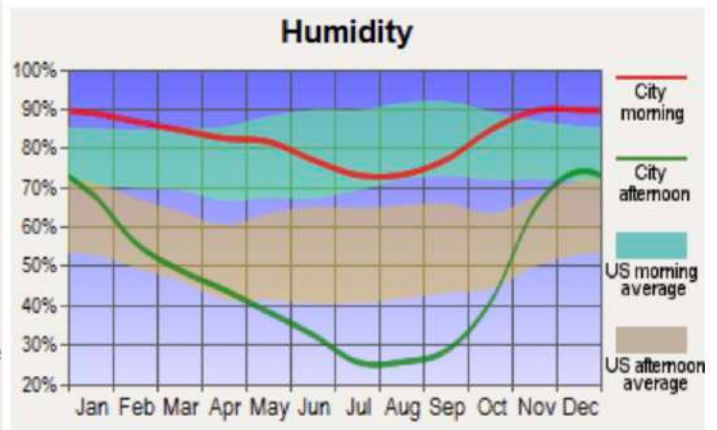
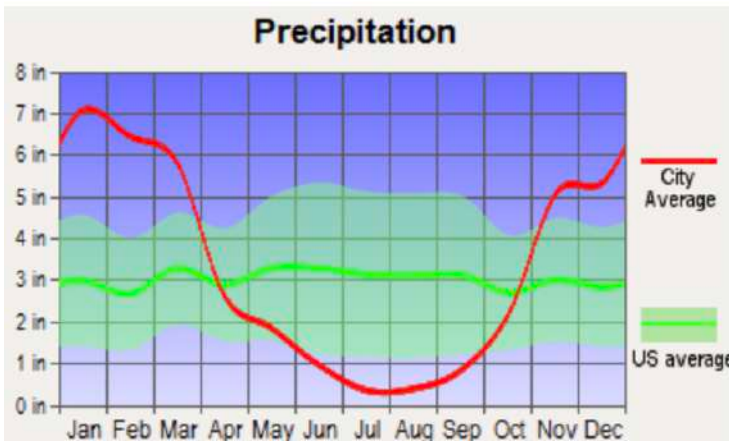
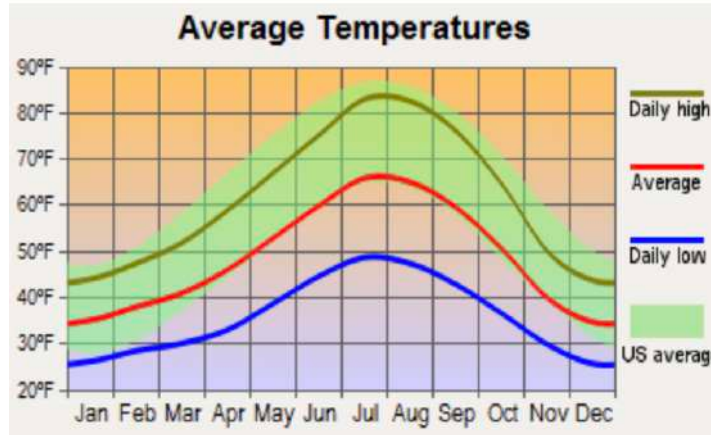
**Nearby airports:** *Local airports:* Weed Airport, which covered 344 acres and has one runway (16 mi). *Domestic airports:* Fall River Mills Airport, with a 5,000 ft asphalt runway, jet capable (59 mi), Redding Regional Airport (68 mi), and Medford Oregon Airport (92 mi) which is served by United, American, Delta, Allegiant and Avelo airlines. *Domestic/International:* Sacramento International Airport (210 mi).

## About Siskiyou County, CA:

Siskiyou County is located in the northernmost part of California and is the fifth-largest county in California by area. According to the US Census in 2010, the population was 44,900. Yreka is the county seat. The county is most known for its beautiful outdoor recreation, Mount Shasta, the McCloud River, and Gold Rush history. Siskiyou is the gateway to the Shasta-Trinity National Forests, Klamath National Forest, Modoc National Forest, Six Rivers National Forest, Lassen National Forest, and the famous Marble Mountain Wilderness Area. World-class fly fishing, rafting, and kayaking can be found on the Sacramento, Klamath, McCloud, Scott, Salmon, and Shasta Rivers. Ashland, Oregon's Shakespeare Festival is an hour north of the county. This county is an outdoorsman's dream with year-round activities such as hiking, camping, riding, biking, fishing, hunting, skiing, and more.



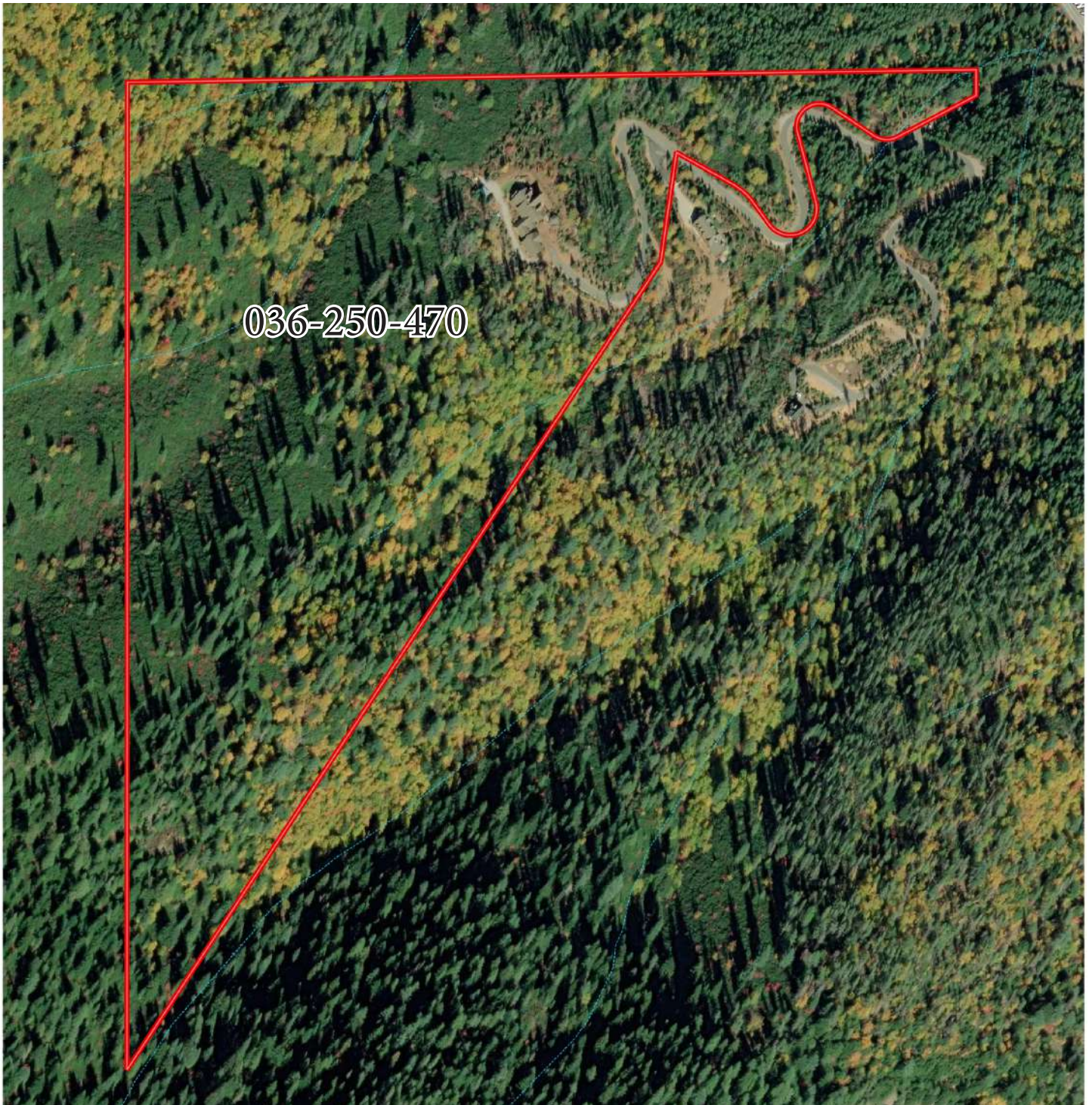
# Weather



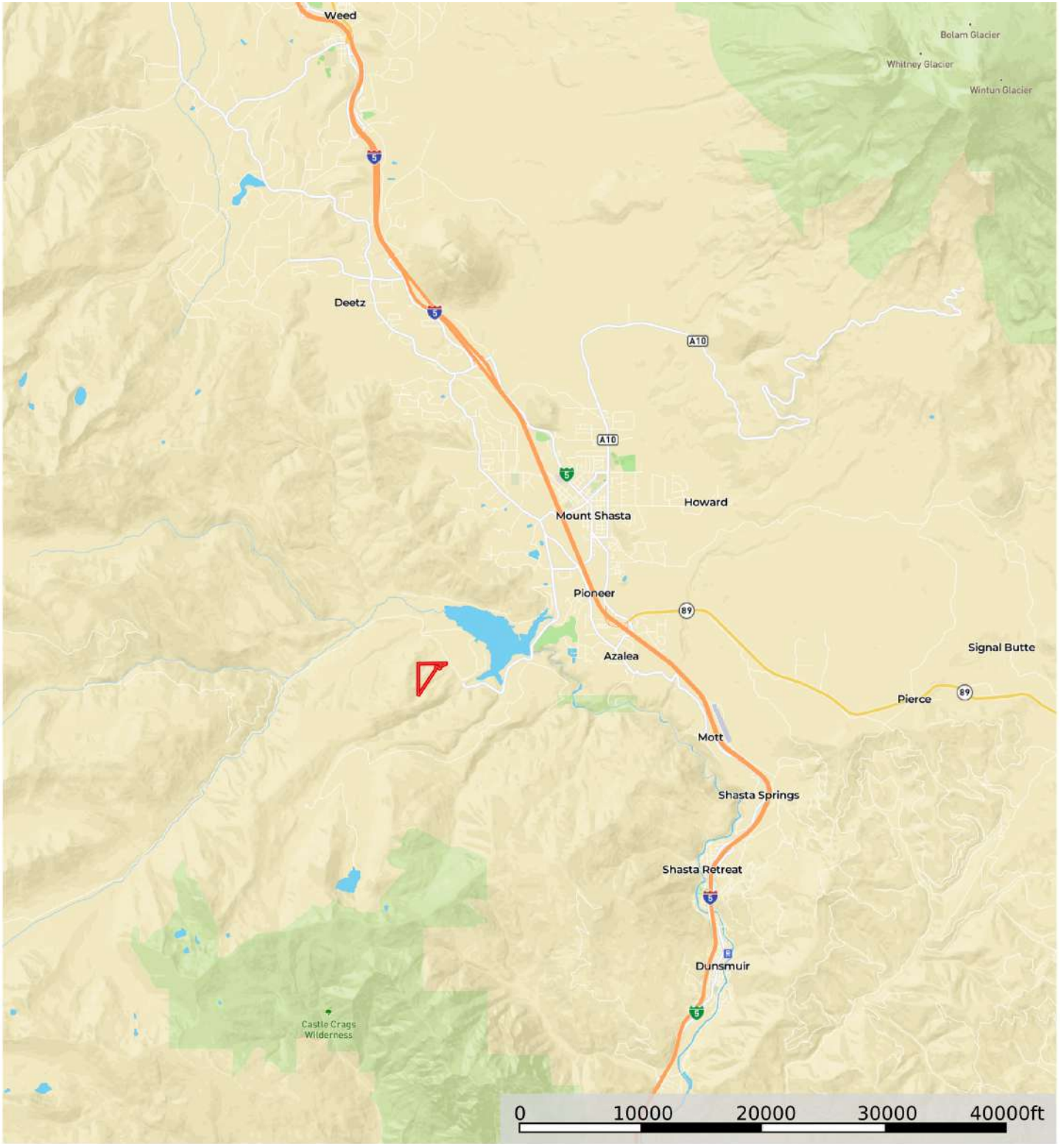
# Size & Zoning

The 55 ± acre Sentinel Retreat has one parcels and is zoned Residential (NEC). The total taxes for 2022 was \$16,568.

APN	ACREAGE	LAND USE	WILLIAMSON ACT	TAXES
036-250-470	55.04 acres	Residential (NEC)	No	\$16,568
<b>TOTAL</b>	<b>55.04 acres</b>			<b>\$16,568</b>

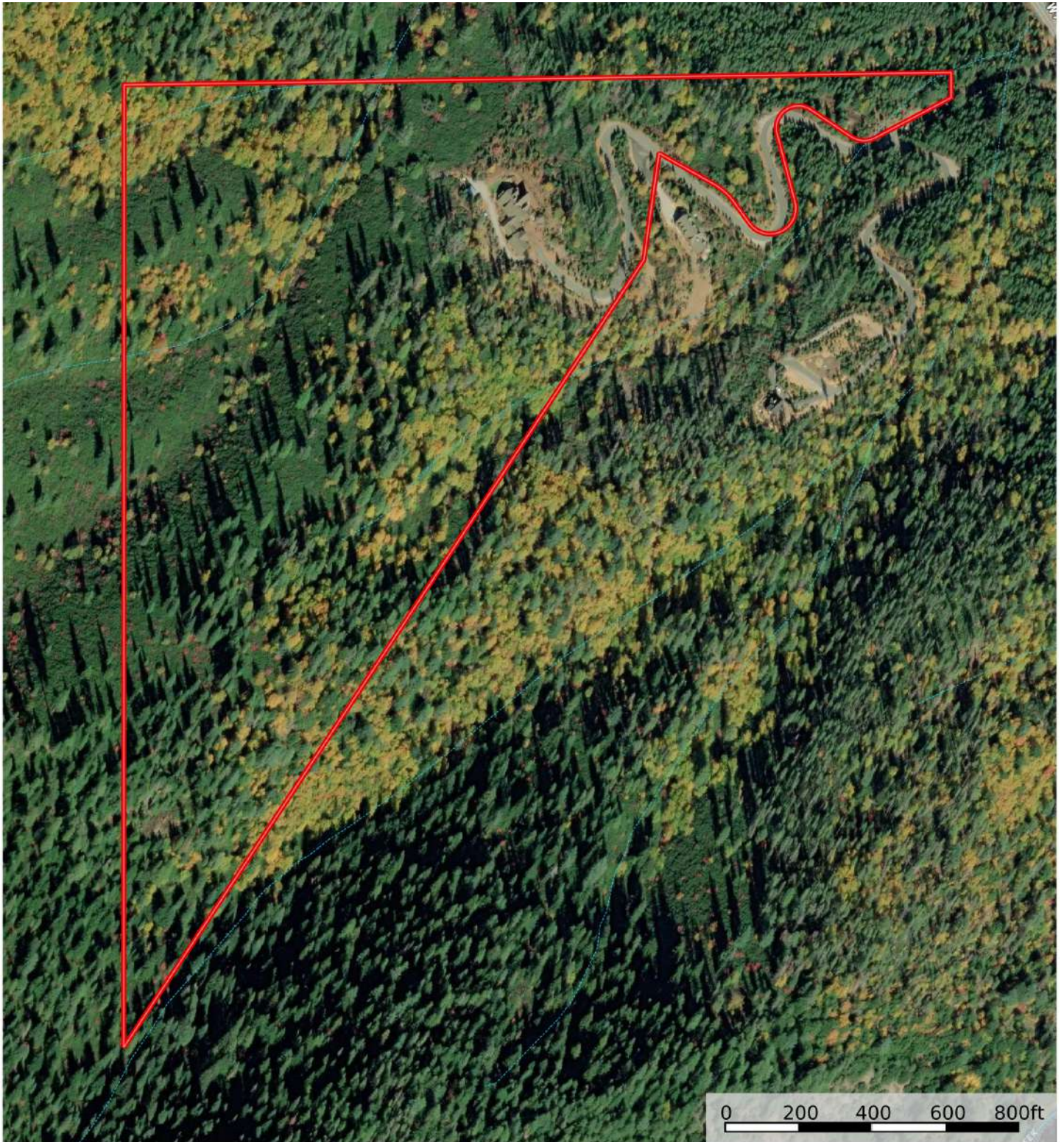


# Street Map



 Boundary

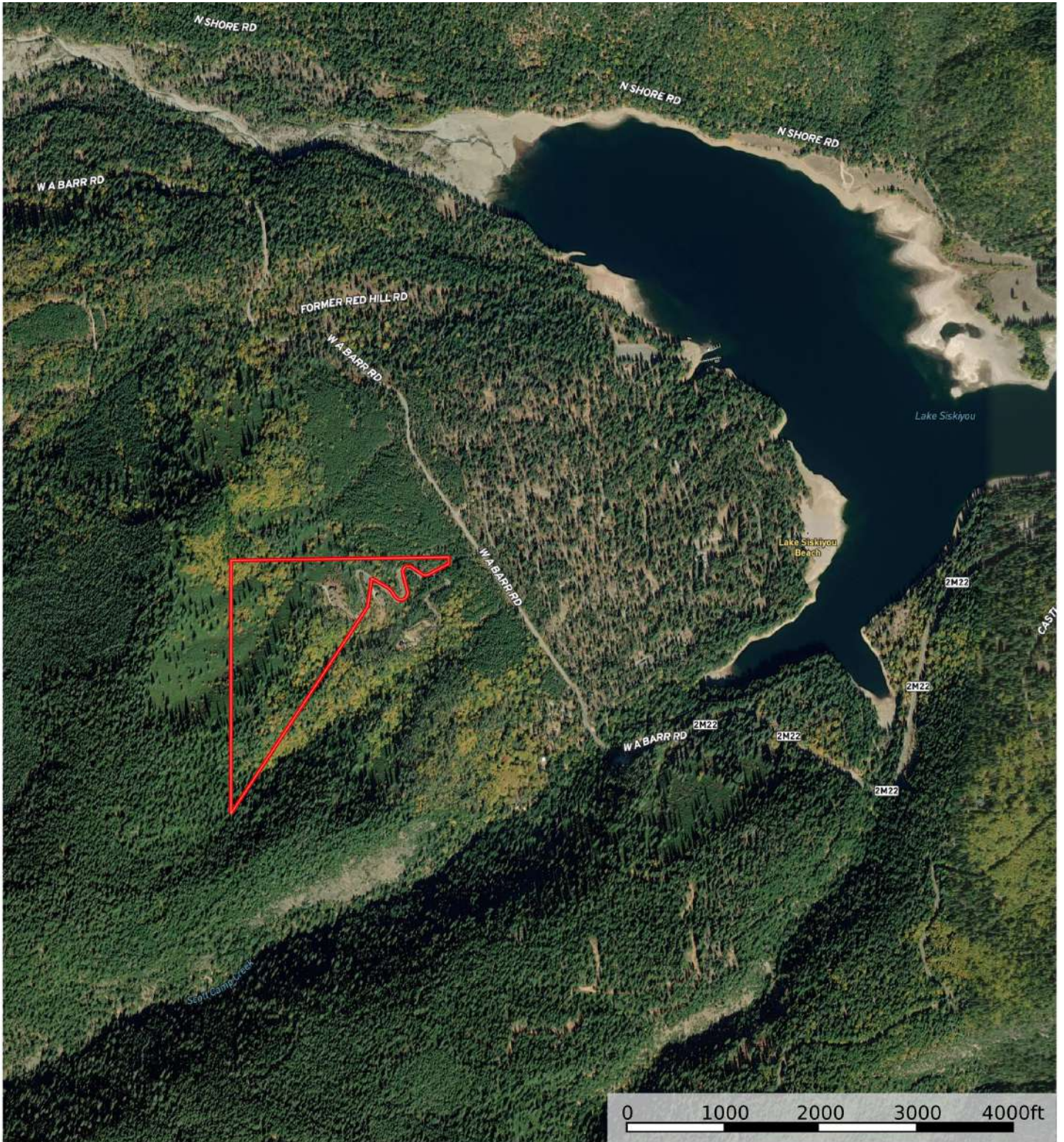
# MB Satellite Map



Boundary Stream, Intermittent River/Creek Water Body



# MB Satellite Map



 Boundary





California Outdoor Properties, Inc. is pleased to have been selected as the Exclusive Agent for the seller of this offering. All information has been obtained from sources deemed reliable by California Outdoor Properties, Inc. However, the accuracy of this information is not guaranteed or warranted by either California Outdoor Properties, Inc., or the sellers. Prospective buyers are charged with making and are expected to conduct their own independent investigation of the information contained herein. This offering is subject to prior sale, price change, correction or withdrawal without notice, and any offer presented does not have to be accepted.

**California Outdoor Properties Inc.**  
707 Merchant Street, Suite 100  
Vacaville, California 95688  
Office: (707) 455-4444 Fax: (707) 455-0455  
[www.CaliforniaOutdoorProperties.com](http://www.CaliforniaOutdoorProperties.com)



**LISTING AGENT:**

Todd Renfrew | (707) 455-4444  
[todd@caoutdoorproperties.com](mailto:todd@caoutdoorproperties.com)

EXCLUSIVE PARTNER OF

