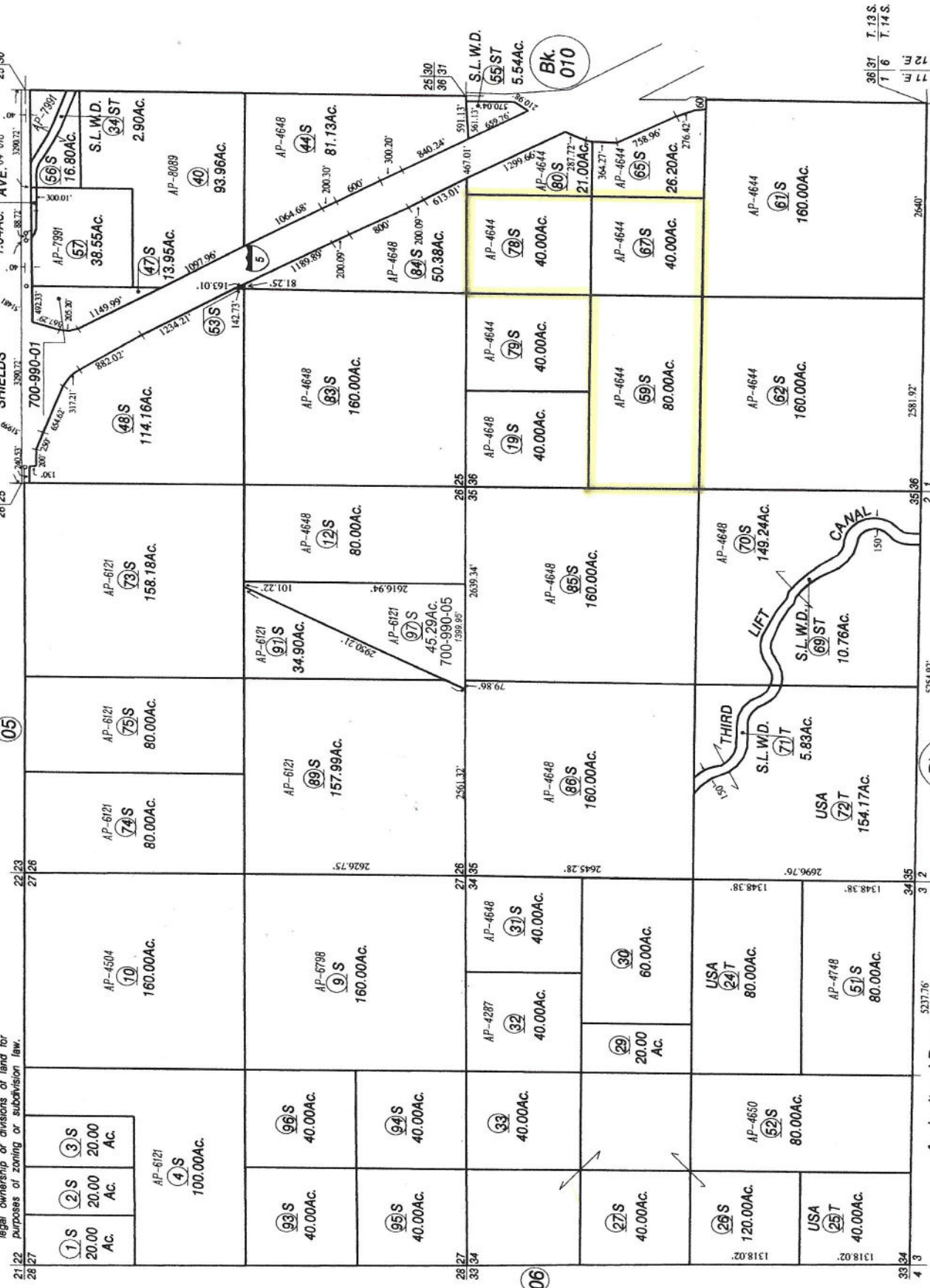


SEC'S 25, 26, 27, 34, 35, 36, T. 13 S., R. 11 E., M.D. B. & M. 009-07



NOTE ...
This map is for Assessment purposes only.
It is not to be construed as portraying
legal ownership or divisions of land for
purposes of zoning or subdivision law.



Assessor's Map Bk. 009 - Pg. 07
County of Fresno, Calif.

NOTE - Assessor's Block Numbers Shown in Ellipses.
Assessor's Parcel Numbers Shown in Circles.

Bk. 017

Agricultural Preserve