



FARMS | RANCHES | RECREATIONAL PROPERTIES | LAND | LUXURY ESTATES



# Ruby Mountain Ranch

3,197.54 ± Acres | Elko County, NV



707 Merchant Street | Suite 100 | Vacaville, CA 95688

707-455-4444 Office | 707-455-0455 Fax | [www.OutdoorPropertiesofNevada.com](http://www.OutdoorPropertiesofNevada.com)

DRE# 01838294

NV#B.1001686.CORP





# Introduction



Nestled in the heart of Nevada's Ruby Mountains, known as the Swiss Alps of Nevada, lies a rare opportunity to own a truly extraordinary property in Elko County, the Ruby Mountain Ranch. The ranch is conveniently located close to Elko, Lamoille, and Spring Creek. With its breathtaking beauty and diverse landscape, this ranch offers a remarkable experience for nature lovers and outdoor enthusiasts alike.

The bottom 900 ± deeded acres are situated at 5,600 ft. elevation and include a large meadow and sage, as well as Butterfield Creek. For those seeking a closer connection to modern conveniences, this portion of the property adjoins the desirable Spring Creek Development. This provides easy access to nearby amenities and services. The remaining 2,296 deeded acres of mountain land span an impressive 6,100 to 9,200 ft above sea level and adjoin the Humboldt National Forest, with multiple creeks and canyons.

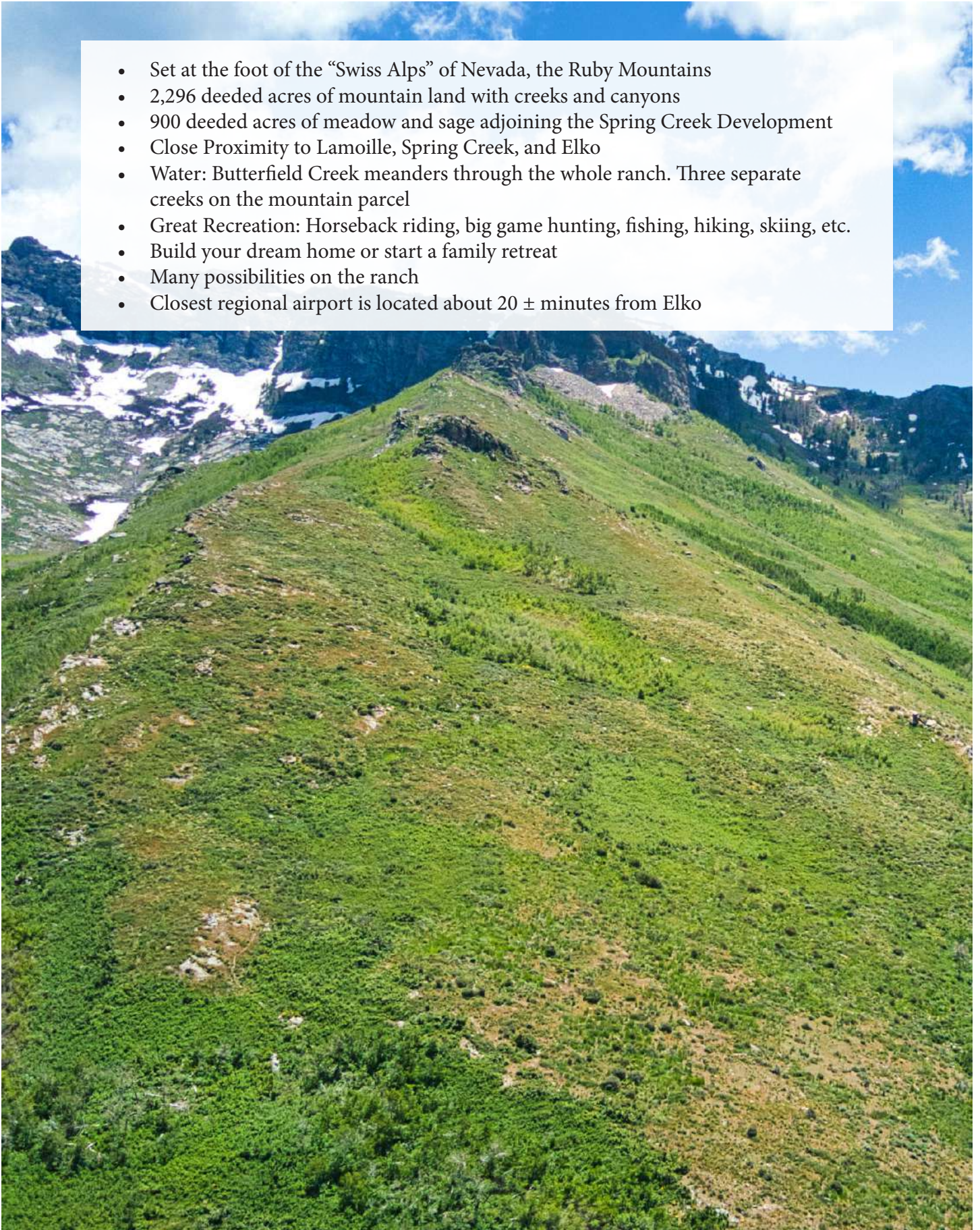
Living on a ranch is not just an address. It's a state of mind. A way of life that embraces nature's beauty and the freedom to explore its wonders. The great outdoors is in your backyard at Ruby Mountain Ranch! Horseback riding, big game hunting, hiking, skiing, and more. Ruby Mountain Ranch is an excellent opportunity for many ventures. Whether you envision building your dream home or creating a family retreat, this expansive piece of land offers ample space and flexibility to fulfill your aspirations. Don't miss this opportunity to own a slice of paradise in the Ruby Mountains.





# Highlights

- Set at the foot of the “Swiss Alps” of Nevada, the Ruby Mountains
- 2,296 deeded acres of mountain land with creeks and canyons
- 900 deeded acres of meadow and sage adjoining the Spring Creek Development
- Close Proximity to Lamoille, Spring Creek, and Elko
- Water: Butterfield Creek meanders through the whole ranch. Three separate creeks on the mountain parcel
- Great Recreation: Horseback riding, big game hunting, fishing, hiking, skiing, etc.
- Build your dream home or start a family retreat
- Many possibilities on the ranch
- Closest regional airport is located about 20 ± minutes from Elko





# Water

---



As you traverse the property, you will discover Butterfield Creek meandering through the entire ranch. Additionally, there are three other creeks on the mountainside section of the property. These creeks include Young Creek, Brennen Creek, and Ogilvie Creek.





# Recreation

---



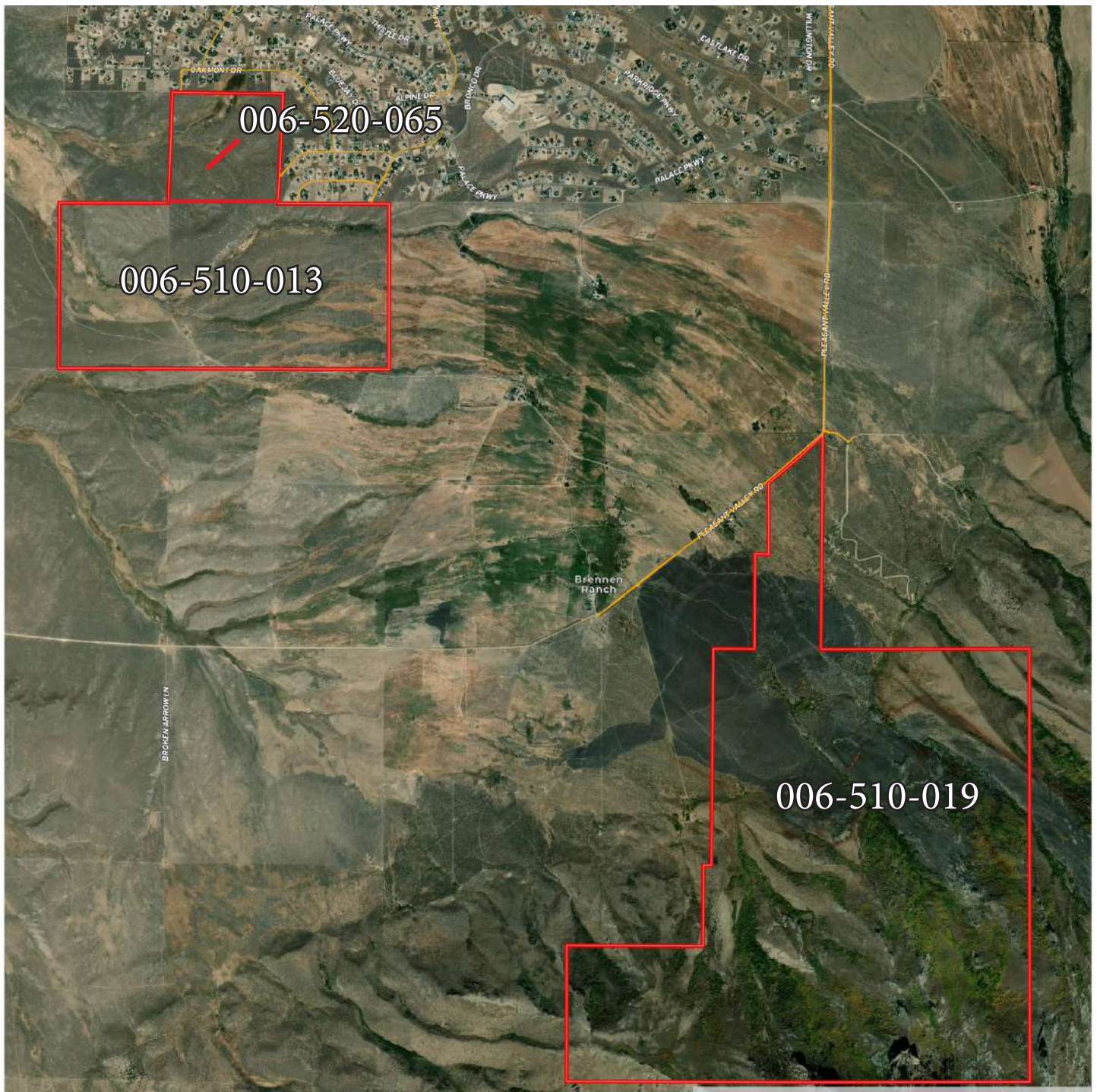
The recreational attributes of the ranch itself and the surrounding areas are excellent! The largest parcel adjoins the Humboldt National Forest. The great outdoors is in your backyard! From horseback riding, big game hunting, hiking, fishing skiing, and many more,. This area is a haven for exploration and recreation.





# Size & Zoning

APN	ACRES	LAND USE
006-510-013	741.32	Agricultural Land
006-520-065	160	Agricultural Land
006-510-019	2,296.22	Agricultural Land
<b>TOTAL</b>	<b>3,197.54</b>	





# Location

## About Spring Creek, NV:

Spring Creek is an independent city situated in northeastern Nevada in western United States. According to the 2010 US Census, the population was 12,361. It is located in a large valley between the Elko Hills and the Ruby Mountains. There are many outdoor activities such as exploring the Ruby Mountains, golfing at the Ruby View Golf Course, fishing in nearby rivers, creeks, and reservoirs such as South Fork Reservoir or Lamoille Creek. During the winter months, the Ruby Mountains transform into a snowy wonderland, offering opportunities for skiing, snowboarding, snowshoeing, or cross country skiing.

## About Lamoille, NV:

Lamoille, Nevada is a small rural incorporated community in Elko County. As of the 2020 US Census, the population was 276. It is about 19 miles southeast of Elko at the base of the Ruby Mountains. John Walker and Thomas Waterman first settled in the area in 1865. Lamoille is known as the gateway to the Ruby Mountains. It is an ideal base for exploration and adventure.



## About Elko, NV:

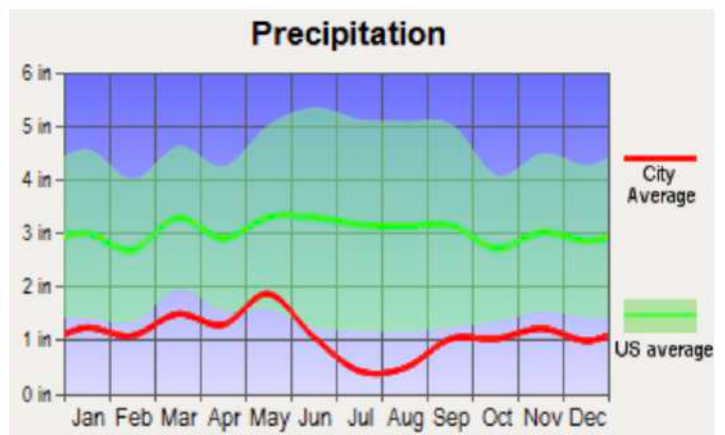
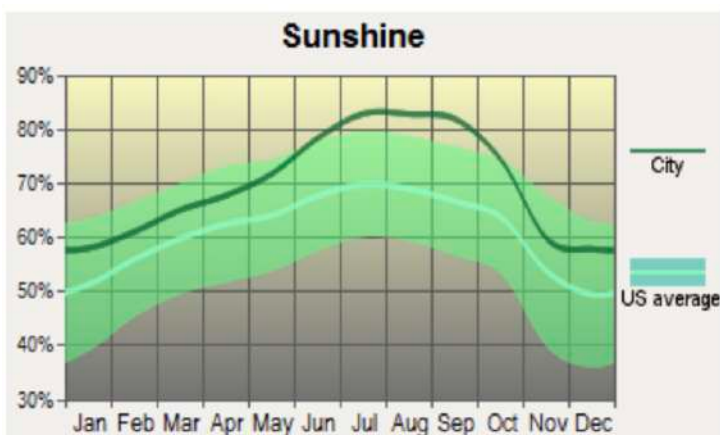
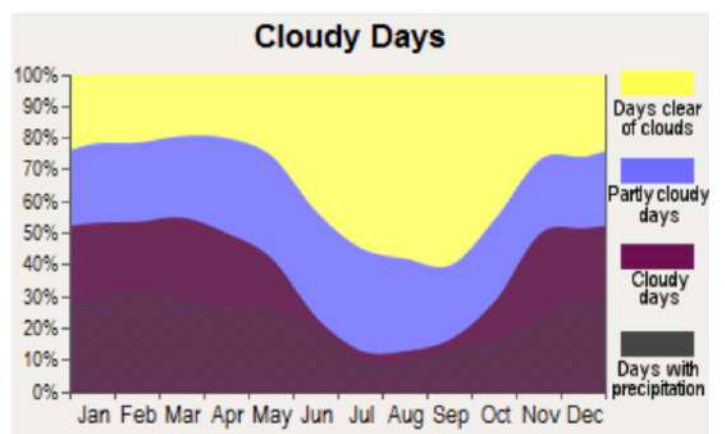
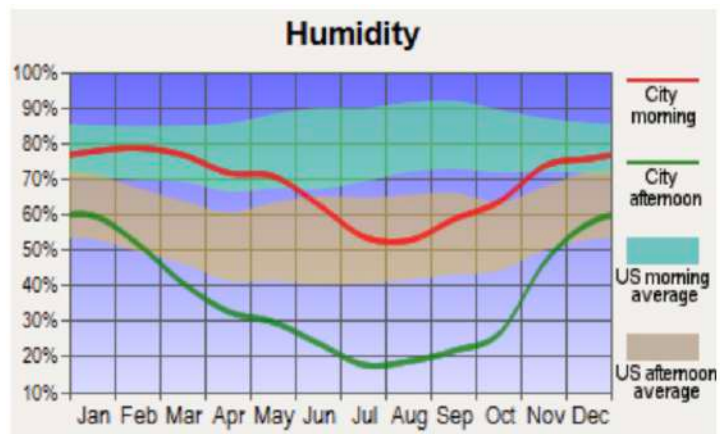
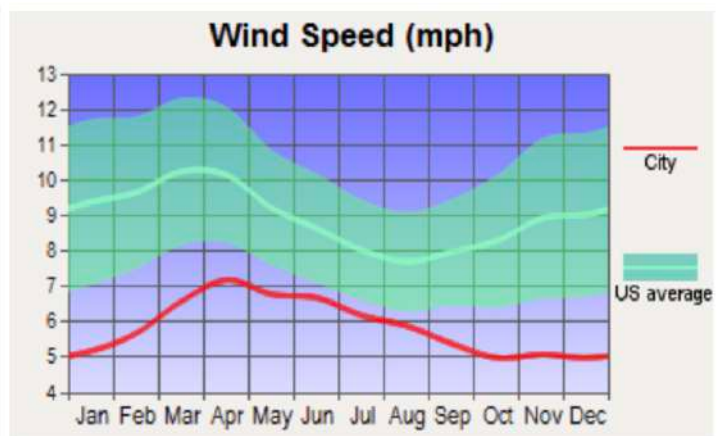
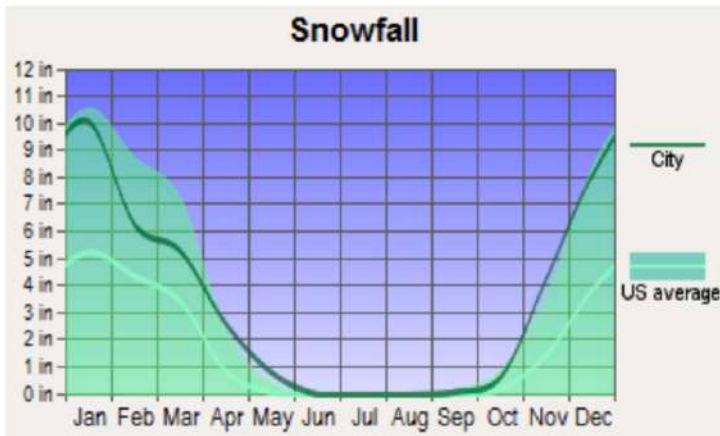
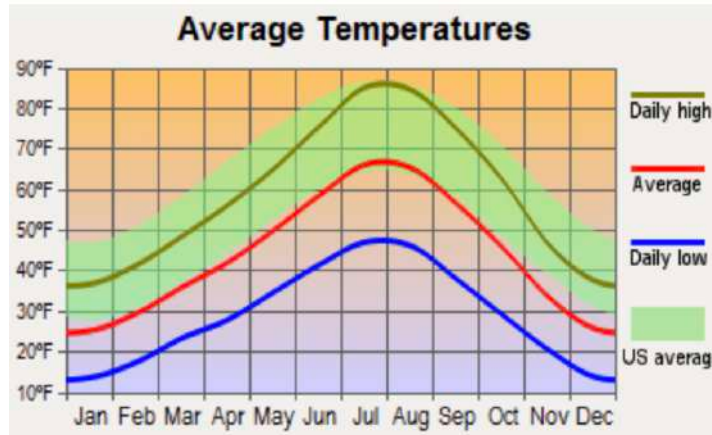
Elko, Nevada, is a thriving city located in northeastern Nevada's Elko County. Situated in the high desert region, Elko serves as a commercial, cultural, and recreational hub for the area. The city is renowned for its Western charm, with a vibrant cowboy culture and a strong connection to the mining industry. Visitors can explore the Western Folklife Center, attend the annual National Cowboy Poetry Gathering, or delve into the region's rich mining history at the Northeastern Nevada Museum. Surrounded by scenic landscapes, including the nearby Ruby Mountains, Elko offers opportunities for outdoor activities like hiking, fishing, and wildlife viewing. With its unique blend of Western heritage, natural beauty, and welcoming community, Elko provides a captivating experience for both residents and visitors.

## About Elko County:

Elko County, Nevada, located in the northeastern part of the state, is a vast and diverse region renowned for its rugged landscapes and rich history. Spanning over 17,000 square miles, the county offers a wide range of outdoor recreational activities, from hiking and camping to fishing and hunting. It is the fourth-largest county by area in the contiguous United States. It is one of the only 10 counties in the U.S. with more than 10,000 square miles of area. The area's Western heritage is celebrated through events like the National Cowboy Poetry Gathering, while its mining history is showcased in museums and historical sites. Elko County also boasts a strong Native American presence, with opportunities to learn about their culture and traditions. With its stunning natural beauty, cultural offerings, and abundant wildlife, Elko County is a captivating destination for those seeking to immerse themselves in the rugged charm of the American West. According to the 2020 US Census, the population was 53,702.

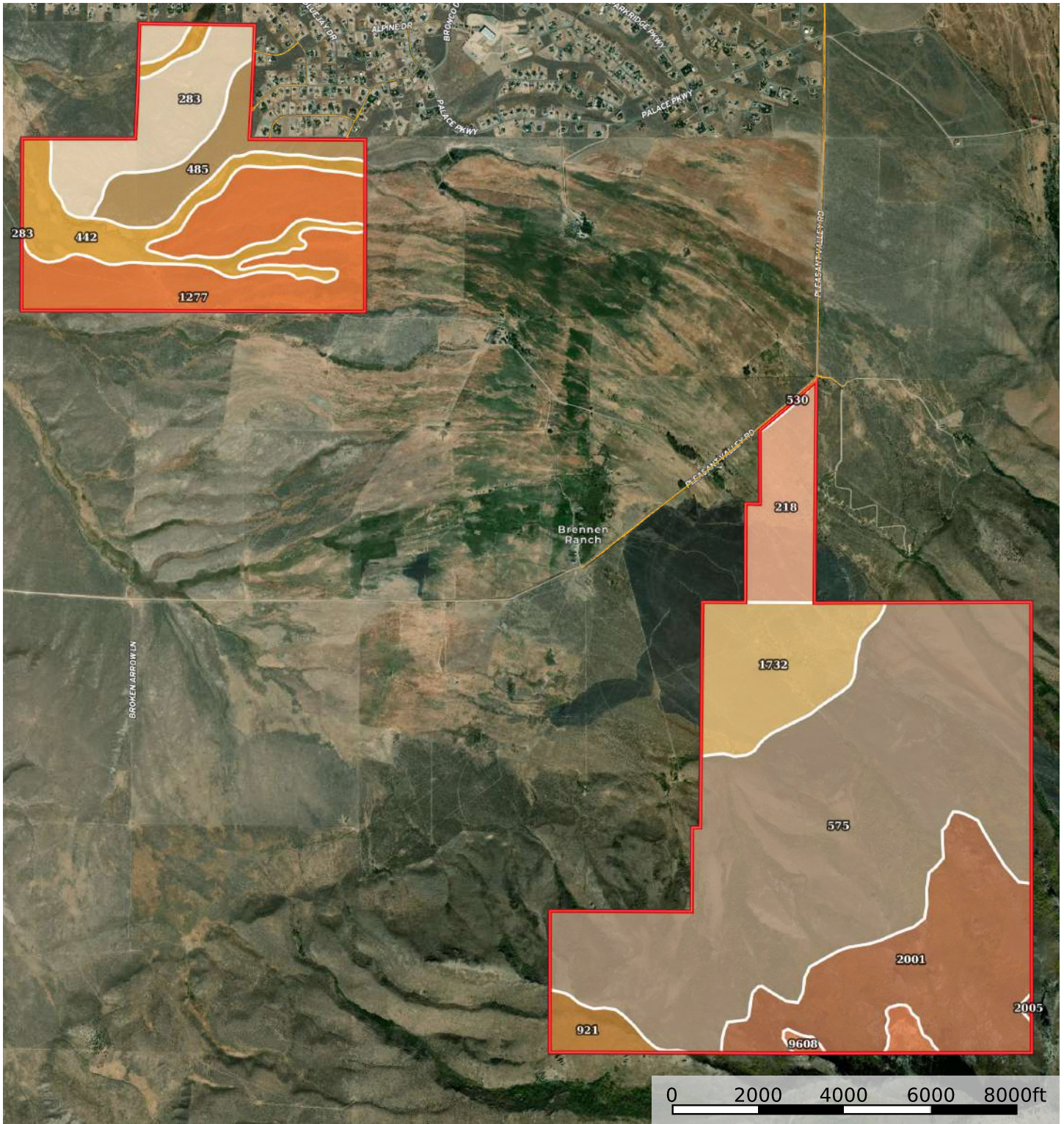


# Weather





# Soil Map

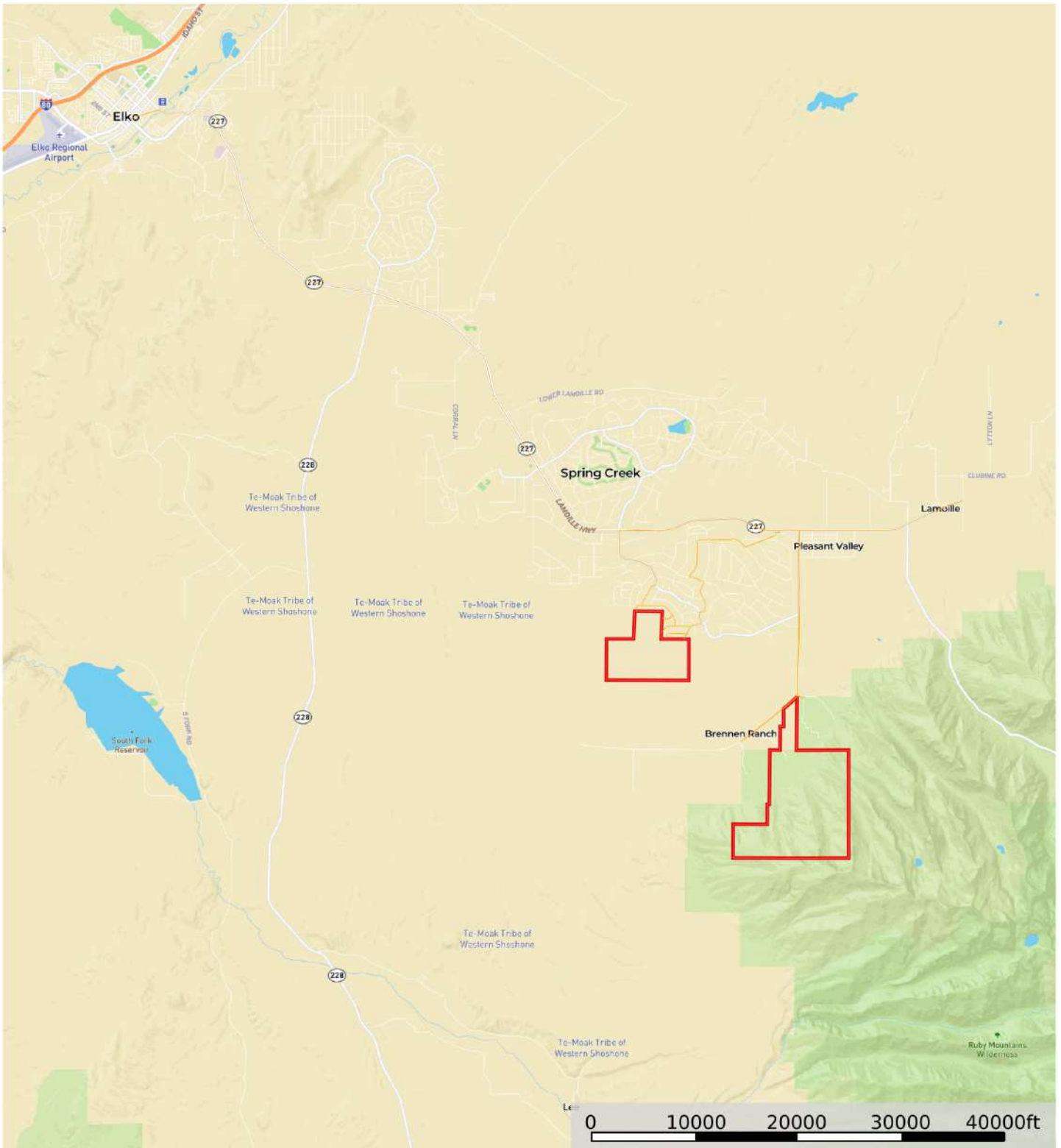


— Track      □ Boundary

*For a more in-depth soils report, please contact our office*

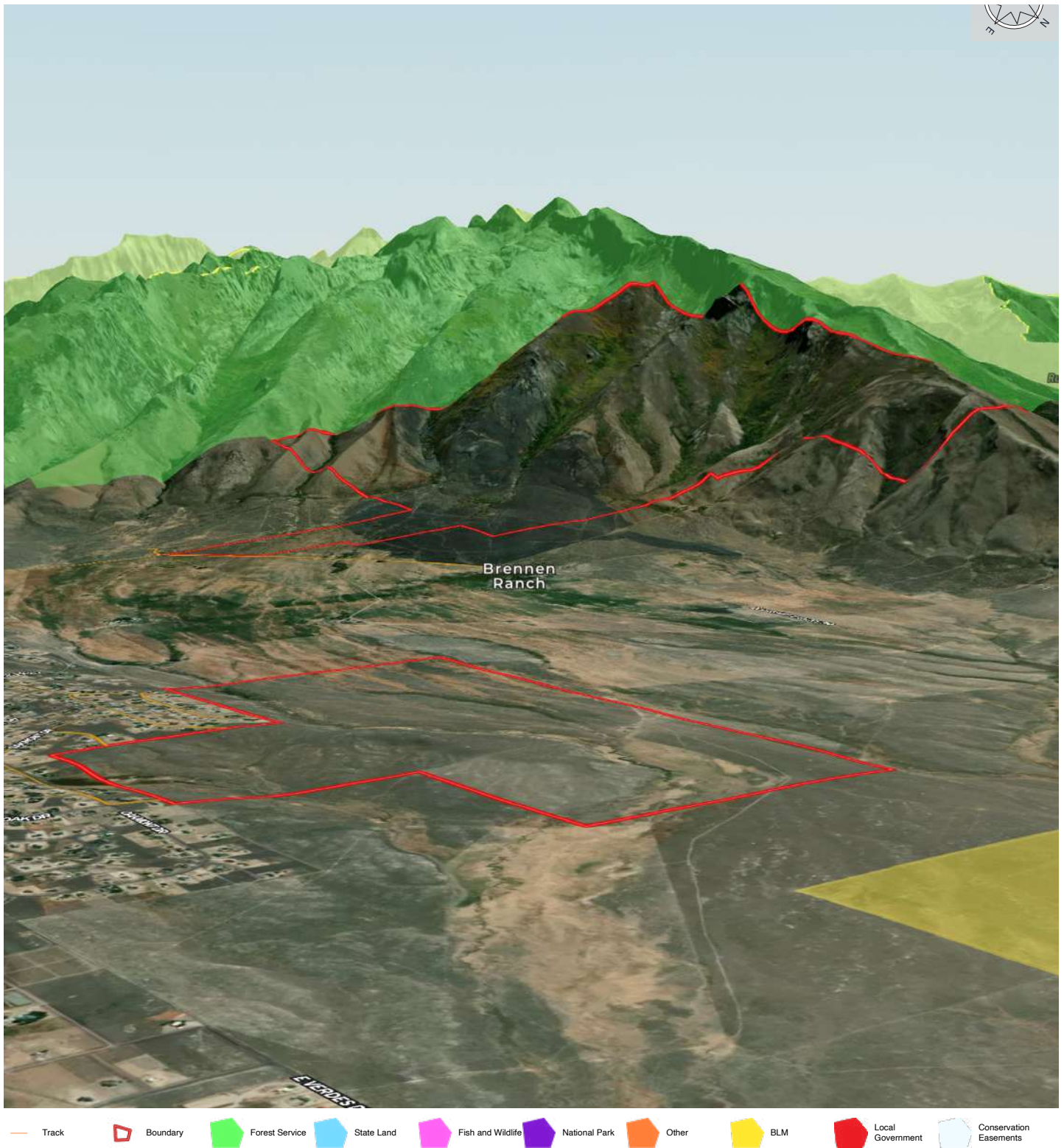


# Street Map



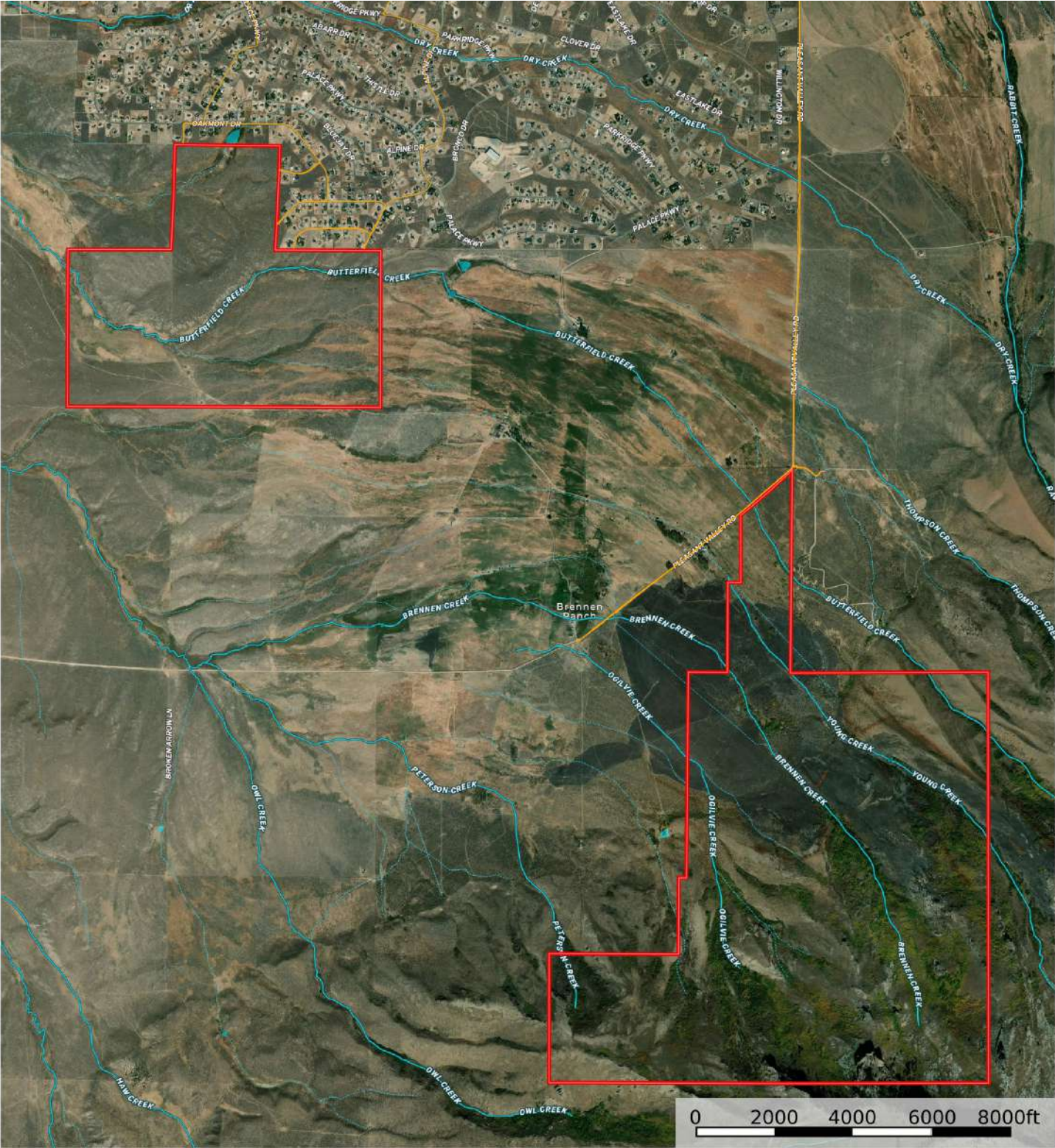


# 3D Map



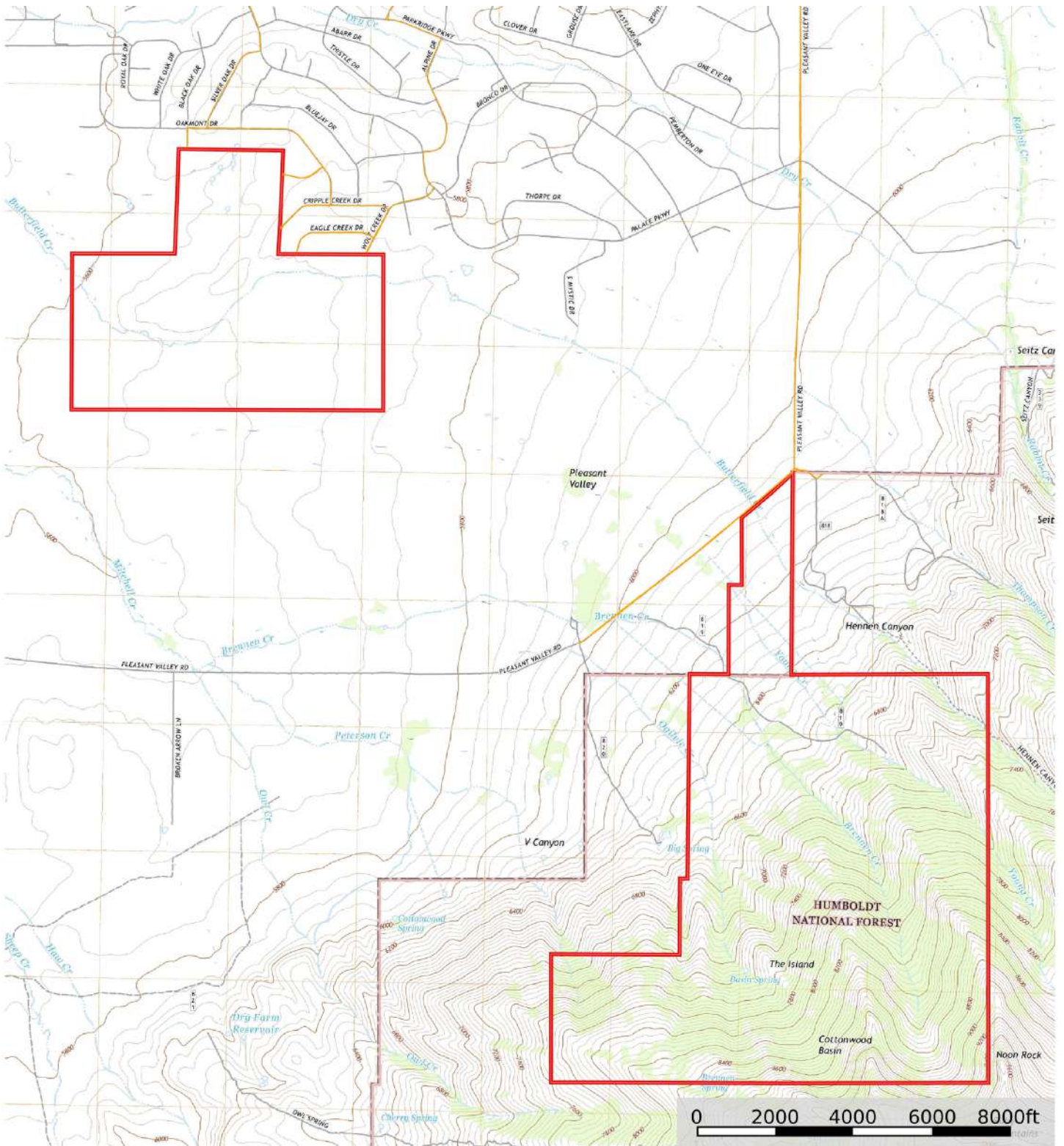


# MB Satellite Map





# Topo Map







**Outdoor Properties of Nevada, Inc. is pleased to have been selected as the Exclusive Agent for the seller of this offering. All information has been obtained from sources deemed reliable by California Outdoor Properties, Inc. However, the accuracy of this information is not guaranteed or warranted by either California Outdoor Properties, Inc., or the sellers. Prospective buyers are charged with making and are expected to conduct their own independent investigation of the information contained herein. This offering is subject to prior sale, price change, correction or withdrawal without notice, and any offer presented does not have to be accepted.**



**Outdoor Properties of Nevada Inc.  
707 Merchant Street, Suite 100  
Vacaville, California 95688  
Office: (707) 455-4444 Fax: (707) 455-0455  
[www.OutdoorPropertiesofNevada.com](http://www.OutdoorPropertiesofNevada.com)**

**Todd Renfrew | 707-455-4444  
[todd@caoutdoorproperties.com](mailto:todd@caoutdoorproperties.com)**

EXCLUSIVE PARTNER OF

