



California
OUTDOOR PROPERTIES

FARMS | RANCHES | RECREATIONAL PROPERTIES | LAND | LUXURY ESTATES



5800 Felter Road

179 +/- Acres | Santa Clara County, CA



707 Merchant Street | Suite 100 | Vacaville, CA 95688

707-455-4444 Office | 707-455-0455 Fax | www.CaliforniaOutdoorProperties.com

DRE# 01838294



Introduction



Enjoy your own private retreat! Set in the rural area, minutes from Milpitas California, this 179 +/- acre property includes a 3 bed, 2 bath home, tree house with loft, metal hoop garage, two ponds, and a year-round creek. Set atop a hill, the property has beautiful views of San Jose, rolling hills, and the Calaveras Reservoir. There is plenty of room to roam on open land that can be used for horseback riding, cattle, or livestock. Abundance of possibilities on your own 100+ acre ranch.

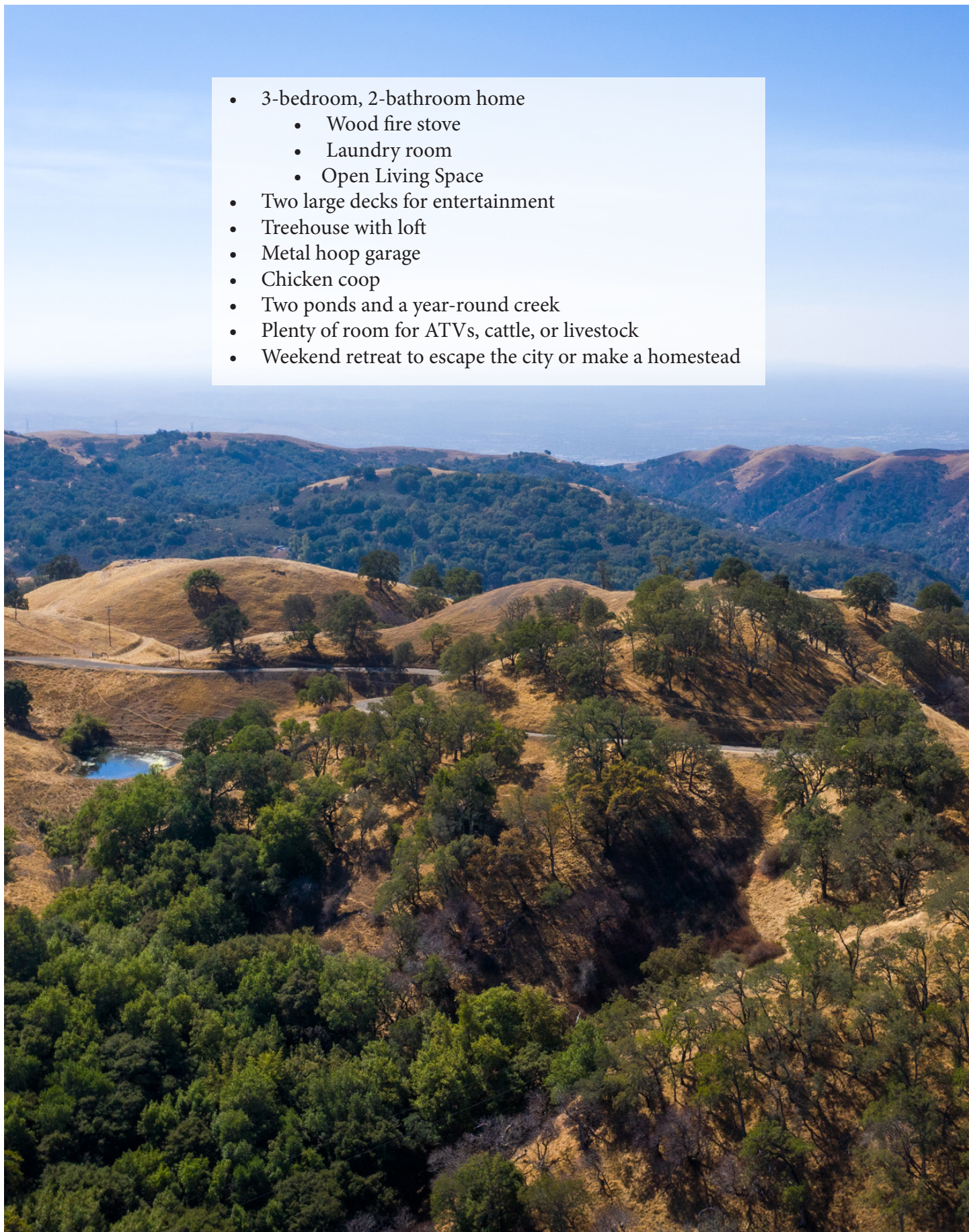


The property is located in Santa Clara County in the San Francisco Bay region, an area that is comprised of a total of nine counties bordering the San Francisco Bay. Air service is provided by Norman Y. Mineta San Jose International Airport, 17 miles from the property. Reid – Hillview of Santa Clara County Airport is located in San Jose, 18 miles from the property. The county's transportation network includes a number of expressways, which provide streamlined access to most interior locations.



Highlights

- 3-bedroom, 2-bathroom home
 - Wood fire stove
 - Laundry room
 - Open Living Space
- Two large decks for entertainment
- Treehouse with loft
- Metal hoop garage
- Chicken coop
- Two ponds and a year-round creek
- Plenty of room for ATVs, cattle, or livestock
- Weekend retreat to escape the city or make a homestead

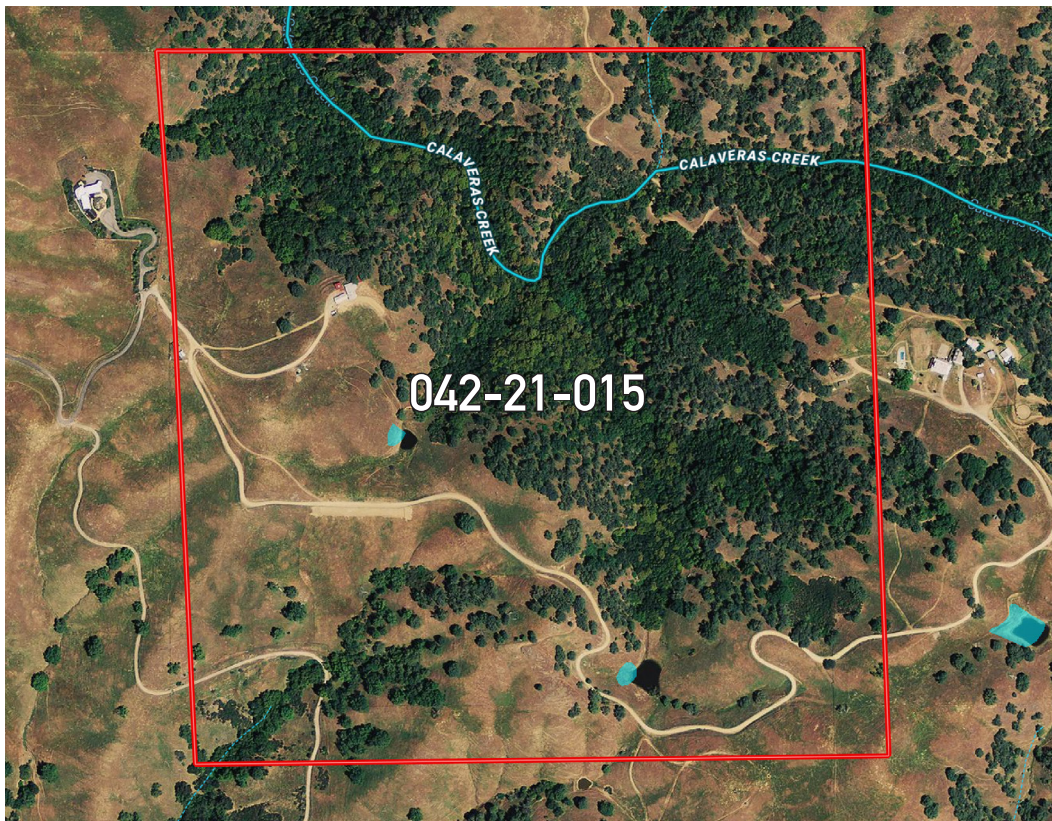


Size & Zoning



This 179 +/- acre ranch consists of one parcel.

| <u>APN:</u> | <u>Acres:</u> | <u>Zoning:</u> | <u>Property Taxes (2019)</u> |
|-------------|---------------|---------------------|------------------------------|
| 042-21-015 | 179.49 | AW/ Pasture Grazing | \$17,967 |





The main home is set upon the hill with views of the rolling hills, Calaveras Reservoir, and San Jose. There is a 3 bedroom and 2 bathroom home with an open living layout, wood fire stove, and laundry room. There is a large deck perfect for entertaining guests while enjoying the beautiful views.



Metal hoop garage and treehouse with loft and large deck space



Recreation



This property has plenty of room to roam. Bring your ATV's, horses, cattle, and any other livestock. There are two ponds and a year-round creek. Horseback riders and hikers can enjoy the 1,558-acre Ed R. Levin Park. Ed R. Levin park is very unique with its combination of traditional park features, fishing, play areas, etc and expansive trail system. Adjacent to the park is the 3,000-acre Mission Peak Regional Preserve which is popular for hang-gliding, R/C flying, biking, hiking, and horseback riding. New owners can enjoy the multitude of outdoor recreational opportunities whether it be on the property itself or in nearby parks.



Location



About San Jose, CA

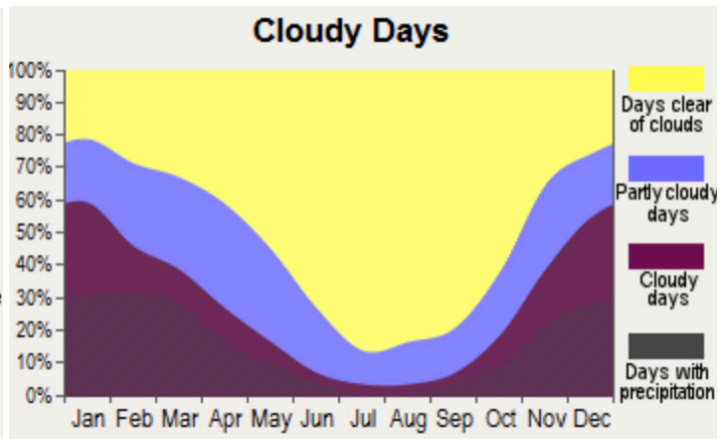
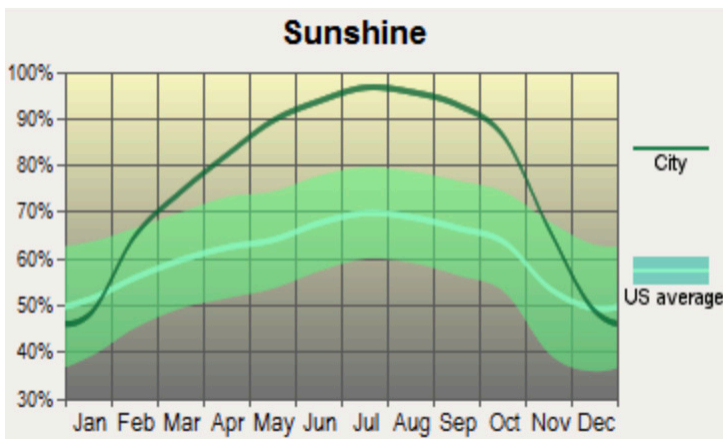
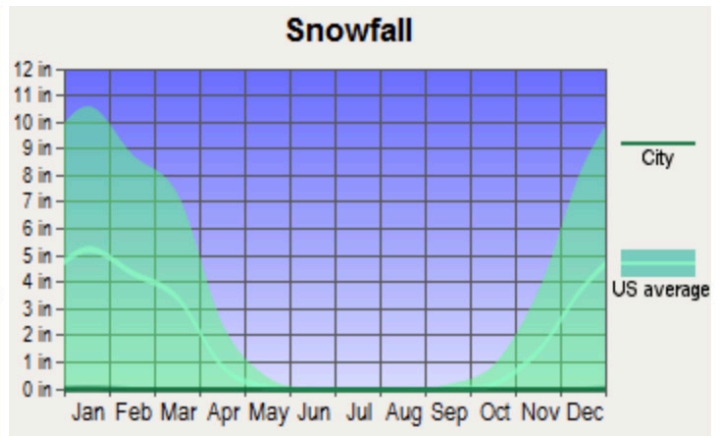
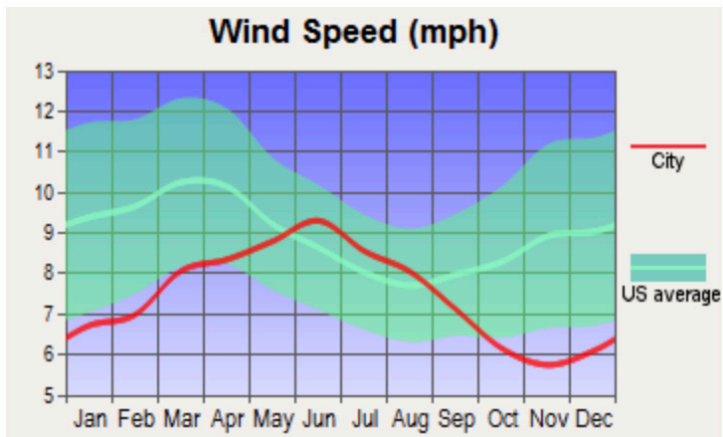
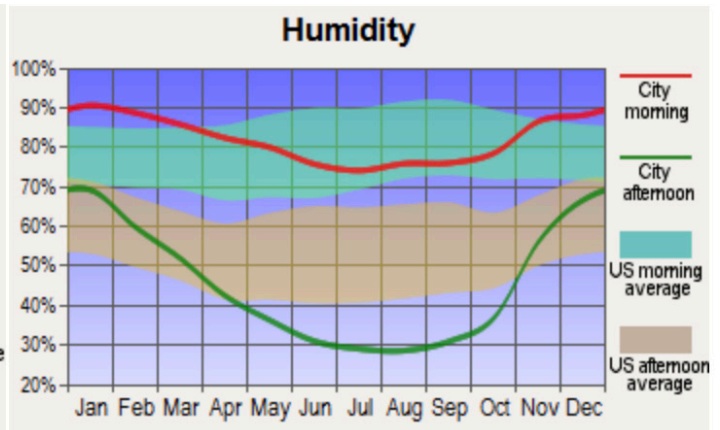
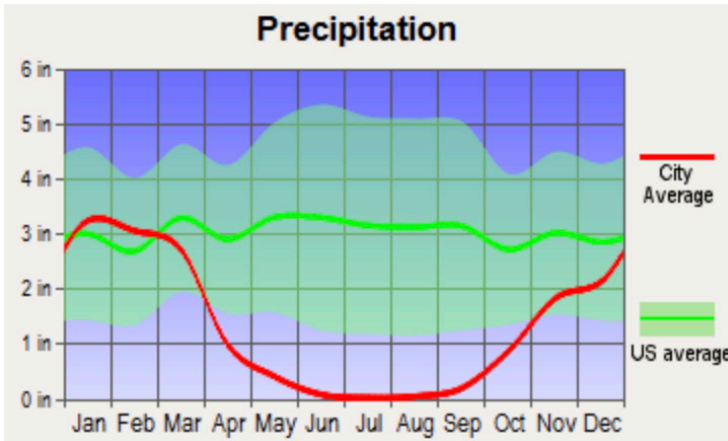
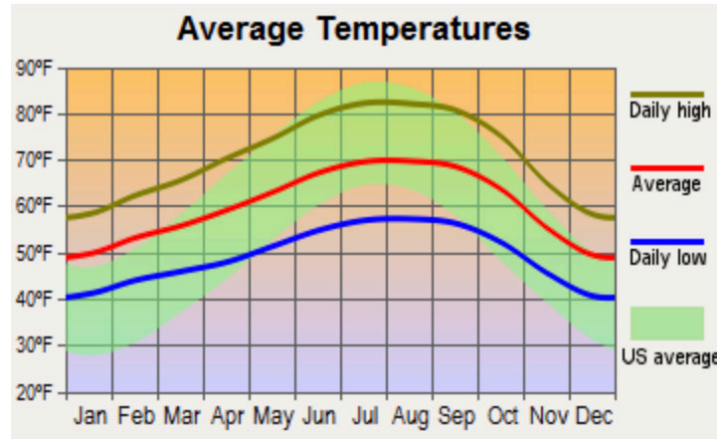
San Jose is the largest city in Northern California with an estimated population of 1,021,795 in 2019. It is the 3rd most populous city in California and 10th most populous city in the United States. San Jose is the county seat of Santa Clara County. It is known as one of the wealthier cities in the US as well as around the world. Being in the center of Silicon Valley, San Jose has some of the largest tech companies including Cisco Systems, PayPal, eBay, Adobe Inc., etc. With the big boom of tech and internet companies in San Jose and remaining Silicon Valley area, it makes it “California’s fastest-growing economy.” Expect homes to be in the median price range of \$1,085,000. There is easy access to three major airports within the Bay Area: San Jose International Airport, San Francisco International Airport, and Oakland International Airport, both SFO & OAK are within 30-45 minutes drive from San Jose.

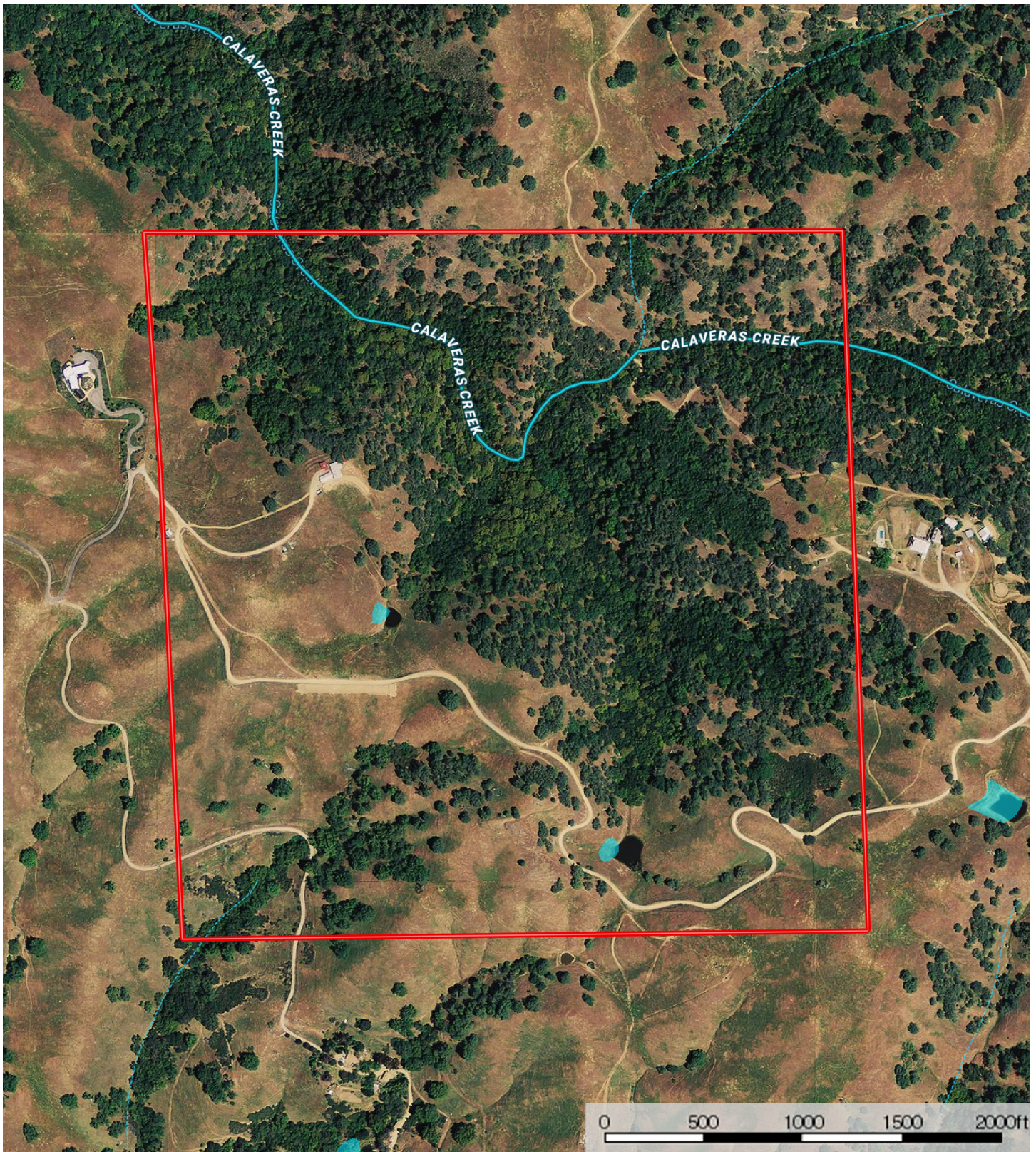
About Santa Clara County

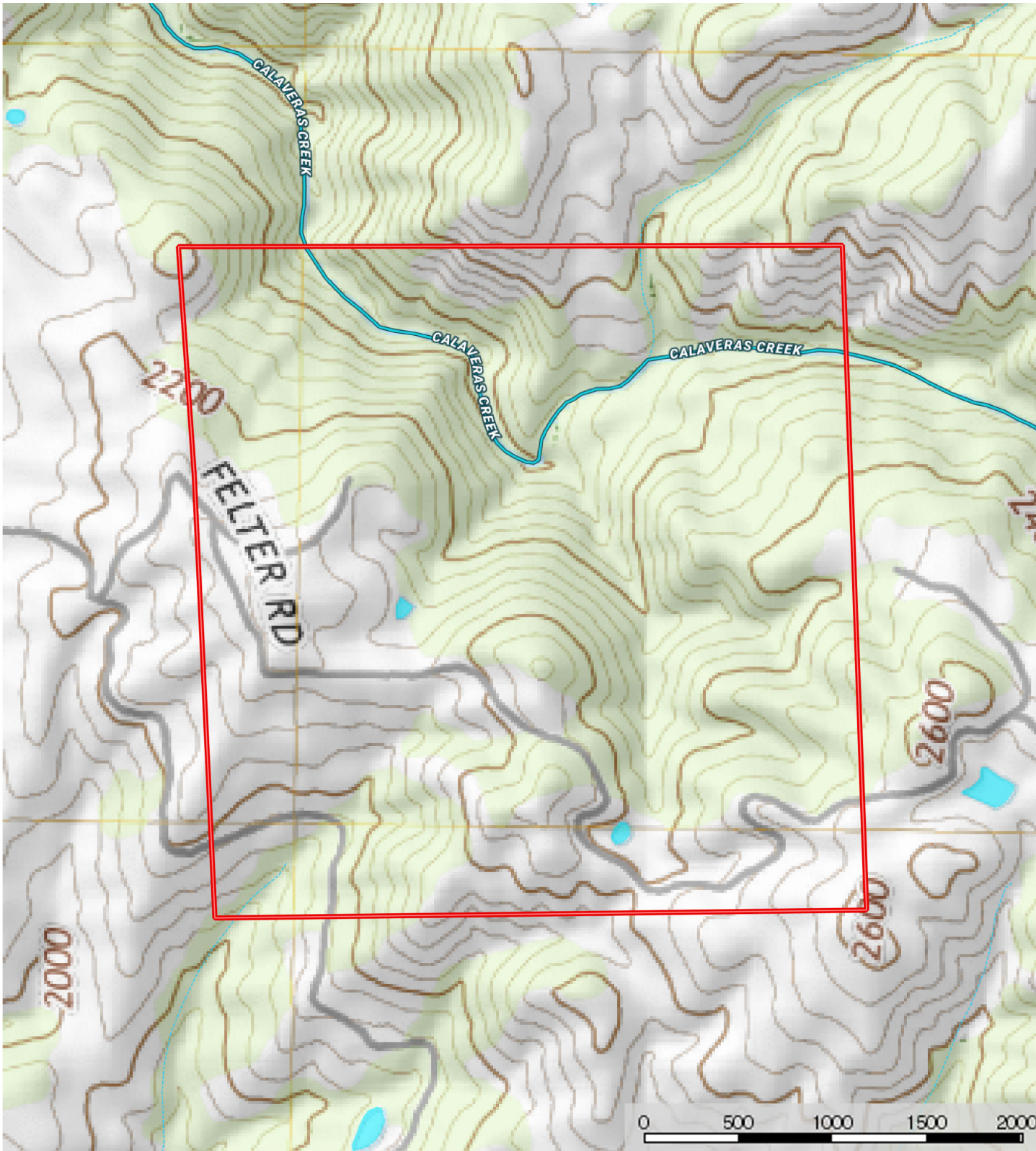
Santa Clara County is California’s 6th most populous county. According to the US Census, the population in 2010 was 1,781,642. The county seat and largest city is San Jose also known as the most populous city in the Bay Area. Santa Clara is home to Silicon Valley known as the “economic center for high technology” providing more than a quarter of jobs in the Bay Area. Santa Clara is known nationally as the most affluent places to live in the US. There are major universities in the county such as Stanford University, Santa Clara University, and San Jose State University. 28 parks in the county with hiking and biking trails, lakes, and streams for outdoor recreational pursuits.

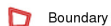


Weather











California Outdoor Properties, Inc is pleased to have been selected as the Exclusive Agent for the seller of this offering. All information has been obtained from sources deemed reliable by California Outdoor Properties, Inc. however, the accuracy of this information is not guaranteed or warranted by either California Outdoor Properties, Inc., the sellers, and prospective buyers are charged with making and are expected to conduct their own independent investigation of the information contained herein. This offering is subject to prior sale, price change, correction or withdrawal without notice and any offer presented does not have to be accepted.



California Outdoor Properties Inc.
707 Merchant Street, Suite 100
Vacaville, California 95688
(707) 455-4444 Office (707) 455-0455 Fax
todd@caoutdoorproperties.com
www.californiaoutdoorproperties.com

EXCLUSIVE PARTNER OF

