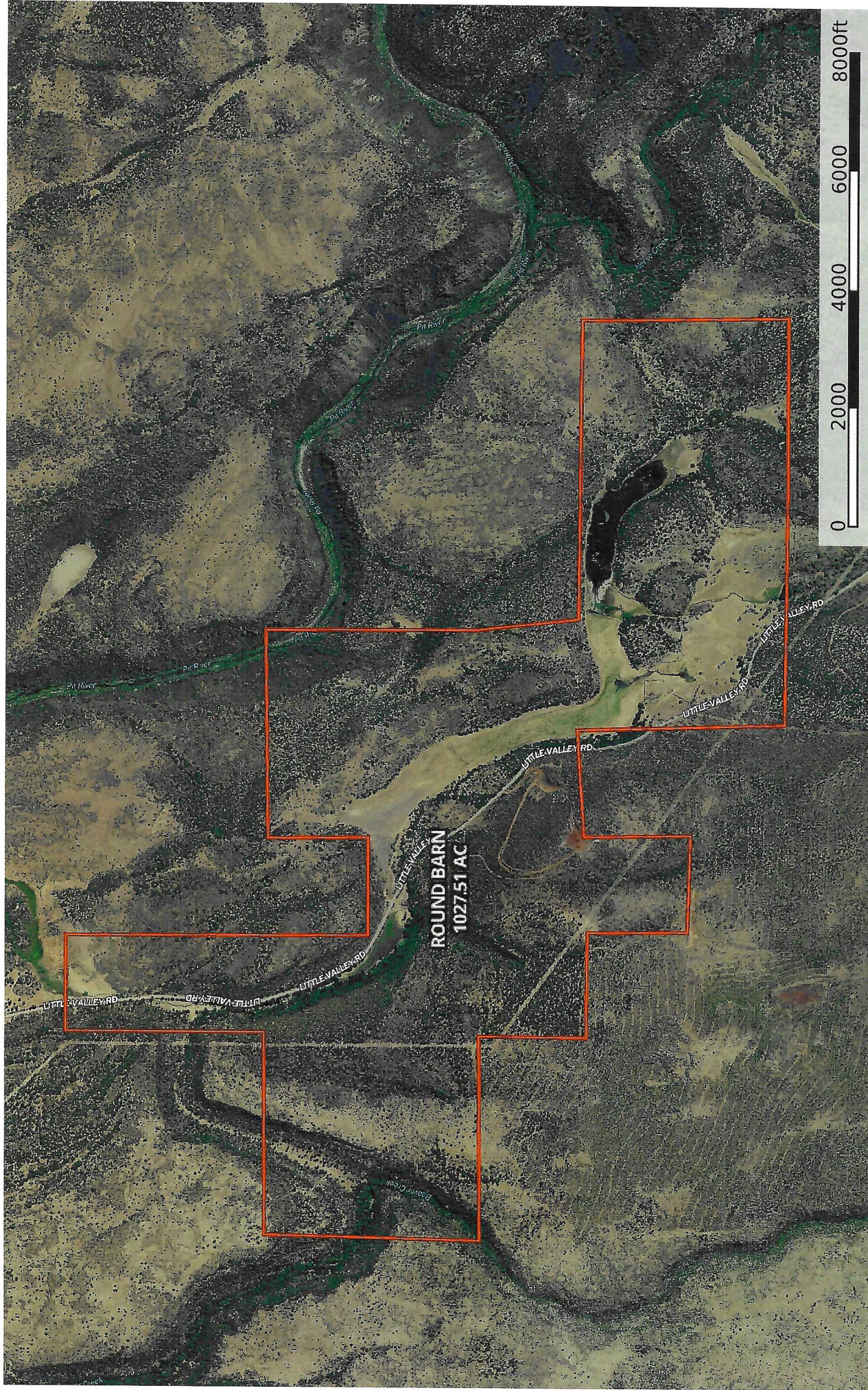


**Beaver Creek Ranch**  
Lassen County, California, 1 AC +/-



 Boundary

 Boundary

**Donna Utterback**  
P: 530-604-0700

californiaoutdoorproperties.com

P. O. Box 535, Fall River Mills, CA, 96028



The information contained herein was obtained from sources deemed to be reliable. MapRight Services makes no warranties or guarantees as to the completeness or accuracy thereof.