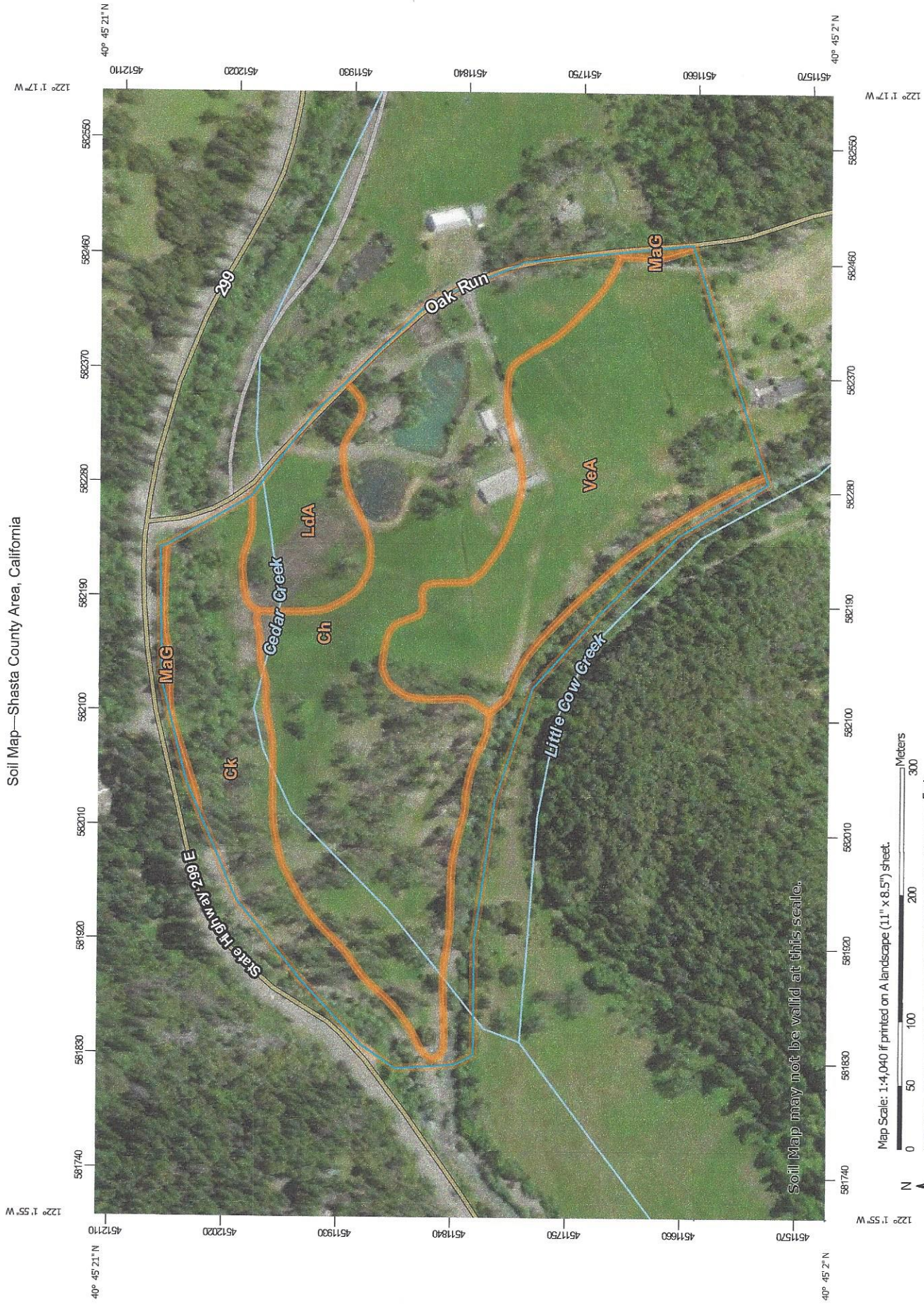



Soil Map—Shasta County Area, California





## MAP LEGEND

 Area of Interest (AOI)	 Spoil Area
 Soils	 Stony Spot
 Soil Map Unit Polygons	 Very Stony Spot
 Soil Map Unit Lines	 Wet Spot
 Soil Map Unit Points	 Other
<b>Special Point Features</b>	 Special Line Features
 Blowout	<b>Water Features</b>
 Borrow Pit	 Streams and Canals
 Clay Spot	<b>Transportation</b>
 Closed Depression	 Rails
 Gravel Pit	 Interstate Highways
 Gravelly Spot	 US Routes
 Landfill	 Major Roads
 Lava Flow	 Local Roads
 Marsh or swamp	<b>Background</b>
 Mine or Quarry	 Aerial Photography
 Miscellaneous Water	
 Perennial Water	
 Rock Outcrop	
 Saline Spot	
 Sandy Spot	
 Severely Eroded Spot	
 Sinkhole	
 Slide or Slip	
 Sodic Spot	

## MAP INFORMATION

The soil surveys that comprise your AOI were mapped at 1:20,000.

Warning: Soil Map may not be valid at this scale.

Enlargement of maps beyond the scale of mapping can cause misunderstanding of the detail of mapping and accuracy of soil line placement. The maps do not show the small areas of contrasting soils that could have been shown at a more detailed scale.

Please rely on the bar scale on each map sheet for map measurements.

Source of Map: Natural Resources Conservation Service  
 Web Soil Survey URL:  
 Coordinate System: Web Mercator (EPSG:3857)

Maps from the Web Soil Survey are based on the Web Mercator projection, which preserves direction and shape but distorts distance and area. A projection that preserves area, such as the Albers equal-area conic projection, should be used if more accurate calculations of distance or area are required.

This product is generated from the USDA-NRCS certified data as of the version date(s) listed below.

Soil Survey Area: Shasta County Area, California  
 Survey Area Data: Version 13, Sep 12, 2018

Soil map units are labeled (as space allows) for map scales 1:50,000 or larger.

Date(s) aerial images were photographed: Feb 21, 2015—Oct 25, 2017

The orthophoto or other base map on which the soil lines were compiled and digitized probably differs from the background imagery displayed on these maps. As a result, some minor shifting of map unit boundaries may be evident.

### Map Unit Legend

Map Unit Symbol	Map Unit Name	Acres in AOI	Percent of AOI
Ch	Cobbly alluvial land	17.4	42.1%
Ck	Cobbly alluvial land, frequently flooded	9.1	22.0%
LdA	Los Robles loam, seeped, 0 to 3 percent slopes	2.9	7.1%
MaG	Marpa gravelly loam, 50 to 75 percent slopes	0.3	0.6%
VeA	Vina loam, flood-plain steps, 0 to 5 percent slopes, MLRA 17	11.6	28.1%
<b>Totals for Area of Interest</b>		<b>41.3</b>	<b>100.0%</b>