

122° 01' 30.0000" W



Cedar Creek

CA 299

OAK RUN RD

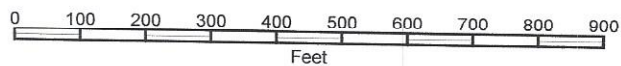
OAK RUN RD

OAK RUN RD

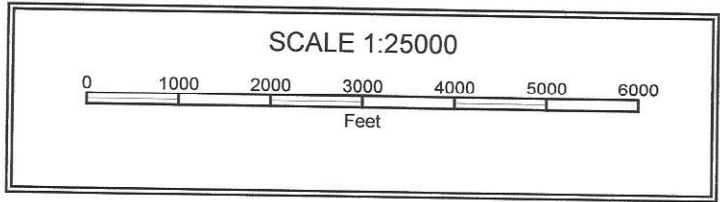
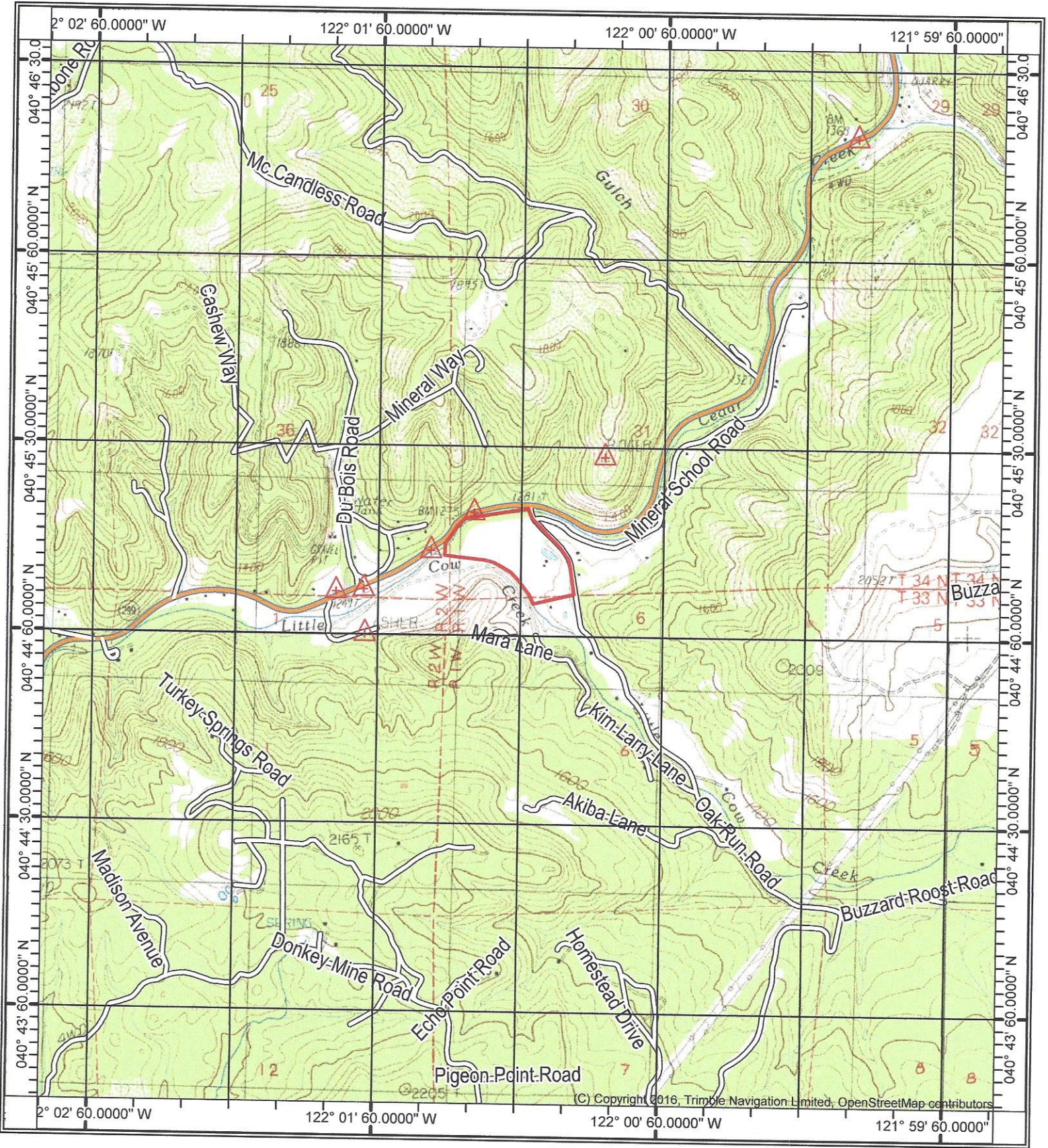
© Copyright 2016, Trimble Navigation Limited, Open StreetMap contributors

122° 01' 30.0000" W

SCALE 1:3500

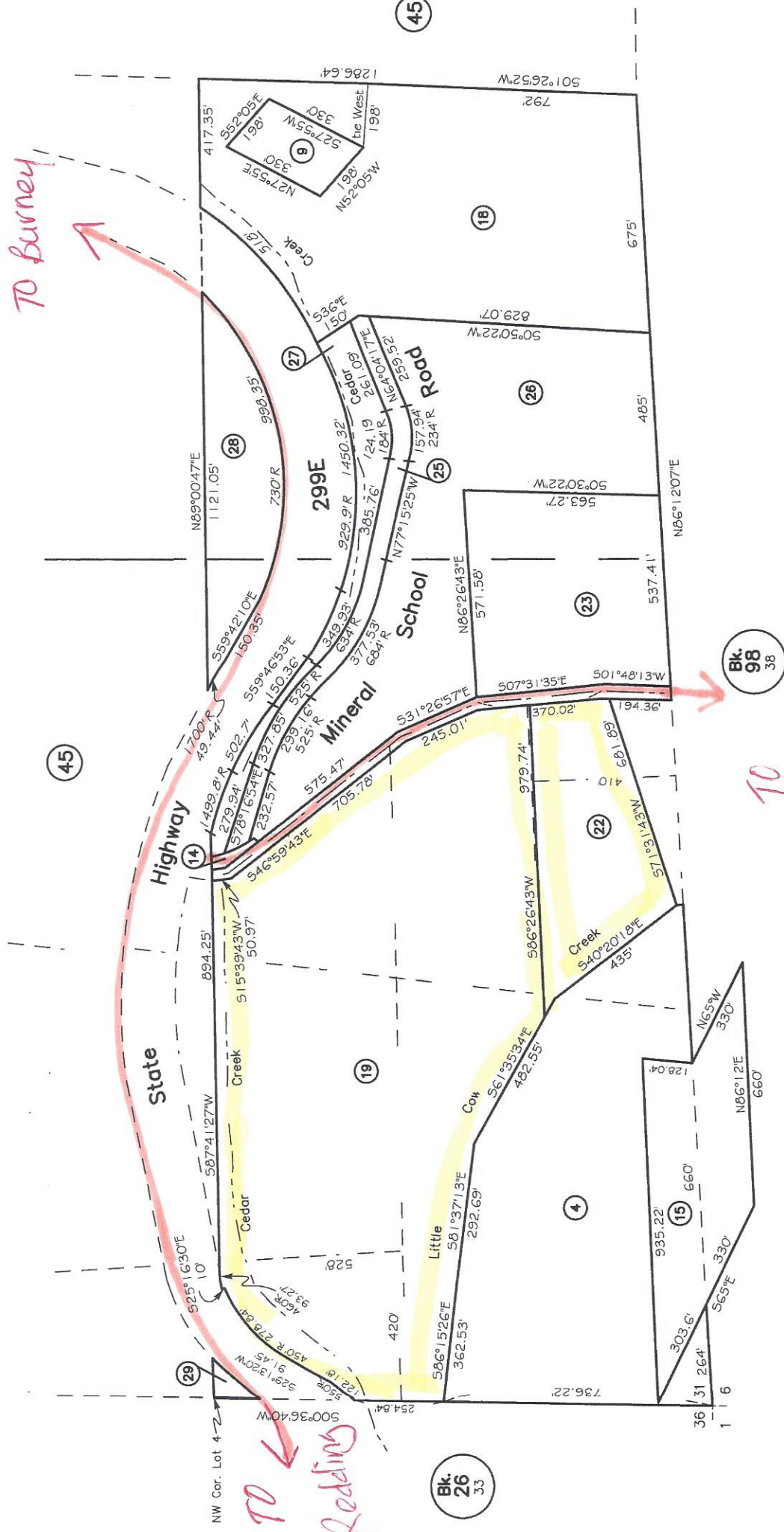


Feet



Por. SW1/4, Sec.31, T34N, R1W

29-27



TO Burrey

TO Redding

TO Oak Run

Bk. 26 33

Bk. 98 38

P.M.29-20,

L.S.32-122,34-72,46-203,56-119,

1/12/2016 3:05:57 PM, bjmas

FOR REFERENCE ONLY
This map reflects information transcribed from documents of record, interpreted by cadastral mapping specialists. The sole intent of this map is for tax assessment is not a legal document nor are any features contained herein intended for or

Stoats County Assessor