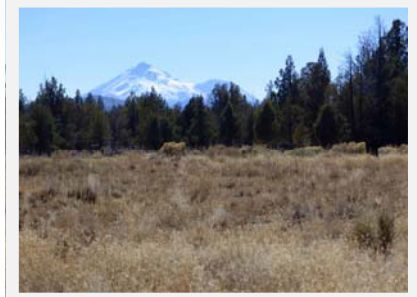


Presenting: Sheep Mountain Home MacDoel, CA



**3330 Sheep Mountain Rd
MacDoel, CA 96058
MLS #112587
Asking \$199,900**



- ◆ 20 +/- Acres
- ◆ 5 Bed, 3 Bath Home
- ◆ Approx. 2,453 sq ft
- ◆ Fruit Trees
- ◆ Good Well
- ◆ Move in Ready
- ◆ Animal Pens
- ◆ Mt. Shasta View
- ◆ Flat Usable Land



**California Outdoor Properties—Siskiyou County Branch
Kathy Hayden • Nicole Harris • Amy Friend
Office: 530. 643.1336 • Amy@AmyFriend.com
Lic. 01081339 • Lic. 02033451 • Lic. 01328922
www.CaliforniaOutdoorProperties.com**



**California
OUTDOOR PROPERTIES**

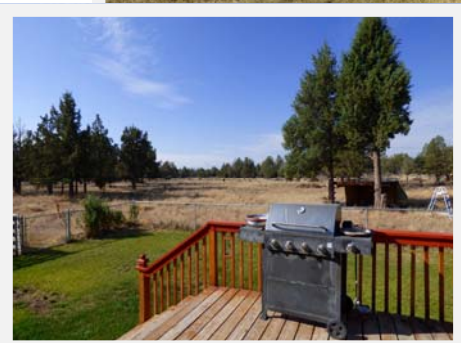
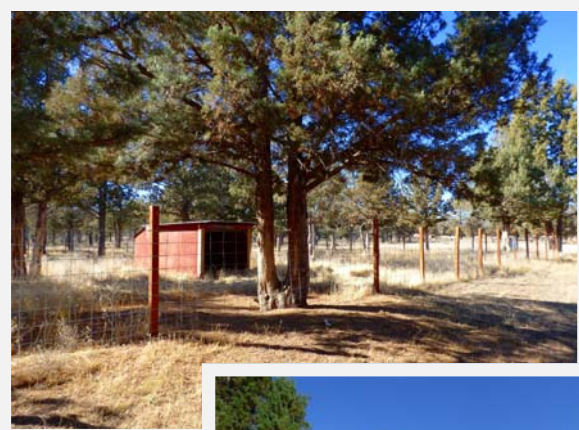
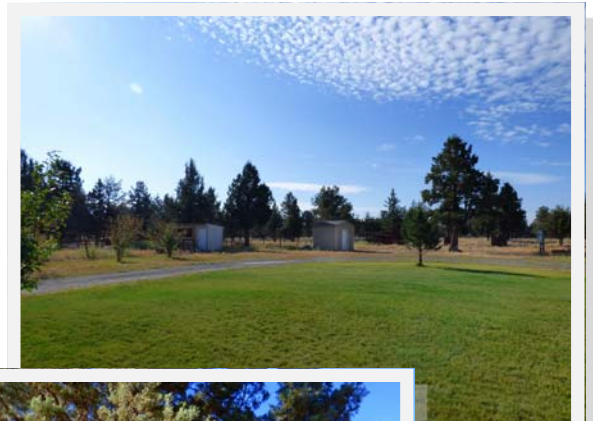


EXCLUSIVE PARTNER OF

LAND LEADER™

Sheep Mountain Home

Large manufactured home with great open floor plan and located on 20 useable acres. Inside you will find 5 bedrooms and three baths including a large master suite with a nice office/bonus room, walk in closet, and double sinks in the bathroom. The living room, dining room, and kitchen are all open with vaulted ceilings and views out to the back yard and Mount Shasta beyond. This home is equipped with an electric heat pump as well as a Blaze King wood stove for super-efficient and cozy heat in the winter. Outside is a nice fenced lawn, fruit trees, and many different animal pens, perfect for 4H or homestead projects. The land is all flat and useable with some area cleared to enhance the view. Good well, outbuildings, and lots of space to add a garden, horses/livestock, or???



California Outdoor Properties—Siskiyou County Branch
Kathy Hayden • Nicole Harris • Amy Friend
Office: 530. 643.1336 • Amy@AmyFriend.com
Lic. 01081339 • Lic. 02033451 • Lic. 01328922
www.CaliforniaOutdoorProperties.com



California
OUTDOOR PROPERTIES



EXCLUSIVE PARTNER OF
LAND LEADER™