



California
OUTDOOR PROPERTIES

FARMS | RANCHES | RECREATIONAL PROPERTIES | LAND | LUXURY ESTATES



Garcia River Ranch

1058 +/- acres, Point Arena, CA
Mendocino County



707 Merchant Street | Suite 100 | Vacaville, CA 95688

707-455-4444 Office | 707-455-0455 Fax | californiaoutdoorproperties.com

DRE# 01838294





California
OUTDOOR PROPERTIES

FARMS | RANCHES | RECREATIONAL PROPERTIES | LAND | LUXURY ESTATES

Introduction

Mendocino County, home to some of the most beautiful property along the Pacific Ocean coastline. Step back in time to a simpler life style, breathe in the fresh salt air, and as the waves crash against the shore in the distance, you gaze out over the acres of prime redwood and fir and relax in your secluded environment. 1058 acres consisting of timber, grazing land, a home, a barn, and Pacific Ocean views; one can truly get away from it all and commune with nature. Hike through the forest, or sit quietly and watch as the small forest animals scamper about. Cast your line in the Garcia River, amble over to your pasture to watch the cattle graze, take a refreshing dip in the river or nearby ocean, or gaze at the clouds overhead from the comfort of your favorite hammock. This property is the antidote to modern civilization. Located on Garcia River Road, this property is 10 minutes from the town of Point Arena, 2 hours from Santa Rosa, and approximately 3 hours from San Francisco.



Location

Located in Mendocino County, this property is 5 miles from the town of Point Arena, California. Air service is available through Little River Airport, 32 miles away. Santa Rosa / Sonoma County Airport is 81 miles away, and San Francisco International Airport is 142 miles away. The closest schools would be 5 miles away in Point Arena. From the North, take CA-1 South, right onto Main Street, left onto Riverside Drive, left onto Buckridge Road, sharp left onto Riverside Drive, slight left onto Garcia River Road. From the South, take CA-1 North, right onto Riverside Drive, left onto Buckridge Road, sharp left onto Riverside Drive, slight left onto Garcia River Road.



California
OUTDOOR PROPERTIES

FARMS | RANCHES | RECREATIONAL PROPERTIES | LAND | LUXURY ESTATES

Highlights

- Recreational paradise
 - Hunt, fish, bike, kayak, swim, relax
- 1058 acres of timberland and grazing land
 - 908 acres of redwood and fir
 - 150 acres of grazing land
- Certificates of Compliance for 6 legal parcels
- Approximately 1 million board feet of merchantable timber
- Estimated 12 million board feet of redwood and fir
- Approximately 1.5 miles of frontage property along the Garcia River
- 3 bedroom / 2 bathroom home
- Barn
- 4 GPM well, as provided by owner
- Ocean views





California
OUTDOOR PROPERTIES

FARMS | RANCHES | RECREATIONAL PROPERTIES | LAND | LUXURY ESTATES





California
OUTDOOR PROPERTIES

FARMS | RANCHES | RECREATIONAL PROPERTIES | LAND | LUXURY ESTATES

Size and Zoning

The 1058+/- acre ranch consists of eleven parcels:

APN#	Acres:	Zoning:
027-171-16-05	90.77	TP
027-171-17-05	150.69	FL
027-181-04-05	1.04	FL
027-181-06-00	40	FL
027-181-07-00	64	FL
027-181-12-00	373.72	TP
133-150-11-01	120	RL
133-150-12-01	80	RL
133-150-13-01	111.54	TP
133-200-05-01	21.65	TP
133-200-06-00	5	FL

This property is governed by the Mendocino County Zoning Ordinance. TP is Timberland Production, RL is Rangelands, and FL is Forest Lands. Please refer to the Mendocino County Code, Chapter 20, Zoning Regulations for a complete list of allowed uses for this property.

Current Property Taxes: \$18,428





California
OUTDOOR PROPERTIES

FARMS | RANCHES | RECREATIONAL PROPERTIES | LAND | LUXURY ESTATES

Timberland

Approximately 58% of the 12 million board feet of timber is redwood. The other 42% is fir. The timber volume is largely standing volume. Harvestable volume to be determined by the next owner. This property contains over 1 million board feet of merchantable timber.



Recreational Activities

This ranch provides serenity and privacy from the hectic pace of the urban lifestyle. Grab your pole and challenge your inner angler. Perhaps a day of sea or river kayaking beckons. Hike or bike through the vast forest. Mount your trusty steed and mosey about the property. Slide out of your hammock to dip your toes in the cool waters of the Garcia River. Or, simply grab your favorite beverage and book, stretch out and relax. Here, the multiple possibilities





California
OUTDOOR PROPERTIES

FARMS | RANCHES | RECREATIONAL PROPERTIES | LAND | LUXURY ESTATES

About Point Arena



Point Arena is a small coastal city located 32 miles west of Hopland, home of multiple microbreweries. The population was 449 at the 2010 U.S. census. The main street comprises part of State Highway 1, California's coastal artery. A variety of fauna and flora occur in the Point Arena area. The location is also sometimes a range demarcation for occurrence of some species. Additionally, two marine protected areas extend offshore from Point Arena. Like underwater parks, these marine protected areas help conserve ocean wildlife and marine ecosystems. Point Arena/Stornetta Public Lands is California's newest monument. To access this 1664 acres of dramatic, wind-swept sea cliffs, wildflowers, and tide pools, from behind City Hall, follow a path to the top of the striated ocean cliffs to watch dive-bombing seabirds, surfers working the break below, and boats unloading abalone. Two miles to the north, the pencil-thin Point Arena Lighthouse marks the westernmost point in the Lower 48. Meet kudu, roan antelope, three kinds of zebra, and giraffe at the B. Bryan Preserve. Or walk along the many beaches by this coastal town.



California
OUTDOOR PROPERTIES

FARMS | RANCHES | RECREATIONAL PROPERTIES | LAND | LUXURY ESTATES

About Mendocino County



Mendocino County is a county located on the north coast of California. As of the 2010 census, the population was 87,841. The county seat is Ukiah. The county is noted for its distinctive Pacific Ocean coastline, its location along the coast, Redwood forests, wine production, and microbrews. The notable historic and recreational attraction of the Skunk Train connects Fort Bragg with Willits via a steam locomotive engine. Mendocino County was one of the original counties of California, created in 1850 at the time of statehood.





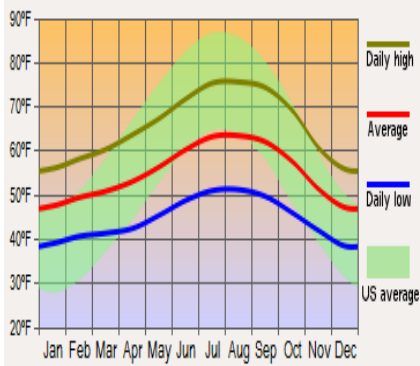
California
OUTDOOR PROPERTIES

FARMS | RANCHES | RECREATIONAL PROPERTIES | LAND | LUXURY ESTATES

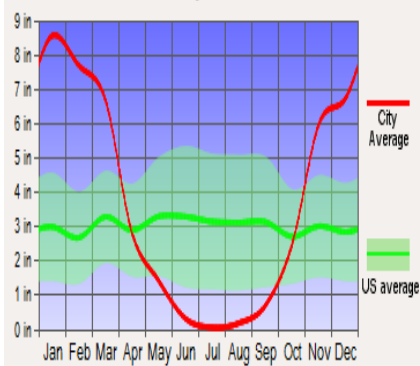
Weather



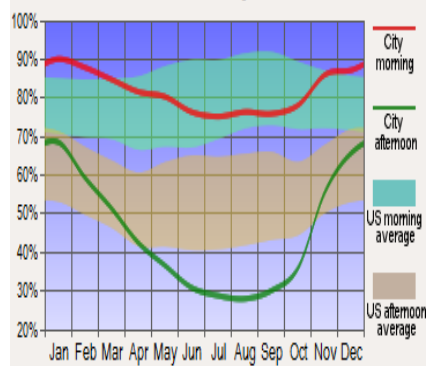
Average Temperatures



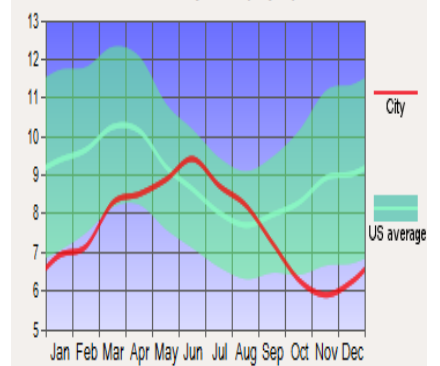
Precipitation



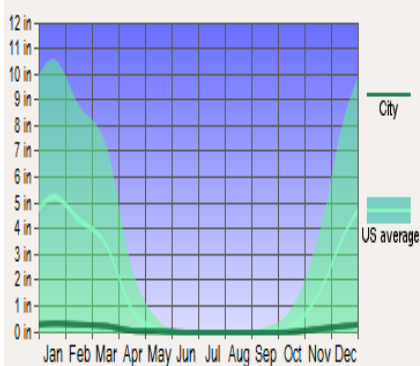
Humidity



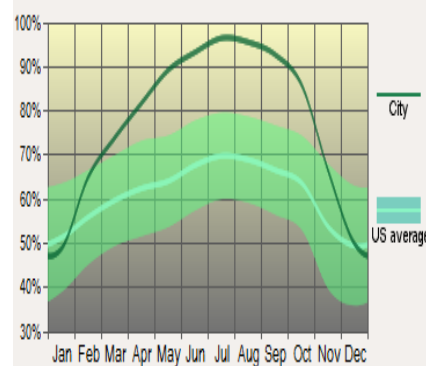
Wind Speed (mph)



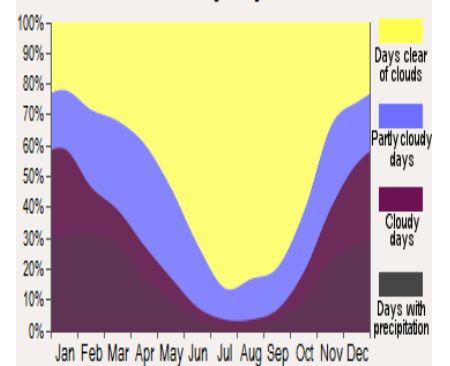
Snowfall

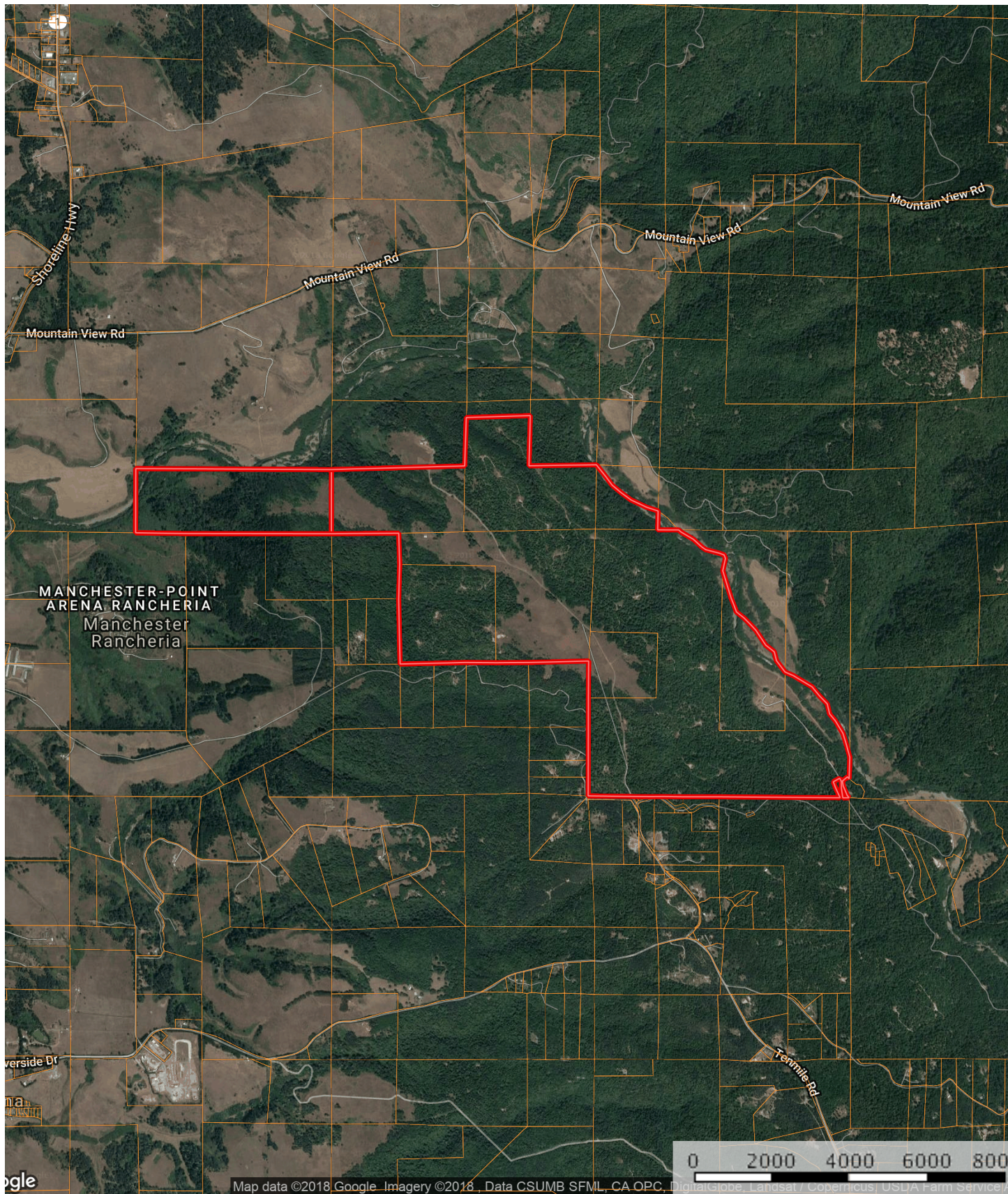


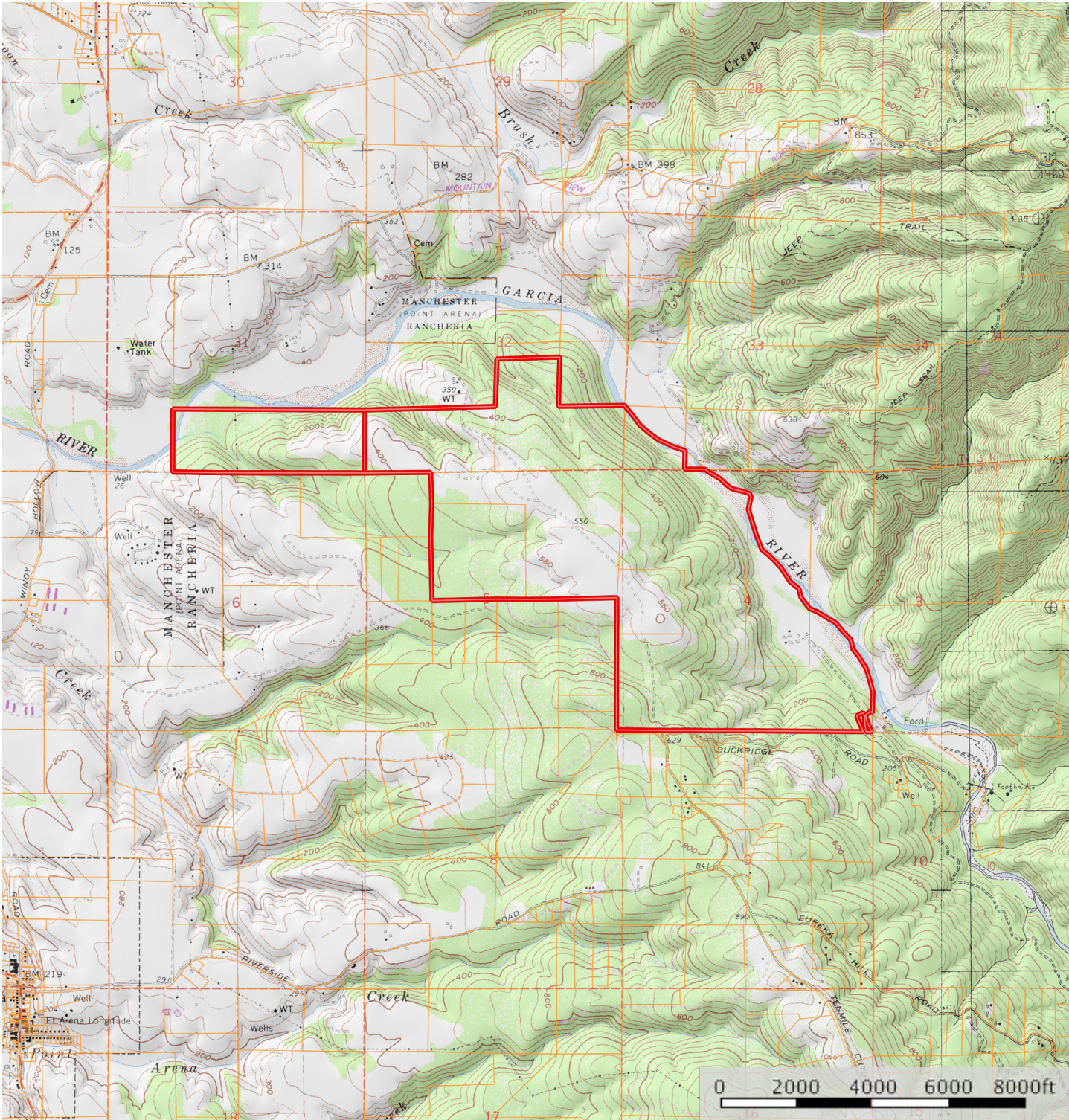
Sunshine




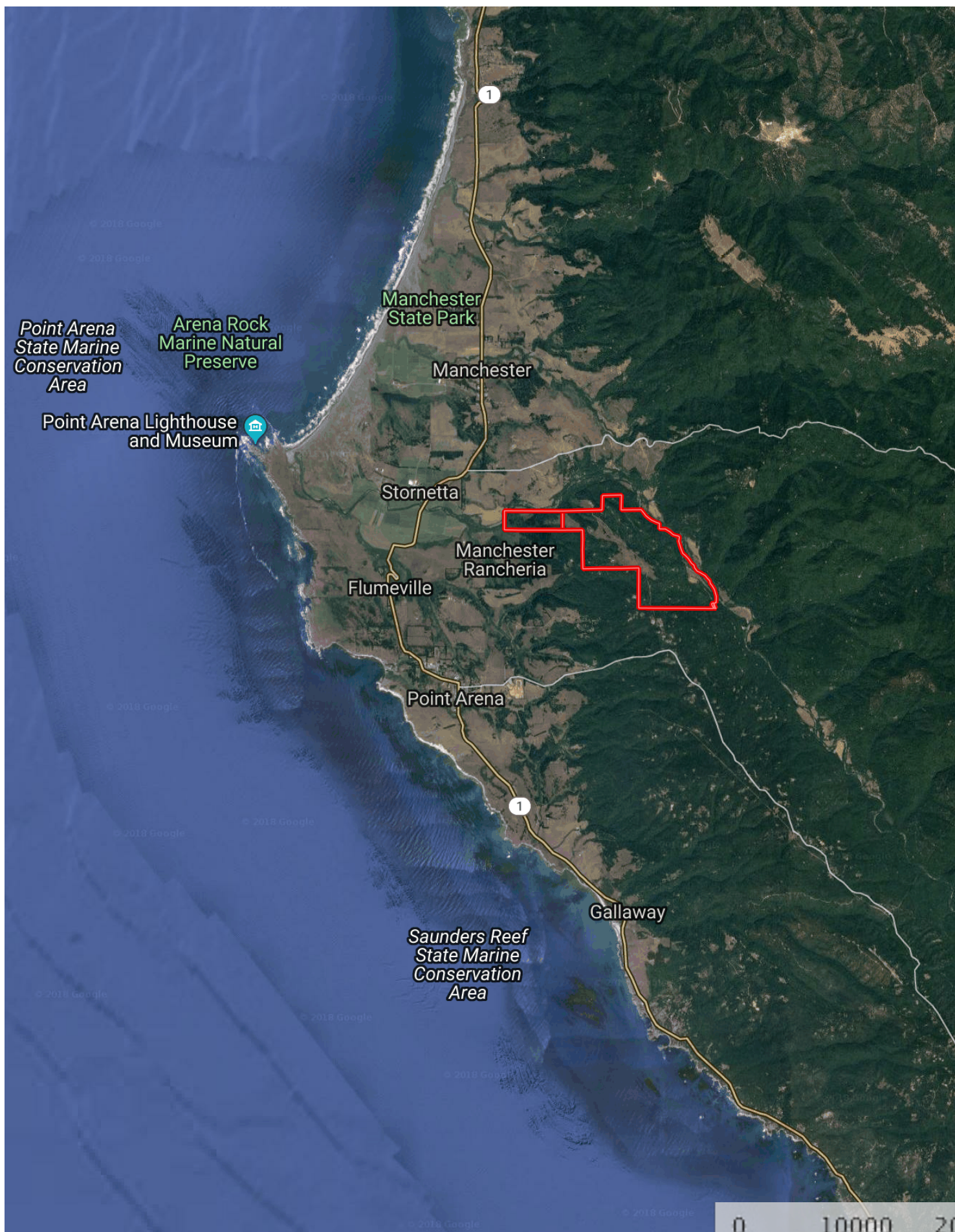
Cloudy Days







 Boundary





California Outdoor Properties, Inc is pleased to have been selected as the Exclusive Agent for the seller of this offering. All information has been obtained from sources deemed reliable by California Outdoor Properties, Inc. however, the accuracy of this information is not guaranteed or warranted by either California Outdoor Properties, Inc., the sellers, and prospective buyers are charged with making and are expected to conduct their own independent investigation of the information contained herein. This offering is subject to prior sale, price change, correction or withdrawal without notice and any offer presented does not have to be accepted.

California Outdoor Properties Inc.
707 Merchant Street, Suite 100
Vacaville, California 95688
(707) 455-4444 Office (707) 455-0455 Fax
todd@caoutdoorproperties.com
www.californiaoutdoorproperties.com

