

Jerome Butte Homestead

MacDoel, CA



- Two Homes
- 3 Bed/ 2 Bath
- Kitchen/Livingroom Freshly Remodeled
- 2 Bed/ 1 Bath
- Mr. Berry's Cabin
- Root Cellar



- Pond with Fish
- Year Round Creek
- Green House
- Meadow Area
- Fruit Trees
- 40.5 +/- Acres



California Outdoor Properties—Siskiyou County Branch
Kathy Hayden • Nicole Harris • Amy Friend
Office: 530. 643.1336 • Amy@AmyFriend.com
Lic. 01081339 • Lic. 02033451 • Lic. 01328922
www.CaliforniaOutdoorProperties.com



California
OUTDOOR PROPERTIES



EXCLUSIVE PARTNER OF
LAND LEADER™

History & Opportunity!

Once the location of an active sawmill, Jerome is now just a dot on the map, and the perfect spot for your multi-unit compound or homestead. There are two homes, plus an old cabin used for storage known as “Mr. Berry’s House”.

The main house has an open floor plan and is an estimated 1700 +/- sq.ft. with 3 bedrooms, 2 bathrooms. There are new floors throughout and a complete kitchen/livingroom remodel. The second home was originally a cabin, remodeled in the 1960s, which is

currently used as a guest house. With 2 bedrooms and 1 bath this home is an estimated 1300 sq.ft. including two unfinished rooms used for storage.



There are several outbuildings on the property, including three greenhouses, the larger main one being approximately 20' x 50' and home to an assortment of herbs and vegetables. Outside you will find fruit trees on both sides of the creek and plenty of space to add your own specialties. Your livestock will love the grassy banks of Butte Creek and a nice meadow area before the property heads back along the base of Jerome Butte to the trout and bass pond.

**Contact us for a more detailed information & to book your private tour today!
Now Offered for \$439,000**



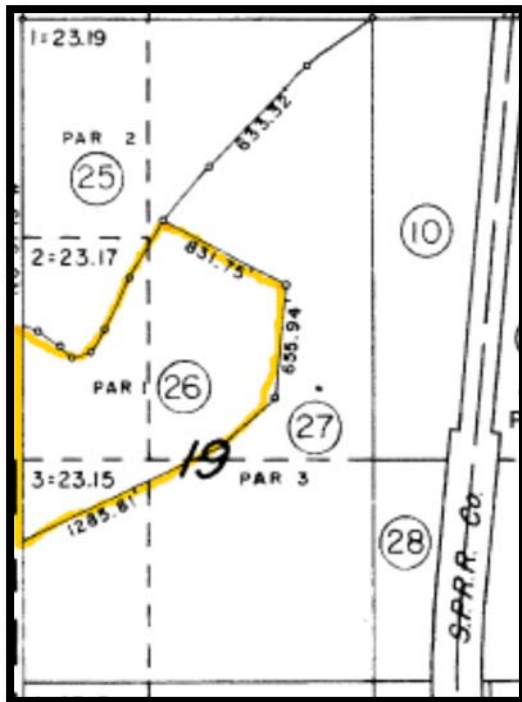
California
OUTDOOR PROPERTIES



**Private location
behind locked
gate with limited
neighbors!**



**Located outside
MacDoel, CA off
State Highway 97.**



California Outdoor Properties—Siskiyou County Branch
Kathy Hayden • Nicole Harris • Amy Friend
Office: 530. 643.1336 • Amy@AmyFriend.com
Lic. 01081339 • Lic. 02033451 • Lic. 01328922
www.CaliforniaOutdoorProperties.com



California
OUTDOOR PROPERTIES



EXCLUSIVE PARTNER OF

LAND LEADER