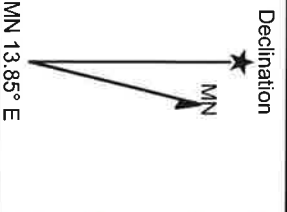
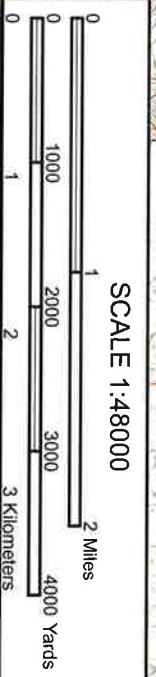
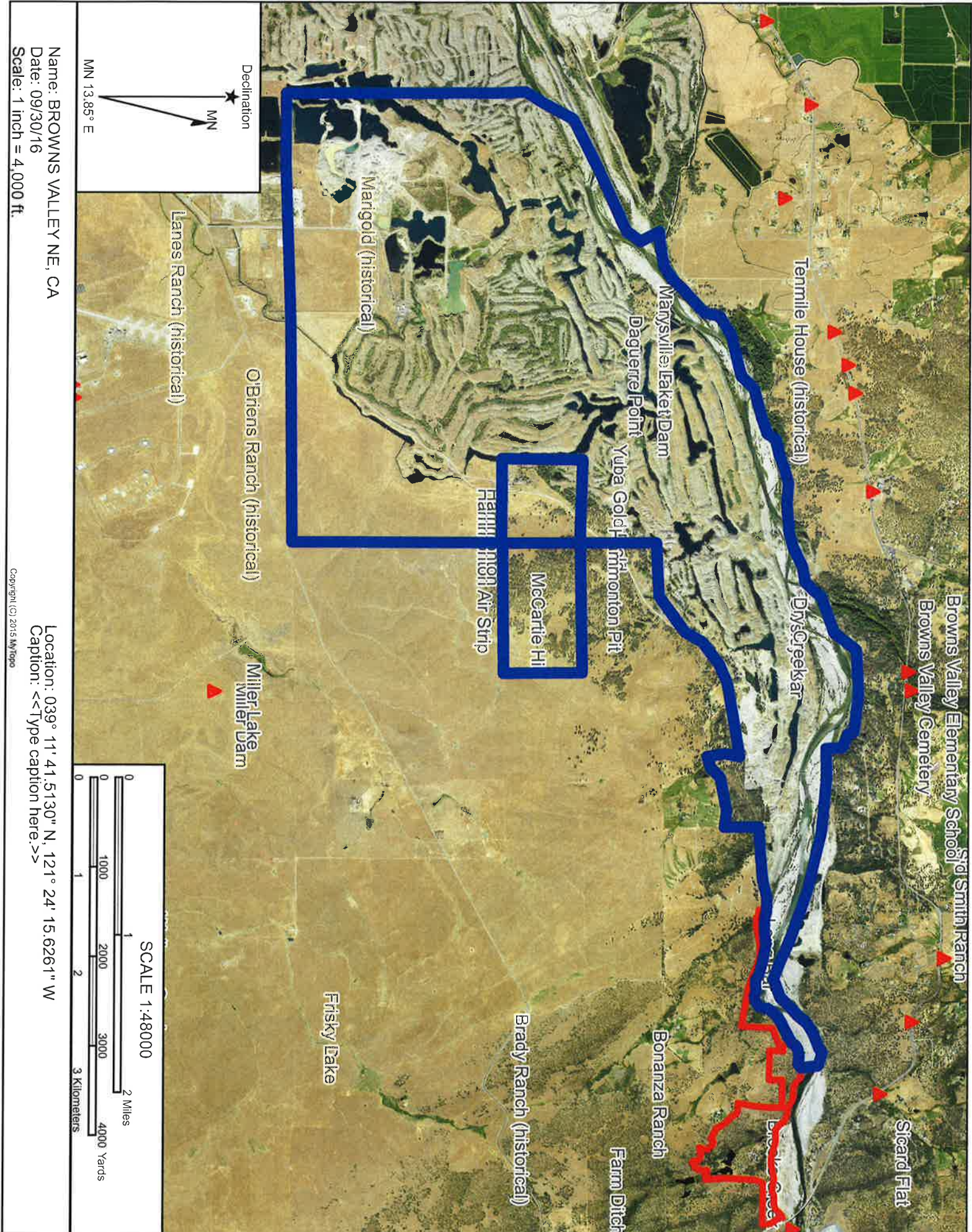


Name: BROWNS VALLEY
Date: 09/30/16
Scale: 1 inch = 4,000 ft.

Copyright (C) 2009 Maptopo

Location: 039° 11' 37.4930" N, 121° 24' 10.5074" W
Caption: <<Type caption here.>>





Browns Valley Elementary School
 Browns Valley Cemetery

Sicard Flat

Tennile House (historical)

Dry Creek

Marysville Lake Dam

Yuba Gold Mine

Bonanza Ranch

Daguerre Point

Yuba Gold Mine

Brady Ranch (historical)

McCarty Hill

Miller-Lake Dam

Margold (historical)

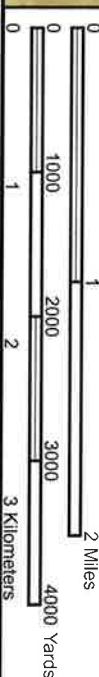
Frisky Lake

O'Briens Ranch (historical)

Miller-Lake Dam

Lanes Ranch (historical)

SCALE 1:48000



Name: BROWNS VALLEY NE, CA
 Date: 09/30/16
 Scale: 1 inch = 4,000 ft.

Location: 039° 11' 41.5130" N, 121° 24' 15.6261" W
 Caption: <<Type caption here.>>

Copyright (C) 2015 MyTopo