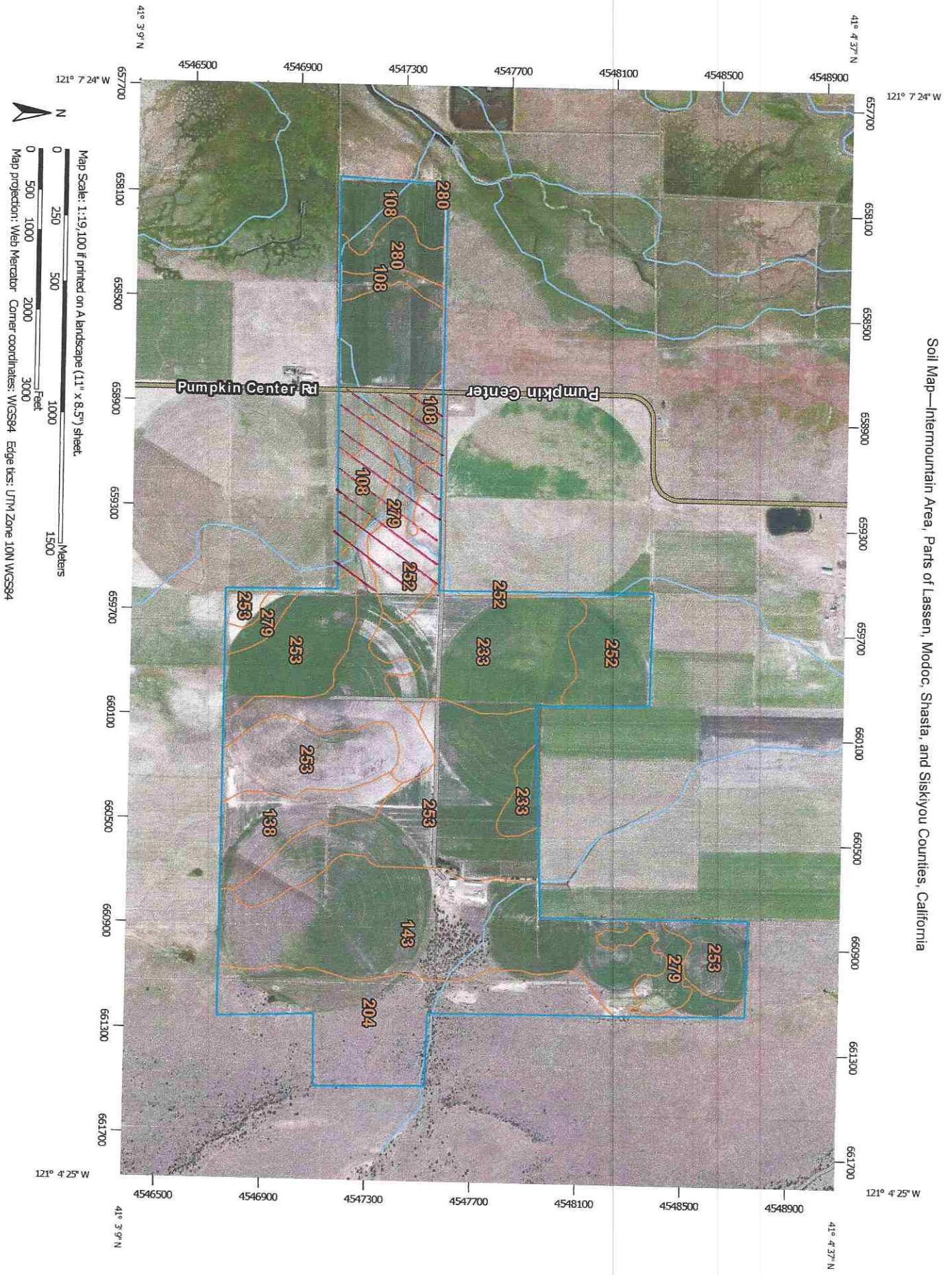


Soil Map—Intermountain Area, Parts of Lassen, Modoc, Shasta, and Siskiyou Counties, California





## MAP LEGEND

	Area of Interest (AOI)		Area of Interest (AOI)
	Soils		Soil Map Unit Polygons
			Soil Map Unit Lines
			Soil Map Unit Points
	Special Point Features		Special Line Features
	Blowout		Streams and Canals
	Borrow Pit		Transportation
	Clay Spot		+++ Rails
	Closed Depression		Interstate Highways
	Gravel Pit		US Routes
	Gravelly Spot		Major Roads
	Landfill		Local Roads
	Lava Flow		Background
	Marsh or swamp		Aerial Photography
	Mine or Quarry		
	Miscellaneous Water		
	Perennial Water		
	Rock Outcrop		
	Saline Spot		
	Sandy Spot		
	Severely Eroded Spot		
	Sinkhole		
	Slide or Slip		
	Sodic Spot		

## MAP INFORMATION

The soil surveys that comprise your AOI were mapped at 1:24,000. Please rely on the bar scale on each map sheet for map measurements.

Source of Map: Natural Resources Conservation Service  
 Web Soil Survey URL: <http://websoilsurvey.nrcs.usda.gov>  
 Coordinate System: Web Mercator (EPSG:3857)

Maps from the Web Soil Survey are based on the Web Mercator projection, which preserves direction and shape but distorts distance and area. A projection that preserves area, such as the Albers equal-area conic projection, should be used if more accurate calculations of distance or area are required.

This product is generated from the USDA-NRCS certified data as of the version date(s) listed below.

Soil Survey Area: Intermountain Area, Parts of Lassen, Modoc, Shasta, and Siskiyou Counties, California  
 Survey Area Data: Version 9, Sep 16, 2014

Soil map units are labeled (as space allows) for map scales 1:50,000 or larger.

Date(s) aerial images were photographed: Jun 28, 2010—Jul 15, 2010

The orthophoto or other base map on which the soil lines were compiled and digitized probably differs from the background imagery displayed on these maps. As a result, some minor shifting of map unit boundaries may be evident.



### Map Unit Legend

Intermountain Area, Parts of Lassen, Modoc, Shasta, and Siskiyou Counties, California (CA604)			
Map Unit Symbol	Map Unit Name	Acres in AOI	Percent of AOI
108	Bieber-Modoc complex, 0 to 5 percent slopes	50.7	6.4%
138	Cupvar silty clay, 0 to 2 percent slopes	31.7	4.0%
143	Datom clay loam, 2 to 9 percent slopes	142.1	18.1%
204	Jellycamp-Vansickle complex, very cobbly loam, 2 to 9 percent slopes	85.9	10.9%
233	Longbilly-Modoc complex, 0 to 2 percent slopes	81.7	10.4%
252	Modoc loam, slightly sodic, 0 to 2 percent slopes	58.5	7.4%
253	Modoc sandy loam, 2 to 5 percent slopes	192.9	24.5%
279	Pit silty clay, drained, 0 to 2 percent slopes	127.8	16.3%
280	Pit silty clay, frequently flooded, 0 to 1 percent slopes	14.9	1.9%
<b>Totals for Area of Interest</b>		<b>786.2</b>	<b>100.0%</b>