

T 45 N R 5 W

Tax Area Code
87-03
95-02

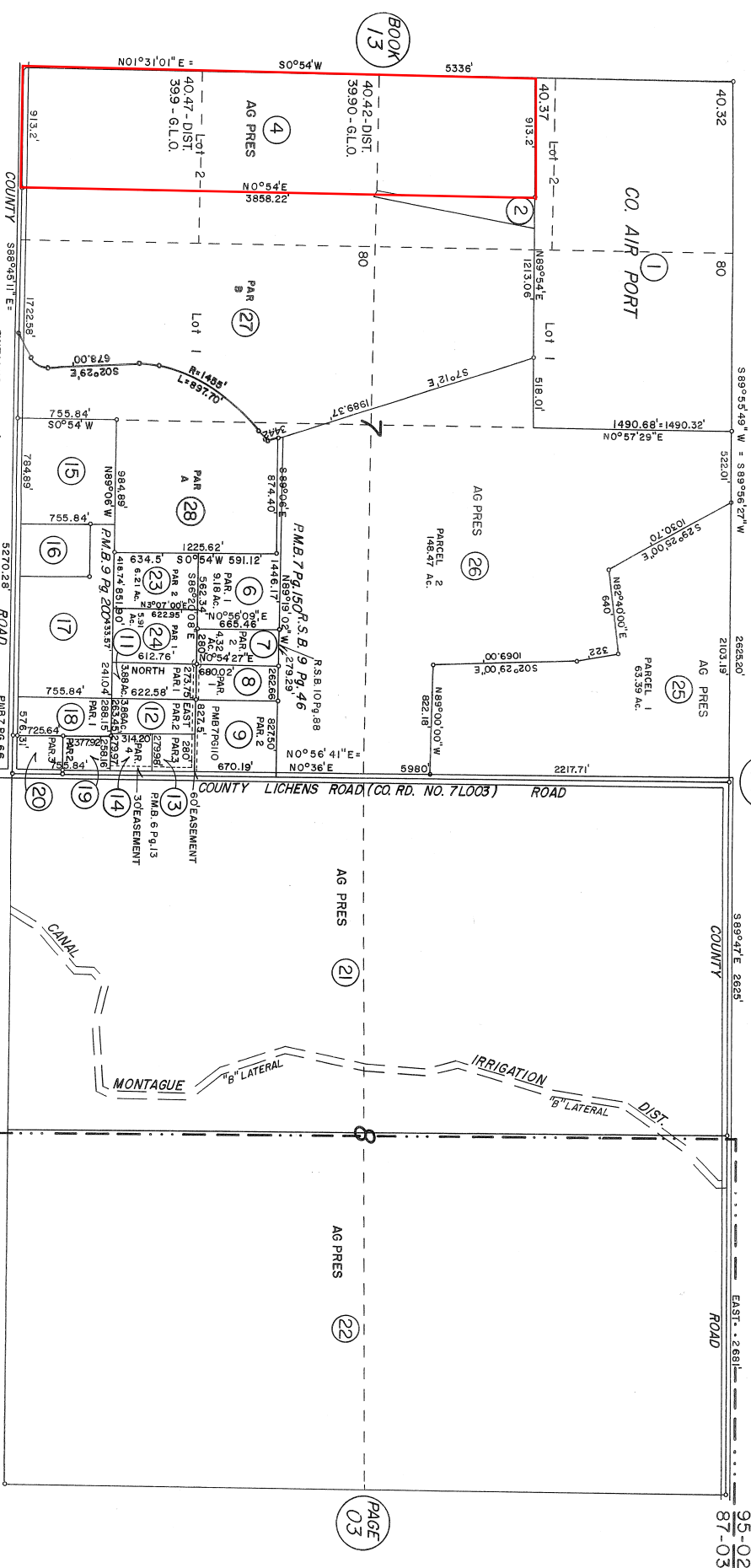
39-05

R.S.B. 20-190

P.M.B. 13-74

PAGE 04

95-02
87-03



95-02
87-03

PAGE 03

PAGE 06

R.S.B. 17-199

R.S.B. 10 Pg. 31

R.S.B. 10 Pg. 31

R.S.B. 10 Pg. 31

R.S.B. 10 Pg. 31

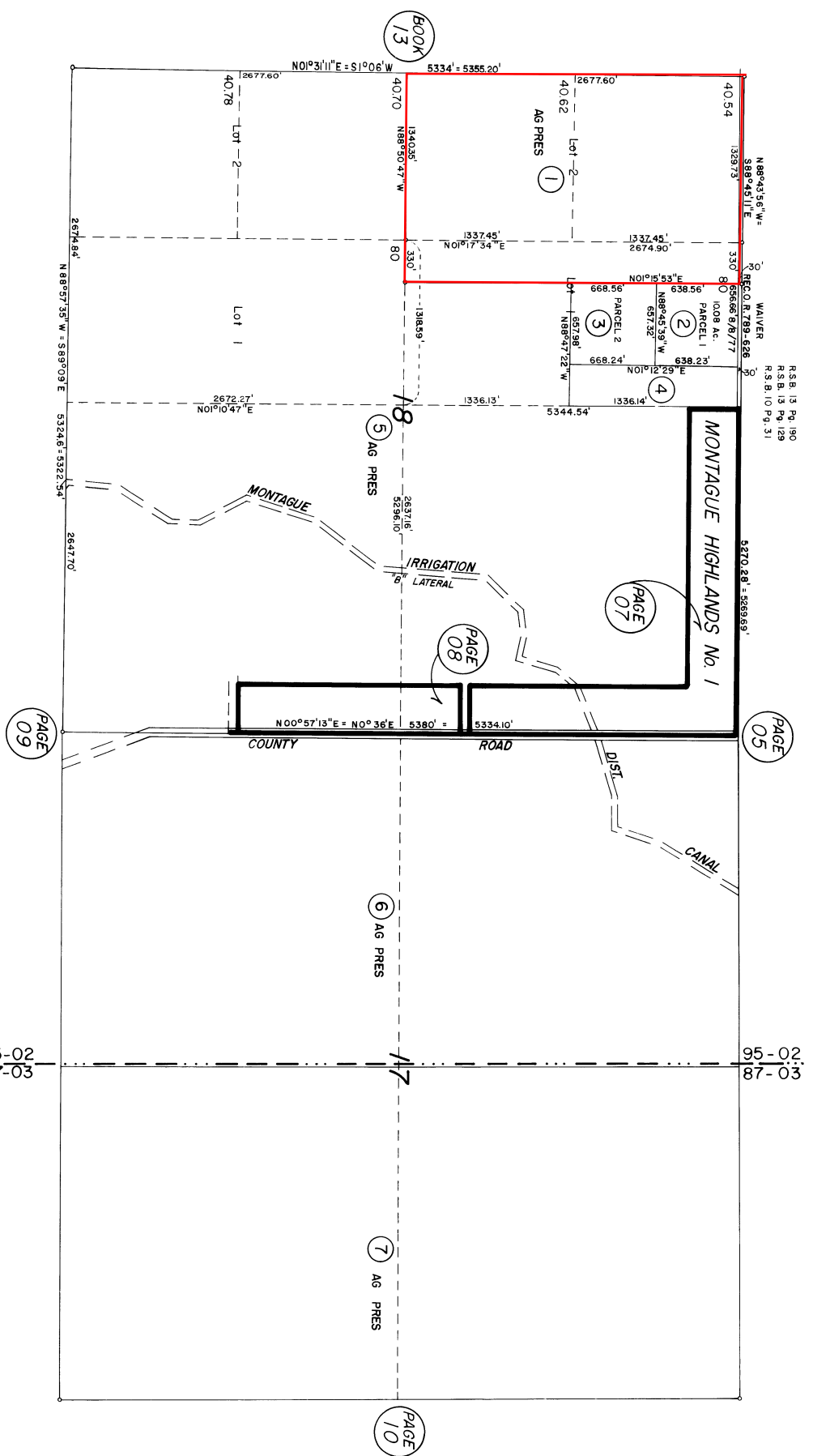
ASSESSOR'S LAND SURVEY MAP
THIS MAP WAS PREPARED FOR
ASSESSMENT PURPOSES ONLY.
NO LIABILITY IS ASSUMED
FOR THE ACCURACY OF THE
DATA SHOWN
ASSESSOR'S PARCELS MAY NOT
COMPLY WITH LOCAL LOT-SPLIT
OR RIM DIME SITE REGULATIONS

Siskiyou County Assessor's Office
October, 1981
Traced from data available 1979

T 45 N R 5 W

Tax Area Code
87-03
95-02

39-06



95-02
87-03

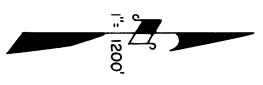
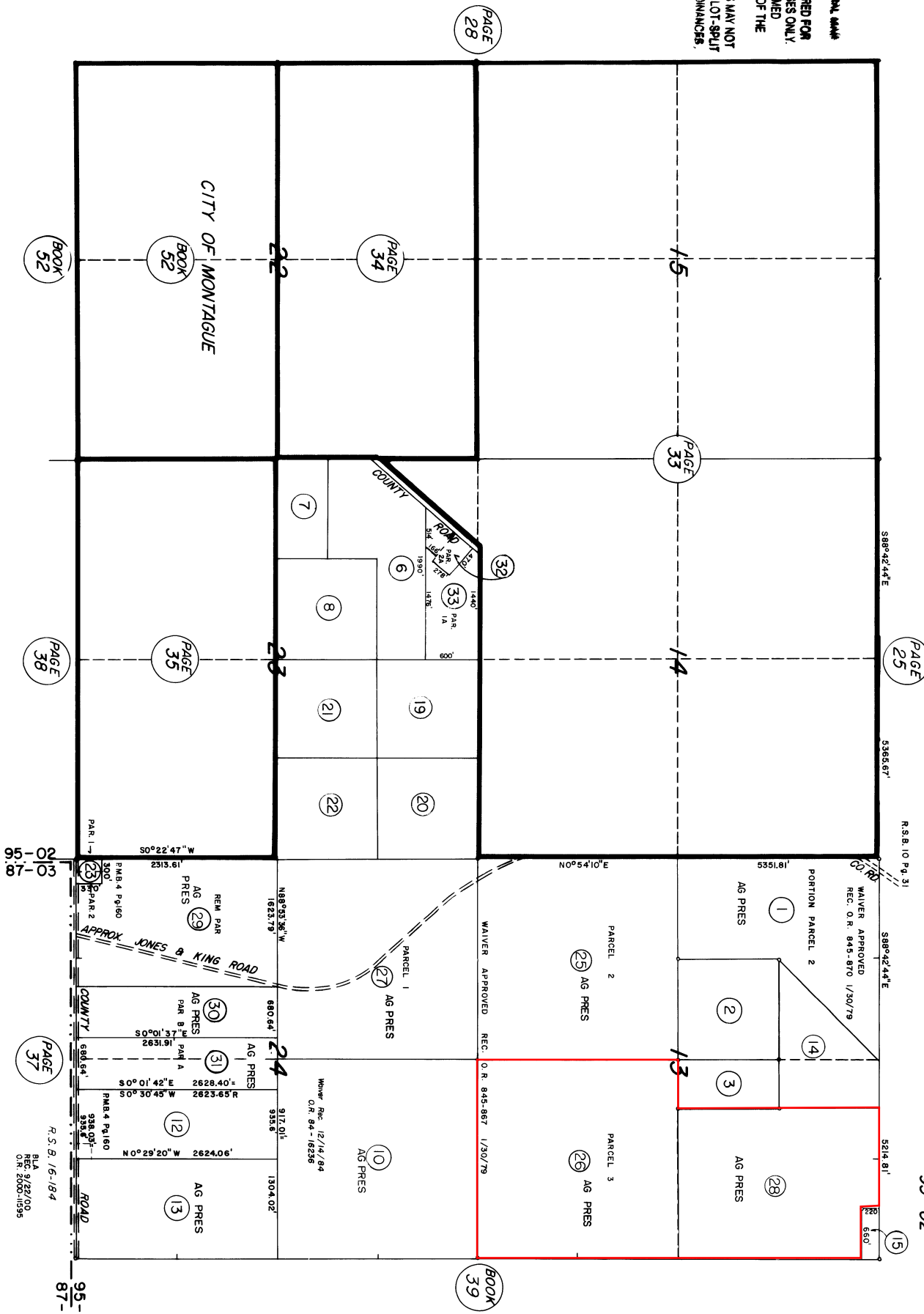
Siskiyou County Assessor's Office
October, 1981
Traced from light mylar April, 1983

ASSESSOR'S CADASTRAL MAP
THIS MAP WAS PREPARED FOR
ASSESSMENT PURPOSES ONLY.
NO LIABILITY IS ASSUMED
FOR THE ACCURACY OF THE
DATA SHOWN.
ASSESSOR'S PARCELS MAY NOT
COMPLY WITH LOCAL LOT-SPLIT
OR BUILDING SITE ORDINANCES.

T45 N R6W

Tax Area Code
95-02

13-36



PAGE 28 PAGE 34 PAGE 33 PAGE 25 PAGE 35 PAGE 38 PAGE 37 PAGE 39

BOOK 52 BOOK 32 BOOK 34 BOOK 33 BOOK 25 BOOK 35 BOOK 38 BOOK 37 BOOK 39

95-02 87-03