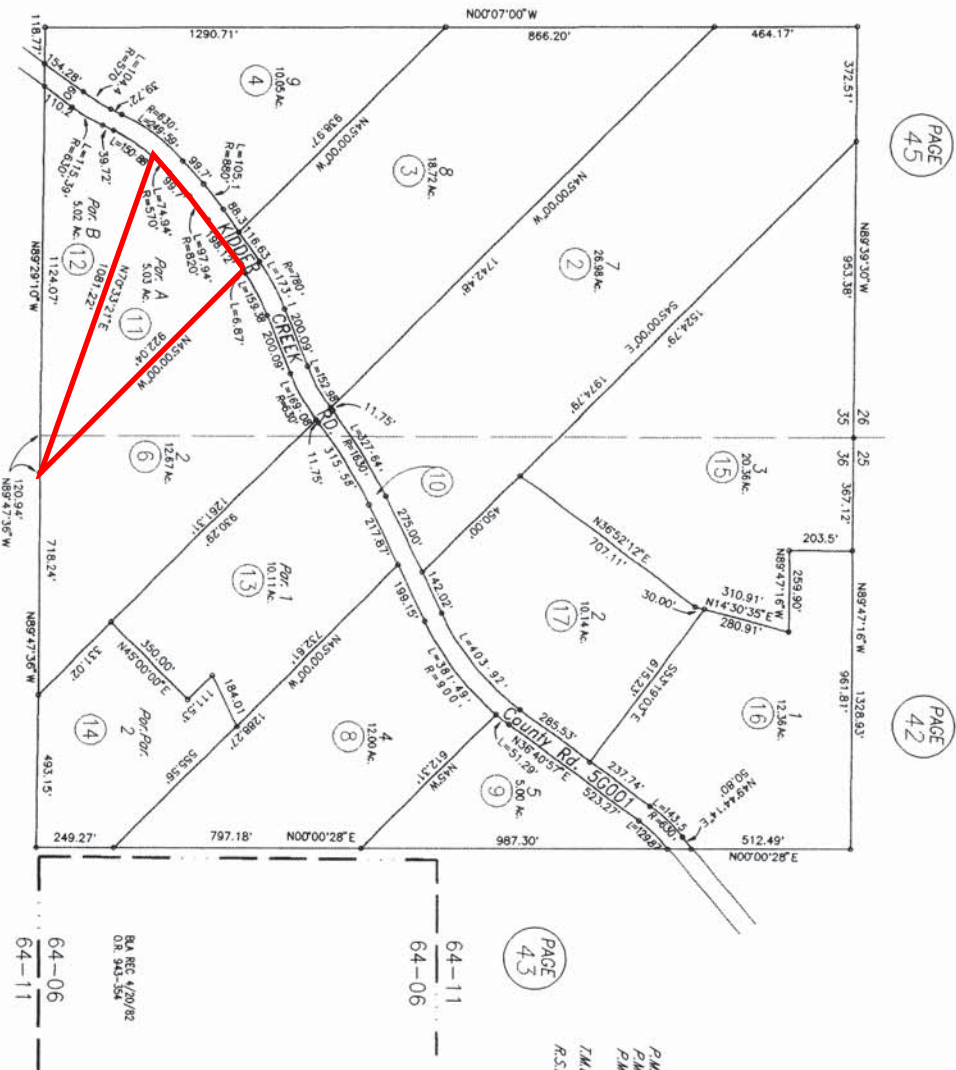


KIDDER CREEK ACRES SUBDIVISION TRACT 1034

Tax Area Code
64-11

24-58

BEING A PART OF SECTIONS 35 & 36, T43N, R10W, N.D.M.
RECORDED MARCH 16, 1978 IN TOWN MAP BOOK 6, PG. 51



PAGE 45

PAGE 42

PAGE 45

PAGE 43

PAGE 45

PAGE 44

64-11
64-06
64-11

P.M.B. 8-145
P.M.B. 9-122
P.M.B. 11-115
T.M.B. 6-51
R.S.B. 17-158



NOTE: This map is for assessment purposes only and is not for the intent of interpreting legal boundary rights, zoning regulations and/or legality of land division laws.

Siskiyou County Assessor's Office
1996 Roll
AUTOCAD
JULY 1996

CAD/SBU