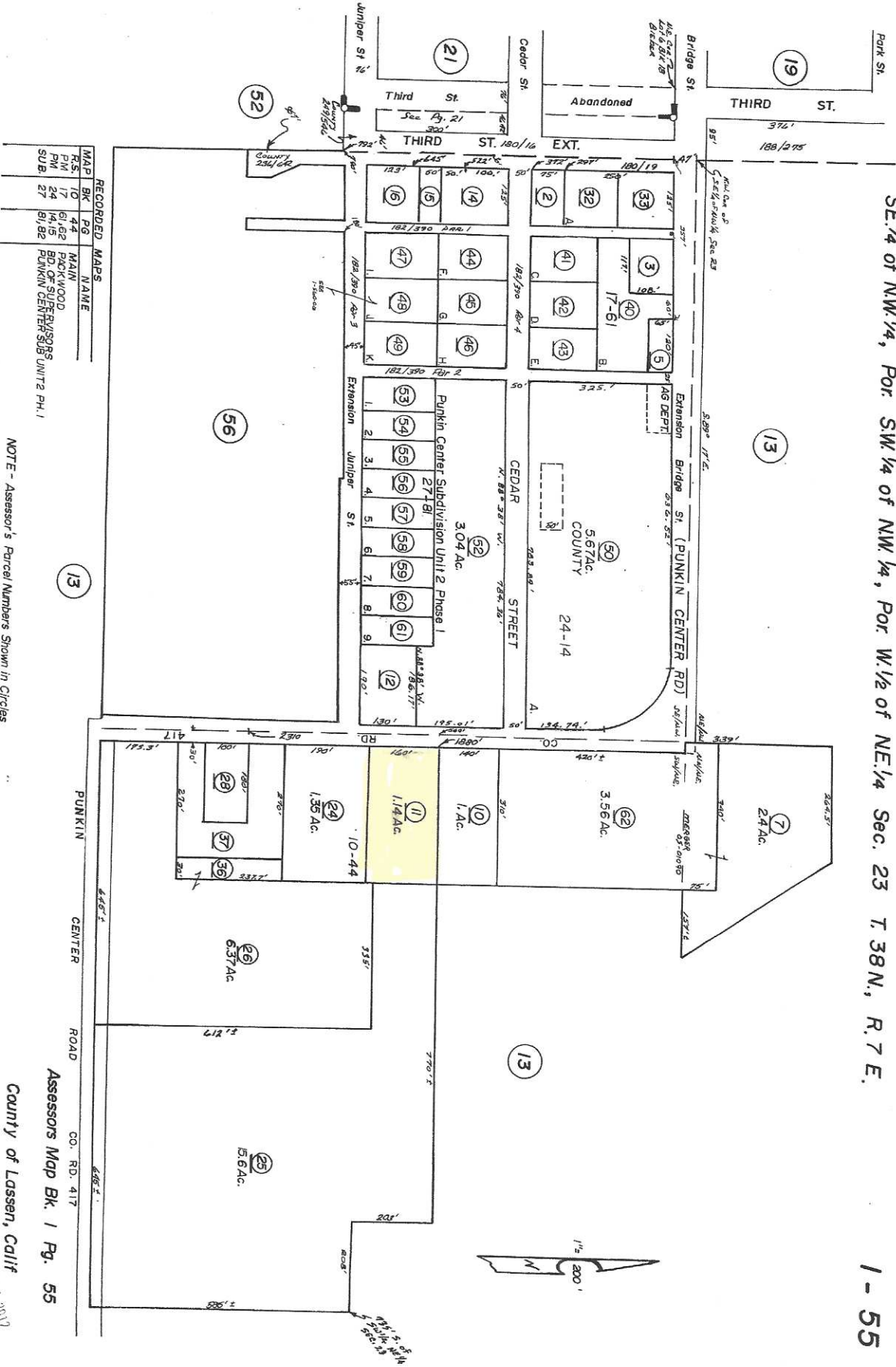


Acreage listed is prepared and checked with available information and is for Assessor's Office use only.

SE 1/4 of NW 1/4, For SW 1/4 of NW 1/4, For W 1/2 of NE 1/4 Sec. 23 T. 38 N., R. 7 E.

1 - 55



RECORDED MAPS		
MAP	BK	PG
R.S.	10	44
P.M.	17	61, 62
P.M.	24	14, 15
SUB.	27	81, 82

NOTE - Assessor's Parcel Numbers Shown in Circles

Assessors Map Bk. 1 Pg. 55  
County of Lassen, Calif

NOV 2 1 2012