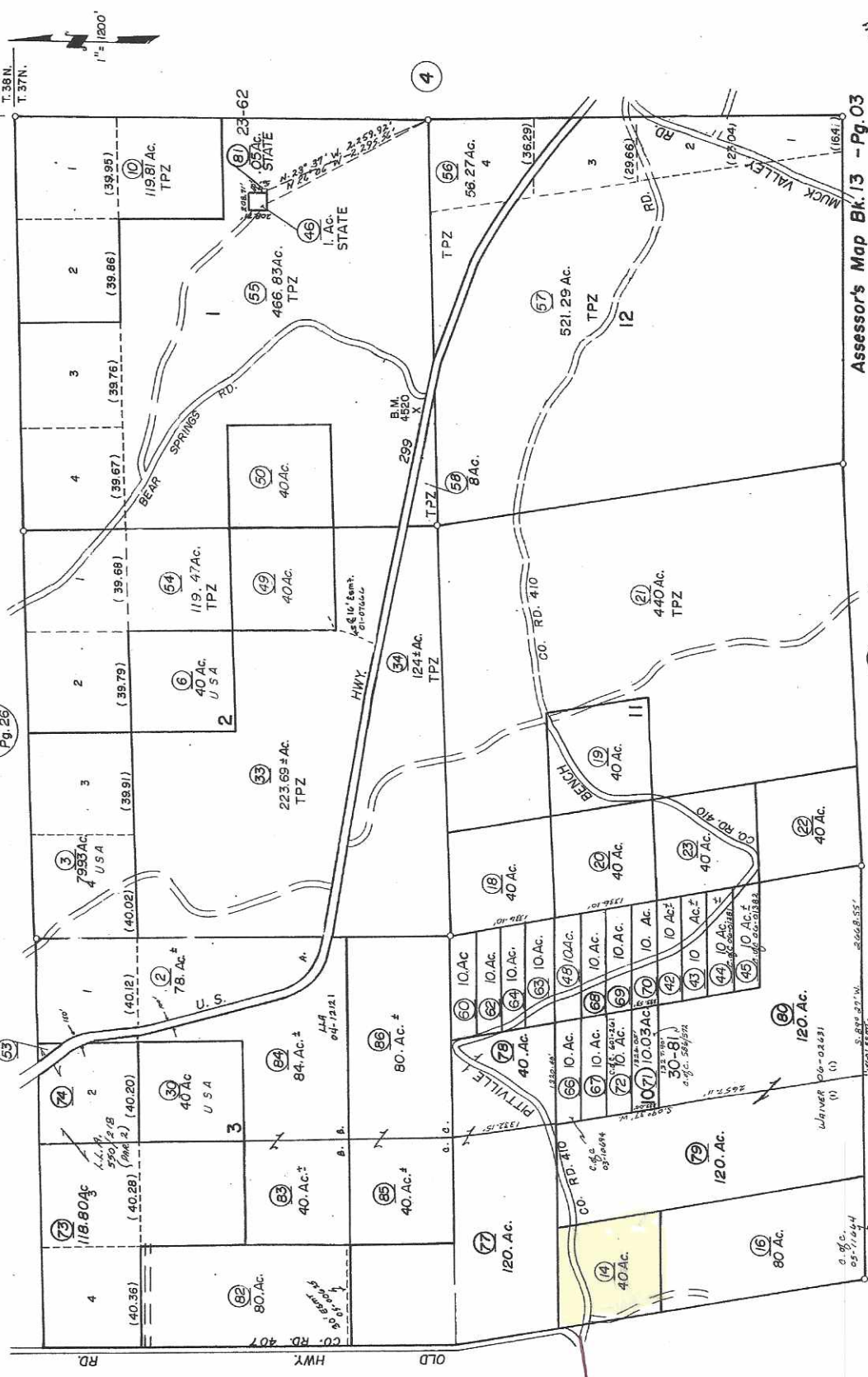


Acres listed is prepared and checked with available information and is for Assessor's Office use only.

T. 37 N., R. 6 E., M.D.B. & M.

13-03
R. 6 E.
T. 37 N.



↑
TO
HWY 299

↑
TO
McArthur

Assessor's Map Bk. 13 - Pg. 03
County of Lassen, Calif.
SEP 13 2011

NOTE - Assessor's Block Numbers Shown in Ellipses.
Assessor's Parcel Numbers Shown in Circles.

RS MAP BK 33 PG. 62 CITIZENS UTILITIES CO.
RS MAP BK. 30 PG. 81 FULLER, et al