

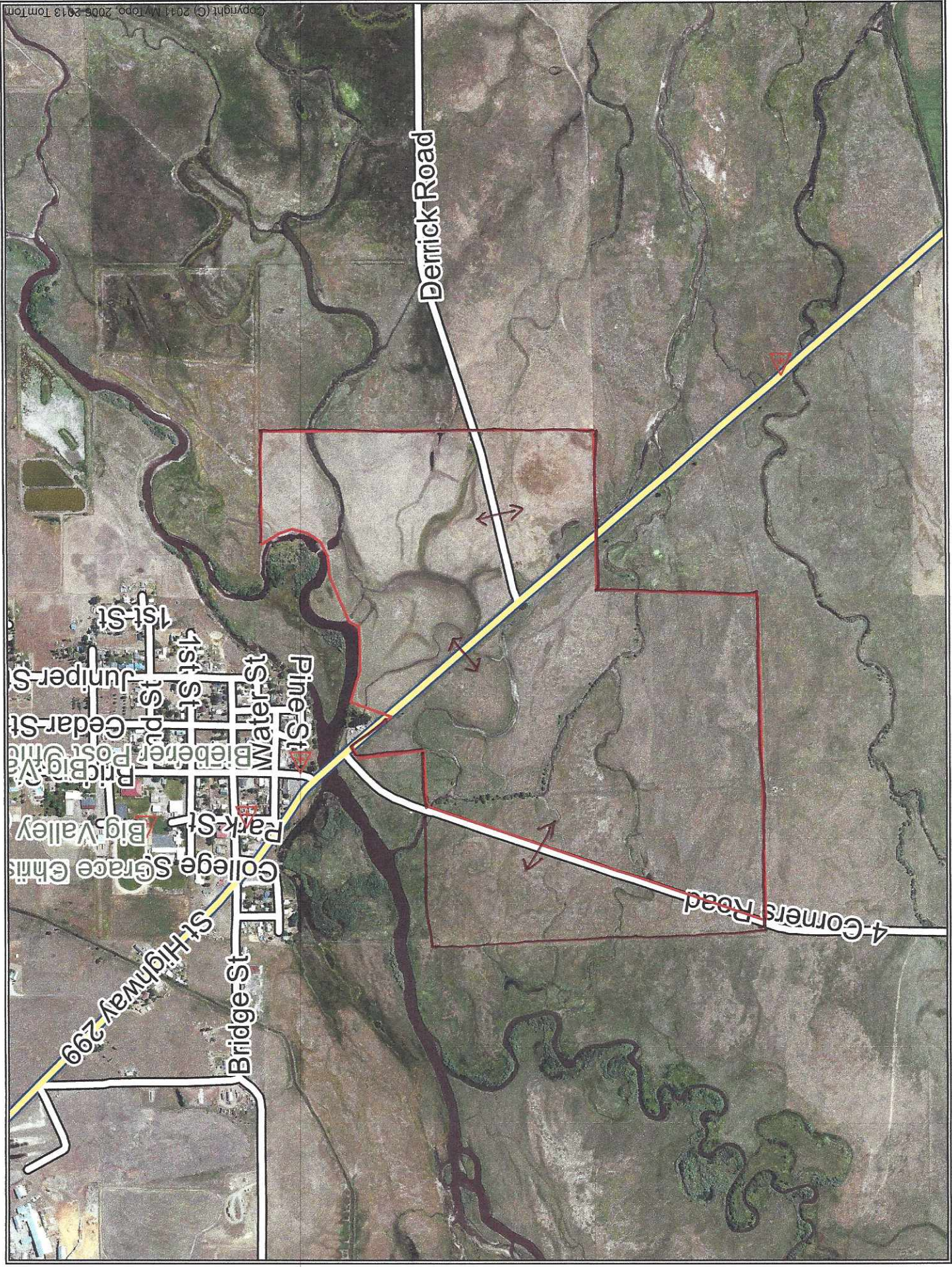


Valley Cutoff Road

Bunselmeier
Pumpkin Co

Pumpkin Center Road

HSH



Derrick Road

4-Corners Road

1st St

1st St

1st St

1st St

1st St

1st St

1st St

1st St

1st St

1st St

1st St

1st St

1st St

1st St

1st St

1st St

1st St

1st St

1st St

Juniper St

Juniper St

Juniper St

Juniper St

Juniper St

Juniper St

Juniper St

Juniper St

Juniper St

Juniper St

Juniper St

Juniper St

Juniper St

Juniper St

Juniper St

Juniper St

Juniper St

Juniper St

Juniper St

Juniper St

Cedar St

Cedar St

Cedar St

Cedar St

Cedar St

Cedar St

Cedar St

Cedar St

Cedar St

Cedar St

Cedar St

Cedar St

Cedar St

Cedar St

Cedar St

Cedar St

Cedar St

Cedar St

Cedar St

Cedar St

Pine St

Pine St

Pine St

Pine St

Pine St

Pine St

Pine St

Pine St

Pine St

Pine St

Pine St

Pine St

Pine St

Pine St

Pine St

Pine St

Pine St

Pine St

Pine St

Pine St

Water St

Water St

Water St

Water St

Water St

Water St

Water St

Water St

Water St

Water St

Water St

Water St

Water St

Water St

Water St

Water St

Water St

Water St

Water St

Water St

College St

College St

College St

College St

College St

College St

College St

College St

College St

College St

College St

College St

College St

College St

College St

College St

College St

College St

College St

College St

St Highway 299

St Highway 299

St Highway 299

St Highway 299

St Highway 299

St Highway 299

St Highway 299

St Highway 299

St Highway 299

St Highway 299

St Highway 299

St Highway 299

St Highway 299

St Highway 299

St Highway 299

St Highway 299

St Highway 299

St Highway 299

St Highway 299

St Highway 299

Bridge St

Bridge St

Bridge St

Bridge St

Bridge St

Bridge St

Bridge St

Bridge St

Bridge St

Bridge St

Bridge St

Bridge St

Bridge St

Bridge St

Bridge St

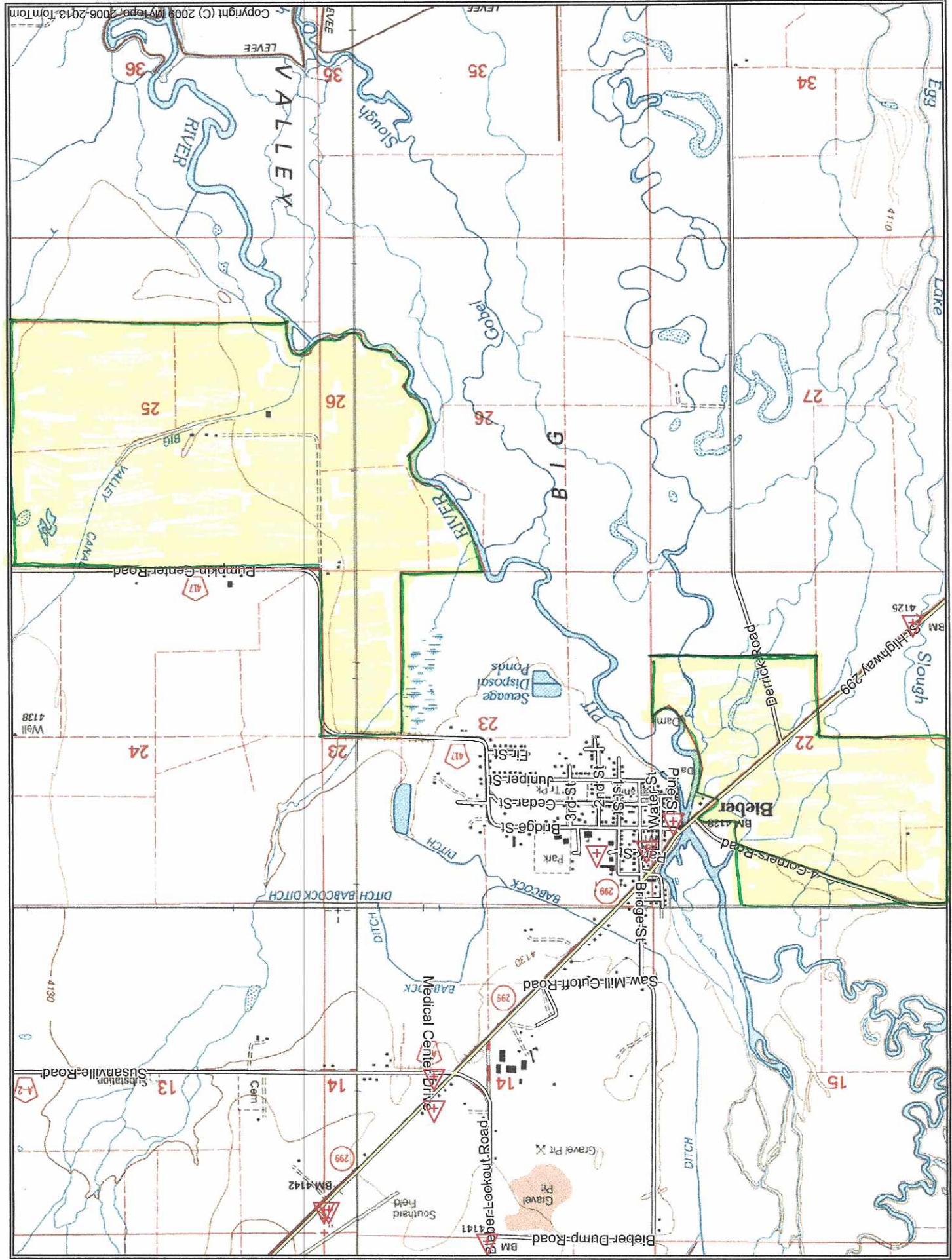
Bridge St

Bridge St

Bridge St

Bridge St

Bridge St



Copyright (C) 2009 (M) Topo 2006-2013 TomTom

BUNSELWEIR RD. CO. RD. 440

1" = 120'

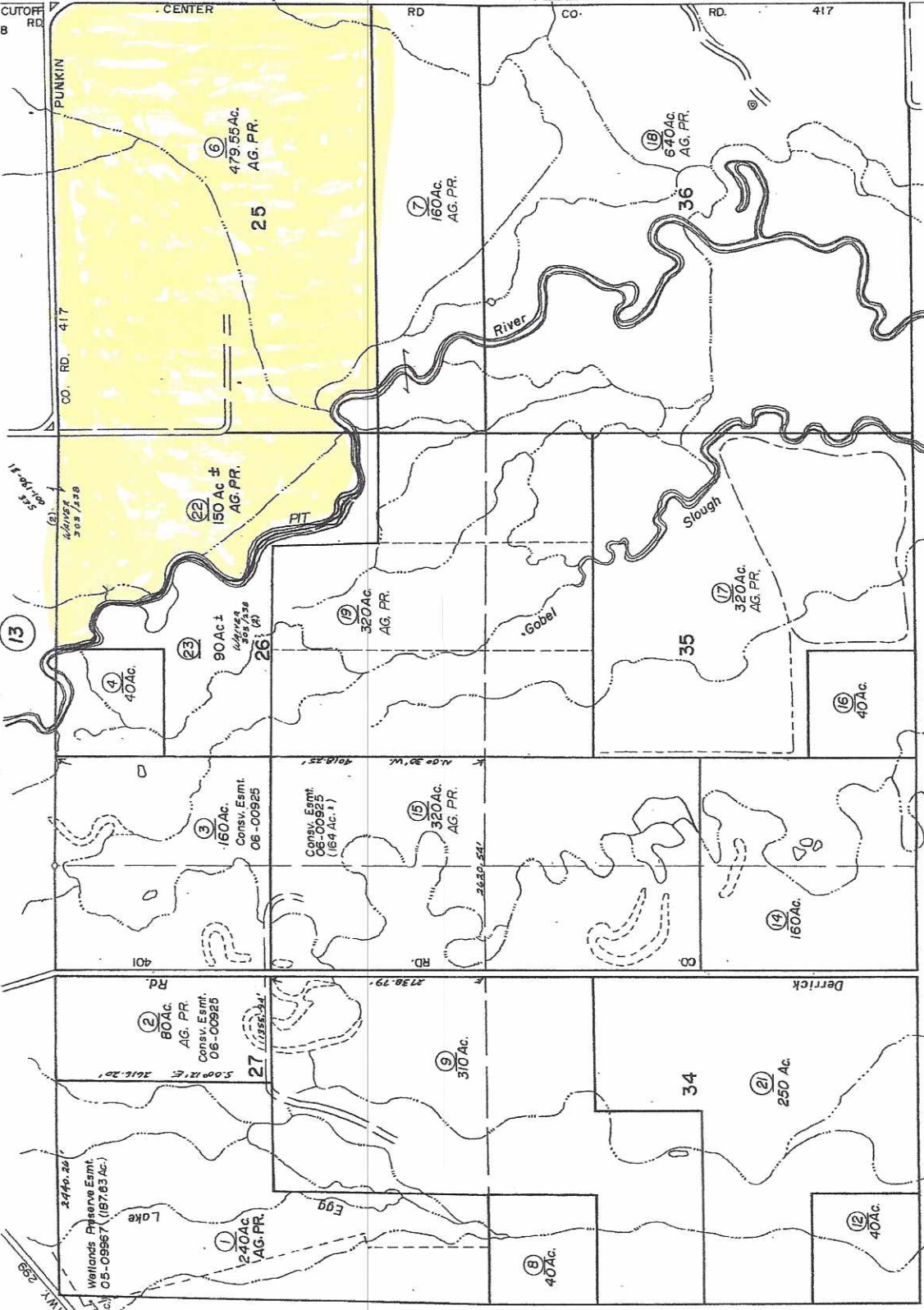
BK. 3

LIVEBSON LANE CO. RD. 432

T. 38N. T. 37N.

Assessor's Map Bk. 1 - Pg. 53

County of Lassen, Calif.



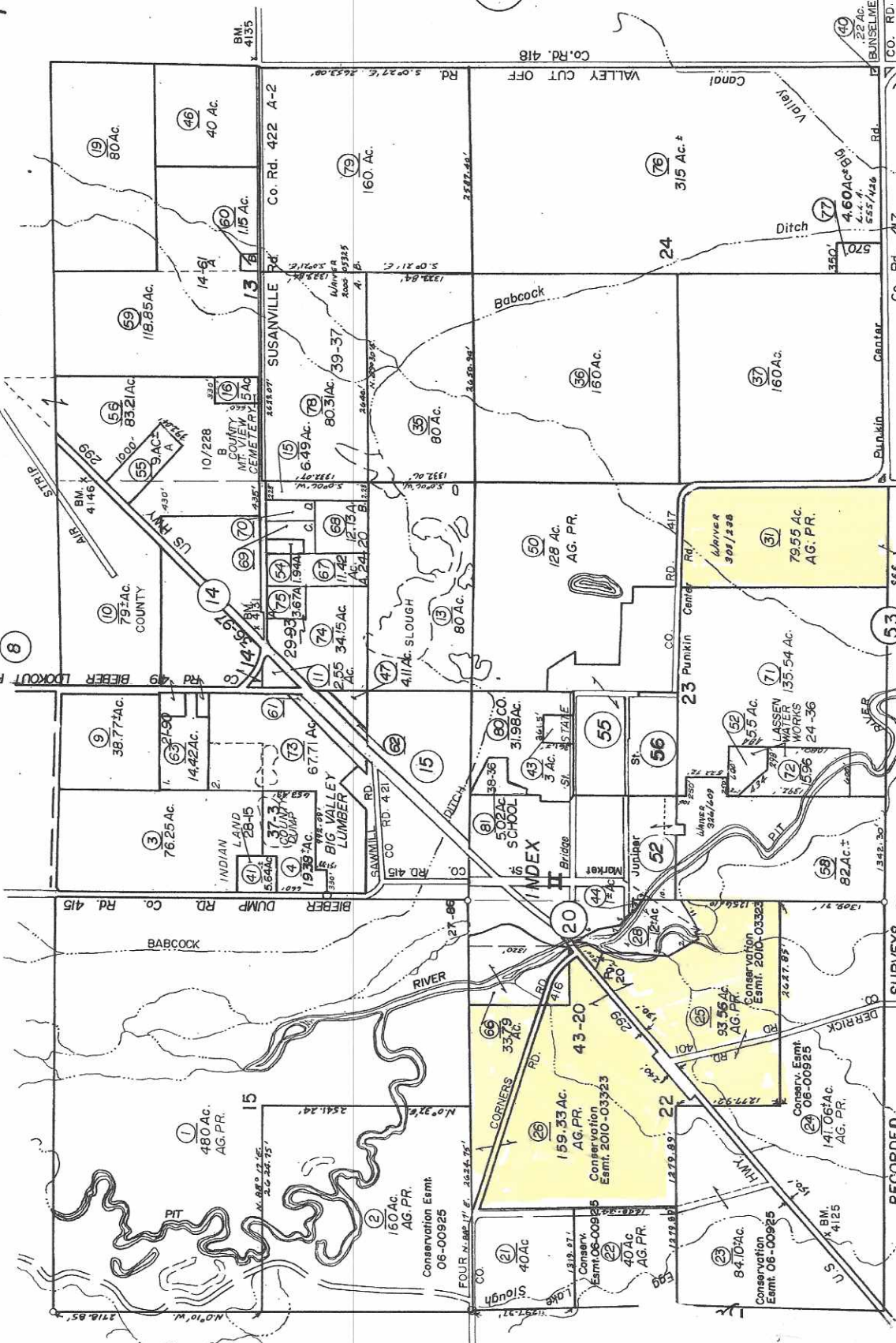
Acreage listed is prepared and checked with available information and is for Assessor's Office use only

BK. 13 Pg. 5

Information listed is prepared and check with available acreage listed in assessor's Office use only.

11

1. S. 704.00' W. 100.00'
2. N. 239.00' W. 480.00'
3. N. 207.40' E. 480.00'
4. N. 244.30' E. 480.00'
5. N. 044.10' E. 235.00'
6. S. 207.30' E. 190.00'
7. S. 117.10' E. 308.00'
8. S. 504.00' E. 300.00'
9. E. 217.00'
10. S. 552.00' W. 499.00'
11. S. 552.00' W. 100.00'
12. N. 181.31' W. 100.00'



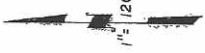
MAP BK PG	NAME	MAP BK PG	NAME
R.S. 9	26 MAIN INDUSTRIES INC.	MAP 25	25 BRIDGEMAN VALLEY LUMBER CO.
P.M. 10	228 BIDWELL	R.S. 33	33 CALIF. TRANSPORTATION
P.M. 14	61 SURPRISE VALLEY ELECT.	R.S. 35	35 LASSEN CO. SCHOOL DIST.
P.M. 21	50 BIG VALLEY LUMBER CO.	R.S. 38	38 LASSEN CO. SCHOOL DIST.
		R.S. 39	39 LASSEN CO. SCHOOL DIST.
		R.S. 40	40 LASSEN CO. SCHOOL DIST.

Assessor's Map Bk. 1 - Pg. 13
County of Lassen, Calif.

NOTE: Assessor's Parcel Numbers in Circles

BK. 3
PG. 9

1" = 120'



Co. Rd. 418
BUNSELMEIR RD
Co. Rd. 440

BM. 4135

Co. Rd. 422 A-2

SUSANVILLE

Co. Rd. 417

Center

Co. Rd. 417

Punkin

Center Rd.

Co. Rd. 417

Valley

Canal

Valley CUT OFF

Rd

5.0275' 2553.00'

3332.41'

315 Ac.±

76

Ditch

350'

527'

4.60 Ac.±

77

555/426

22 Ac.

40

Co. Rd. 418

Center

Co. Rd. 417

Punkin

Center Rd.

Co. Rd. 417

19

80 Ac.

14-6

13

118.85 Ac.

59

10/228

1000-

832.1 Ac.

56

10/228

10/228

115 Ac.

60

6.49 Ac.

15

80.31 Ac.

78

39-37

80.31 Ac.

79

160 Ac.

35

80 Ac.

36

150 Ac.

37

160 Ac.

38

128 Ac.

50

AG. PR.

31

79.55 Ac.

31

AG. PR.

9

38.77 Ac.

14

14.42 Ac.

63

78.25 Ac.

3

INDIAN LAND

28-B

37

1938 Ac.

4

1938 Ac.

15

67.71 Ac.

73

29.93

5.67 A

75

11.42

12.15 A

69

34.15 Ac.

74

4.24

20

4.11 Ac.

47

4.11 Ac.

47

80 Ac.

13

AG. PR.

50

128 Ac.

50

8

79± Ac.

10

832.1 Ac.

55

10/228

10/228

115 Ac.

60

6.49 Ac.

15

80.31 Ac.

78

39-37

80.31 Ac.

79

160 Ac.

35

80 Ac.

36

150 Ac.

37

160 Ac.

38

128 Ac.

50

AG. PR.

31

79.55 Ac.

31

AG. PR.

52

135.54 Ac.

71

LASSEN WATER

WORKS

15

480 Ac.

AG. PR.

1

150 Ac.

AG. PR.

2

159.33 Ac.

AG. PR.

25

Conservation

Esmt. 2010-03923

21

40 Ac.

AG. PR.

22

Conserv.

Esmt. 06-00925

23

84.10 Ac.

Conservation

Esmt. 06-00925

24

141.06 Ac.

AG. PR.

25

93.55 Ac.

AG. PR.

26

Conservation

Esmt. 2010-03322

27

1277.92'

28

1277.92'

29

9

38.77 Ac.

14

14.42 Ac.

63

78.25 Ac.

3

INDIAN LAND

28-B

37

1938 Ac.

4

1938 Ac.

15

67.71 Ac.

73

29.93

5.67 A

75

11.42

12.15 A

69

34.15 Ac.

74

4.24

20

4.11 Ac.

47

4.11 Ac.

47

80 Ac.

13

AG. PR.

50

128 Ac.

50

8

79± Ac.

10

832.1 Ac.

55

10/228

10/228

115 Ac.

60

6.49 Ac.

15

80.31 Ac.

78

39-37

80.31 Ac.

79

160 Ac.

35

80 Ac.

36

150 Ac.

37

160 Ac.

38

128 Ac.

50

AG. PR.

31

79.55 Ac.

31

AG. PR.

52

135.54 Ac.

71

LASSEN WATER

WORKS