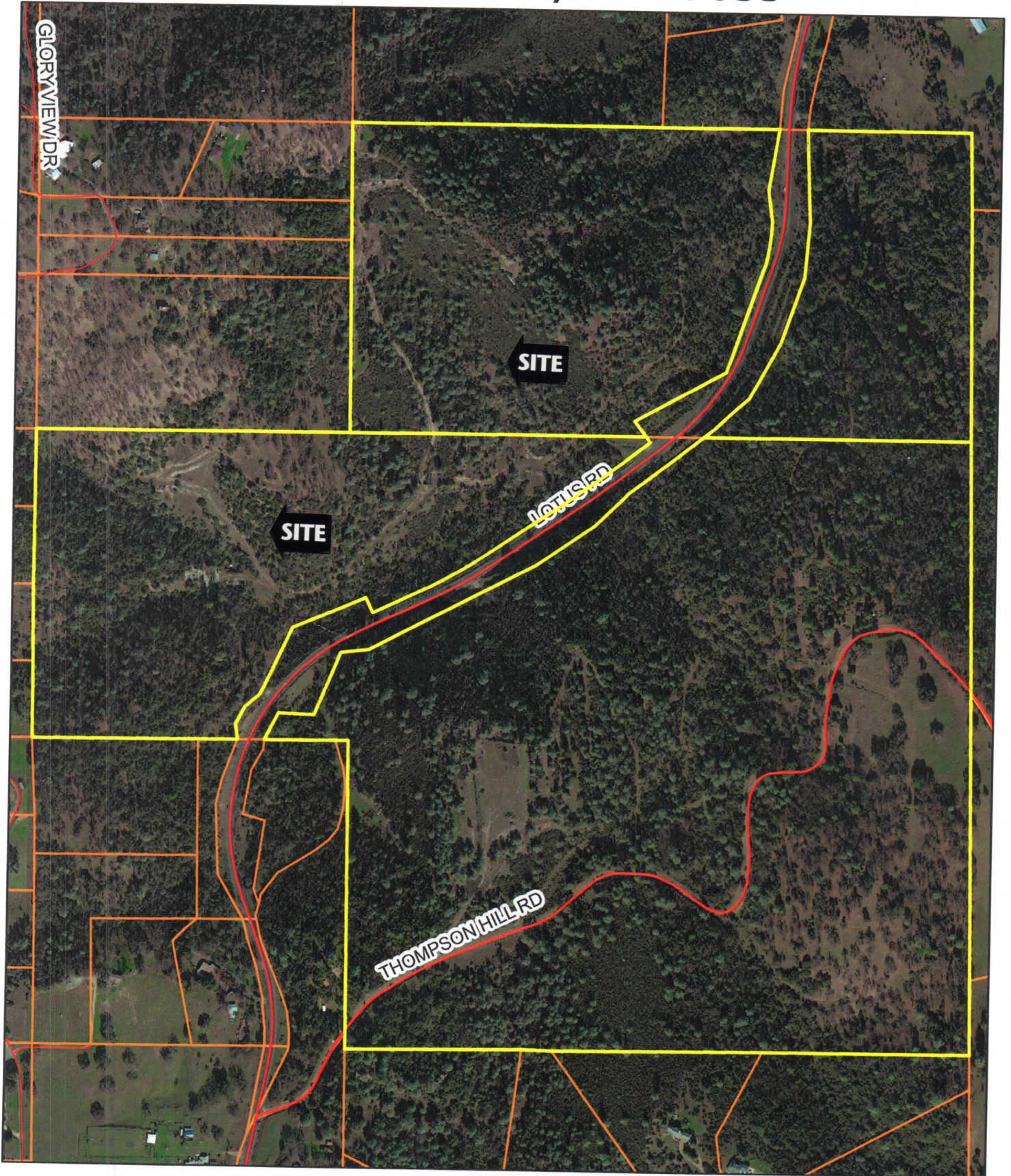


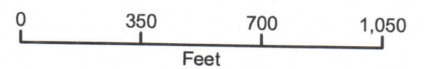
APN 10519033, 10519035



Aerials Copyright 2003,2004,2006,2007,2011 All Rights Reserved

Disclaimer: This depiction was compiled from unverified public and private sources and is illustrative only. No representation is made as to accuracy of this information. Parcel boundaries are particularly unreliable. Users make use of this depiction at their own risk.

Printed on 9/6/2013 from El Dorado County Surveyor's Office



Map displayed in State Plane Coordinate System (NAD 1983 California Zone 2, feet)