

NOTE  
This map was prepared for assessment purposes only, and is not  
intended to be used for any other purpose. It is not a  
guarantee of accuracy and is not a warranty of any kind.  
Other than the information shown on this map, no other  
information is provided from recorded documents and local government records.

| DATE       | REVISED   | REVISED   | REVISED   |
|------------|-----------|-----------|-----------|
| 10-13-2003 | 7-31-2002 | 7-31-2001 | 7-31-2000 |
| 10-13-2003 | 7-31-2002 | 7-31-2001 | 7-31-2000 |
| 10-13-2003 | 7-31-2002 | 7-31-2001 | 7-31-2000 |
| 10-13-2003 | 7-31-2002 | 7-31-2001 | 7-31-2000 |

Assessor's Book Numbers Shown in Boxes  
Assessor's Parcel Numbers Shown in Circles  
Assessor's Map Numbers Shown in Squares

Assessor's Bk. 3, Pg. 05  
County of Sierra, CA

Copyright © 2003 Sierra County Assessor's Office. All Rights Reserved

# Approximate Tentative Parcel Map/Lot Line Adjustment

Sierra County APN 003-050-037

AKA: 55 Johnson Way  
Downieville

drawn by  
Marlene Boggs  
from map prepared by  
DMac Engineering  
Downieville

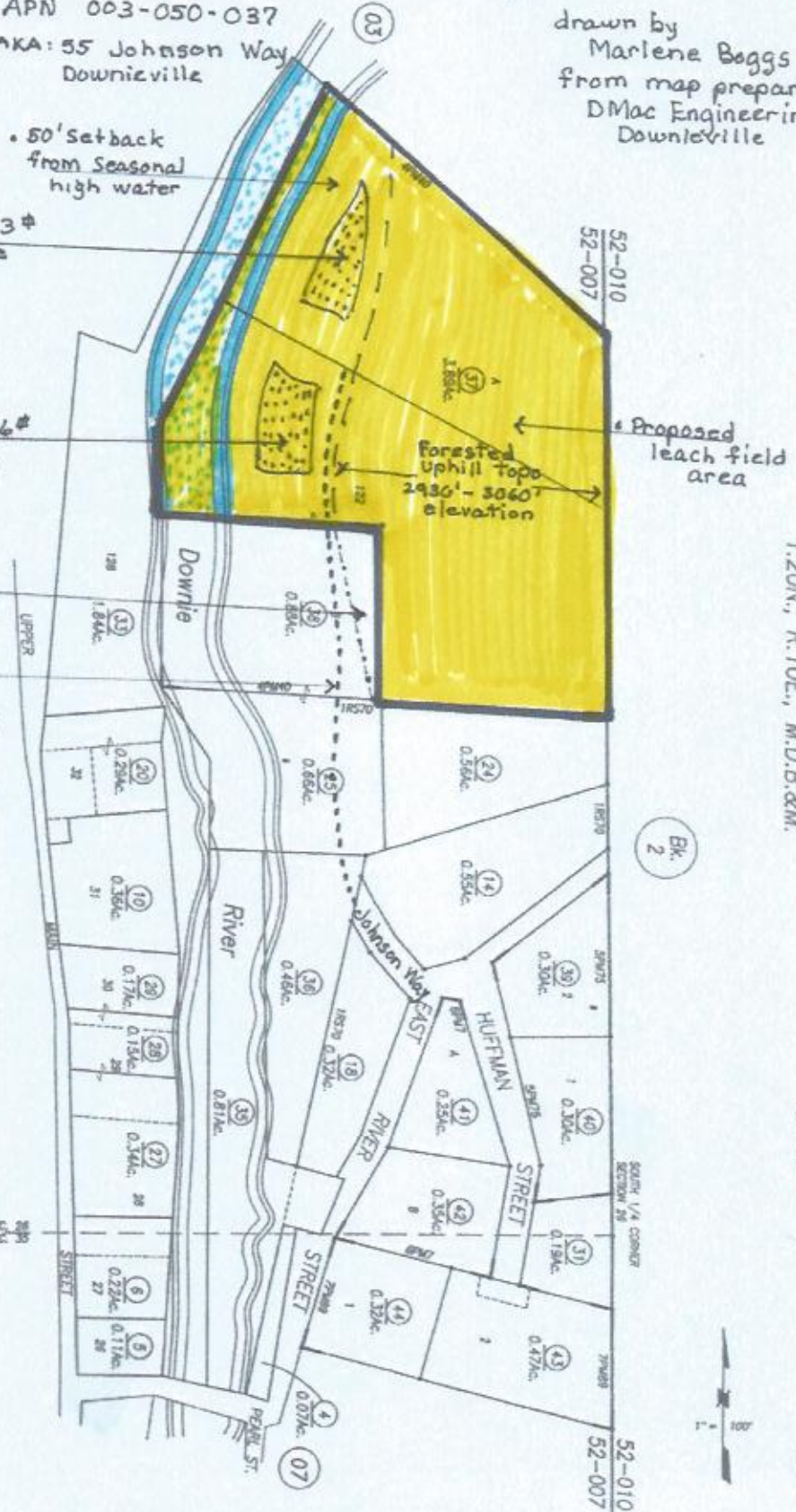
Parcel 1  
Building Envelope 3823 #  
255.59' river frontage

Parcel 2  
Building Envelope 5336 #  
206.08' river frontage

Proposed lot line adjustment  
to allow for 2-2ac parcels

30' Road & Utility  
Easement

Public water  
& electricity  
at property  
line



TOWN OF DOWNIEVILLE  
T.20N., R.10E., M.D.B.&M.

Tax Rate Area  
52-007

3-05

NOTES:  
This map was prepared for informational purposes only, and is not  
guaranteed to be accurate. It is based on information provided by  
Sierra County Assessor's Office. It is not intended to be used for  
any other purpose. The Assessor's Office is not responsible for  
any errors or omissions on this map. The Assessor's Office is not  
responsible for any damages or losses resulting from the use of this  
map. The Assessor's Office is not responsible for any damages or  
losses resulting from the use of this map.

Assessor's Book 3, Pg. 05  
County of Sierra, CA

|          |            |             |
|----------|------------|-------------|
| REVISION | DATE       | DESCRIPTION |
| REVISED  | 07/11/2004 | REVISED     |
| REVISED  | 07/28/2004 | REVISED     |
| REVISED  | 07/28/2004 | REVISED     |
| REVISED  | 07/28/2004 | REVISED     |

Copyright © 2004, Sierra County Assessor's Office, All Rights Reserved.