

Plumas National Forest Route Inventory Map Reconnaissance Peak



Jul 13, 2005

0 0.25 0.5 1 Mile



ROADS

- State/County Roads
- National Forest System (NFS) Roads Maintenance Level
 - 1 - Basic Custodial Care
 - 2 - High Clearance Vehicles
 - 3 - Suitable for Passenger Vehicles
 - 4 & 5 - Moderate-High User Comfort

TRAILS - NATIONAL FOREST SYSTEM (NFS)

- NFS Trails - Non-Motorized Use Only
- Designated Summer OHV Routes

UNAUTHORIZED/UNCLASSIFIED ROUTES

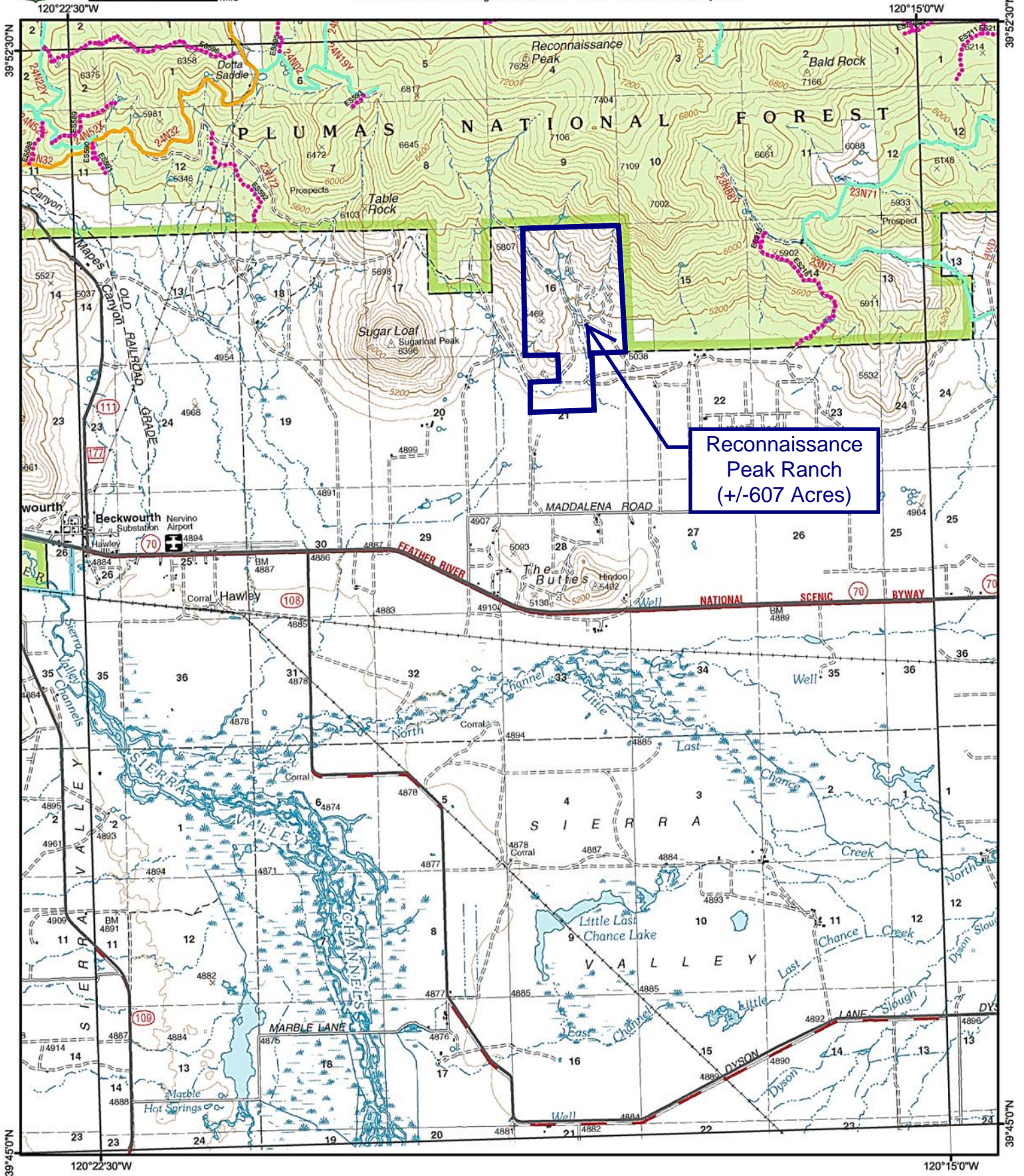
- Unauthorized/Unclassified Routes
- Routes Provided By Users

AREAS

- OHV Use Areas
- Closed to Vehicles
- Vehicle Restriction Area

LAND OWNERSHIP

- National Forest Land



Reconnaissance Peak Ranch
(+/-607 Acres)