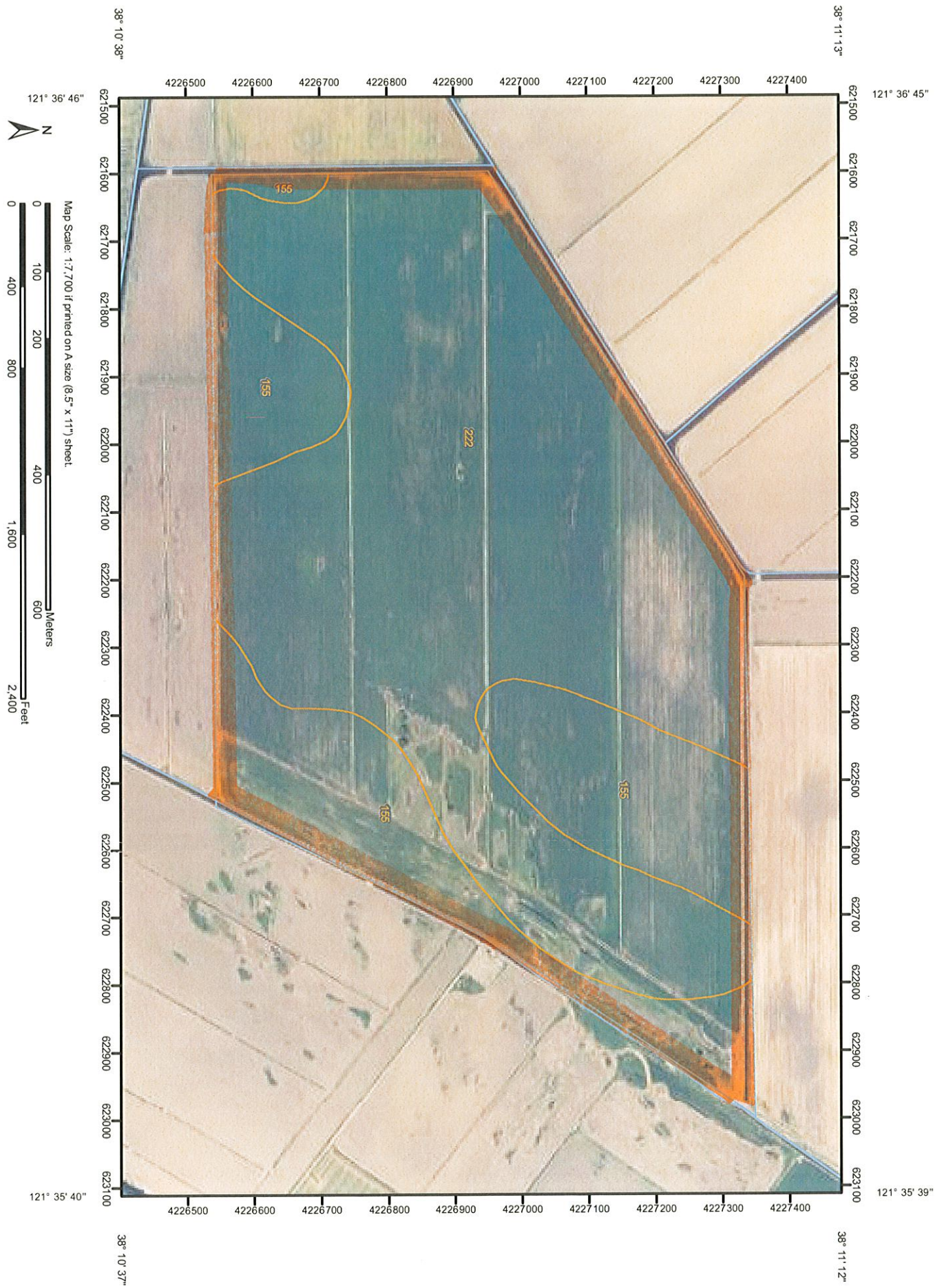


Soil Map—Sacramento County, California



## Map Unit Legend

<b>Sacramento County, California (CA067)</b>			
<b>Map Unit Symbol</b>	<b>Map Unit Name</b>	<b>Acres in AOI</b>	<b>Percent of AOI</b>
155	Gazwell mucky clay, partially drained, 0 to 2 percent slopes	59.7	30.3%
222	Scribner clay loam, partially drained, 0 to 2 percent slopes	137.5	69.7%
<b>Totals for Area of Interest</b>		<b>197.2</b>	<b>100.0%</b>

## Sacramento County, California

### 155—Gazwell mucky clay, partially drained, 0 to 2 percent slopes

#### Map Unit Setting

*Elevation:* 20 feet

*Mean annual precipitation:* 15 inches

*Mean annual air temperature:* 59 degrees F

*Frost-free period:* 275 to 300 days

#### Map Unit Composition

*Gazwell and similar soils:* 85 percent

*Minor components:* 15 percent

#### Description of Gazwell

##### Setting

*Landform:* Backswamps

*Landform position (two-dimensional):* Toeslope

*Landform position (three-dimensional):* Dip

*Down-slope shape:* Linear

*Across-slope shape:* Linear

*Parent material:* Alluvium

##### Properties and qualities

*Slope:* 0 to 2 percent

*Depth to restrictive feature:* More than 80 inches

*Drainage class:* Very poorly drained

*Capacity of the most limiting layer to transmit water*

*(Ksat):* Moderately high to high (0.57 to 1.98 in/hr)

*Depth to water table:* About 0 inches

*Frequency of flooding:* Rare

*Frequency of ponding:* None

*Available water capacity:* Very high (about 13.7 inches)

##### Interpretive groups

*Land capability classification (irrigated):* 3w

*Land capability (nonirrigated):* 3w

##### Typical profile

*0 to 30 inches:* Mucky clay

*30 to 36 inches:* Mucky silty clay

*36 to 60 inches:* Muck

#### Minor Components

##### Egbert

*Percent of map unit:* 4 percent

*Landform:* Flood plains

*Landform position (two-dimensional):* Toeslope

*Landform position (three-dimensional):* Tread

**Rindge**

*Percent of map unit: 4 percent*  
*Landform: Marshes*

**Sailboat**

*Percent of map unit: 3 percent*  
*Landform: Levees*

**Scribner**

*Percent of map unit: 3 percent*  
*Landform: Backswamps*

**Clayey below 20in. unnamed**

*Percent of map unit: 1 percent*

**Data Source Information**

Soil Survey Area: Sacramento County, California  
Survey Area Data: Version 10, Aug 31, 2009

## Sacramento County, California

### 222—Scribner clay loam, partially drained, 0 to 2 percent slopes

#### Map Unit Setting

*Elevation:* 10 feet

*Mean annual precipitation:* 13 to 16 inches

*Mean annual air temperature:* 59 to 61 degrees F

*Frost-free period:* 260 to 300 days

#### Map Unit Composition

*Scribner and similar soils:* 85 percent

*Minor components:* 15 percent

#### Description of Scribner

##### Setting

*Landform:* Backswamps

*Landform position (two-dimensional):* Toeslope

*Landform position (three-dimensional):* Dip

*Down-slope shape:* Linear

*Across-slope shape:* Linear

*Parent material:* Alluvium

##### Properties and qualities

*Slope:* 0 to 2 percent

*Depth to restrictive feature:* More than 80 inches

*Drainage class:* Poorly drained

*Capacity of the most limiting layer to transmit water (Ksat):* Moderately high (0.20 to 0.57 in/hr)

*Depth to water table:* About 0 inches

*Frequency of flooding:* Rare

*Frequency of ponding:* None

*Calcium carbonate, maximum content:* 5 percent

*Maximum salinity:* Nonsaline (0.0 to 2.0 mmhos/cm)

*Available water capacity:* High (about 11.1 inches)

##### Interpretive groups

*Land capability classification (irrigated):* 2w

*Land capability (nonirrigated):* 3w

##### Typical profile

*0 to 12 inches:* Clay loam

*12 to 39 inches:* Stratified silt loam to clay loam

*39 to 60 inches:* Stratified loam to silty clay loam

#### Minor Components

##### Dierssen

*Percent of map unit:* 3 percent

*Landform:* Basin floors

*Landform position (two-dimensional):* Toeslope

*Landform position (three-dimensional):* Tread

**Egbert**

*Percent of map unit: 3 percent*  
*Landform: Backswamps*

**Gazwell**

*Percent of map unit: 3 percent*  
*Landform: Backswamps*

**Sailboat**

*Percent of map unit: 3 percent*  
*Landform: Levees*

**Tinnin**

*Percent of map unit: 3 percent*

## Data Source Information

Soil Survey Area: Sacramento County, California  
Survey Area Data: Version 10, Aug 31, 2009