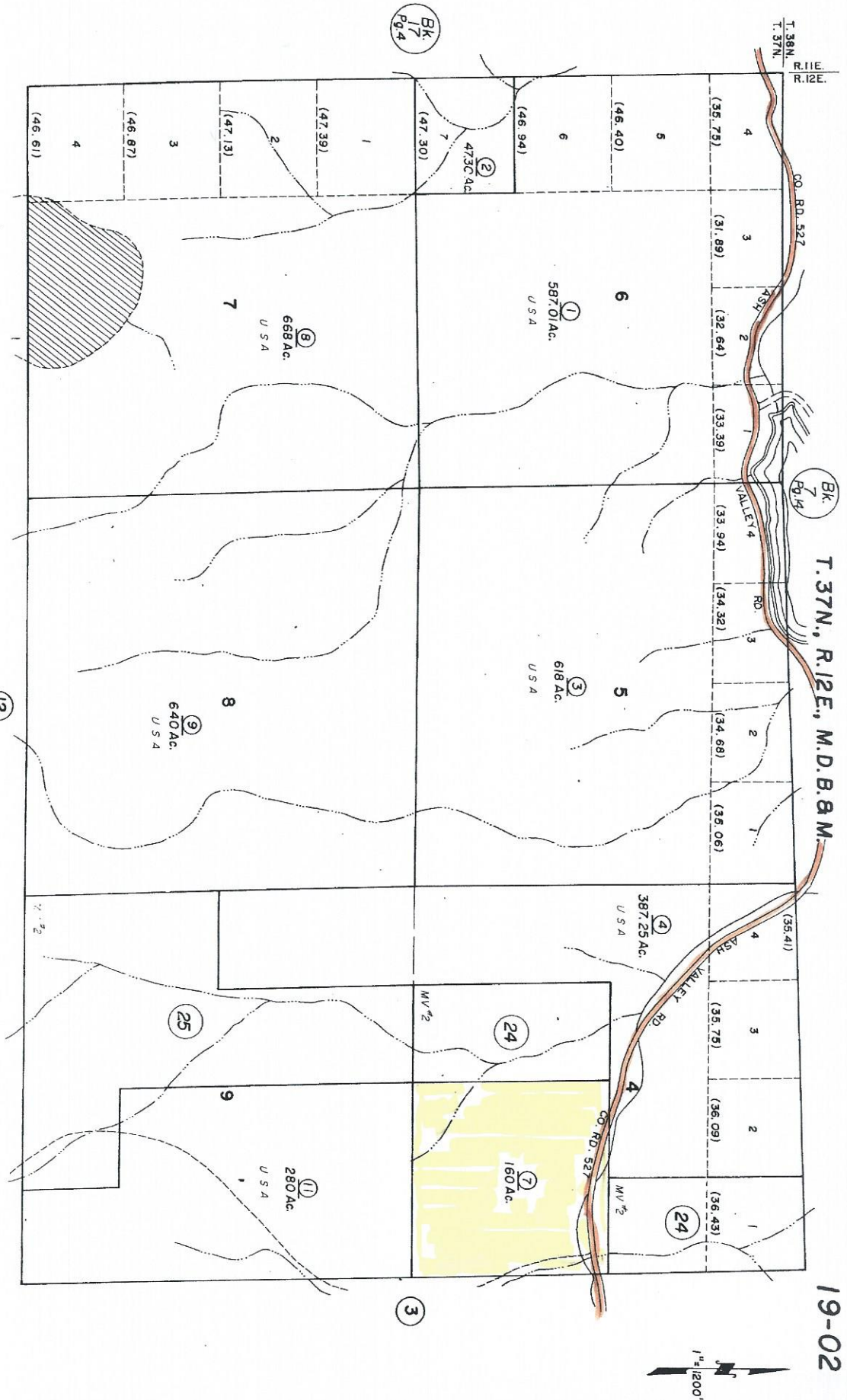


Assessor's Office use only.  
 with available information and is for  
 Assessor's Office use only.



NOTE - Assessor's Block Numbers Shown in Ellipses.  
 Assessor's Parcel Numbers Shown in Circles.

Assessor's Map BK. 19 - Pg. 02  
 County of Lassen, Calif.  
 JUL 28 1994

19-02