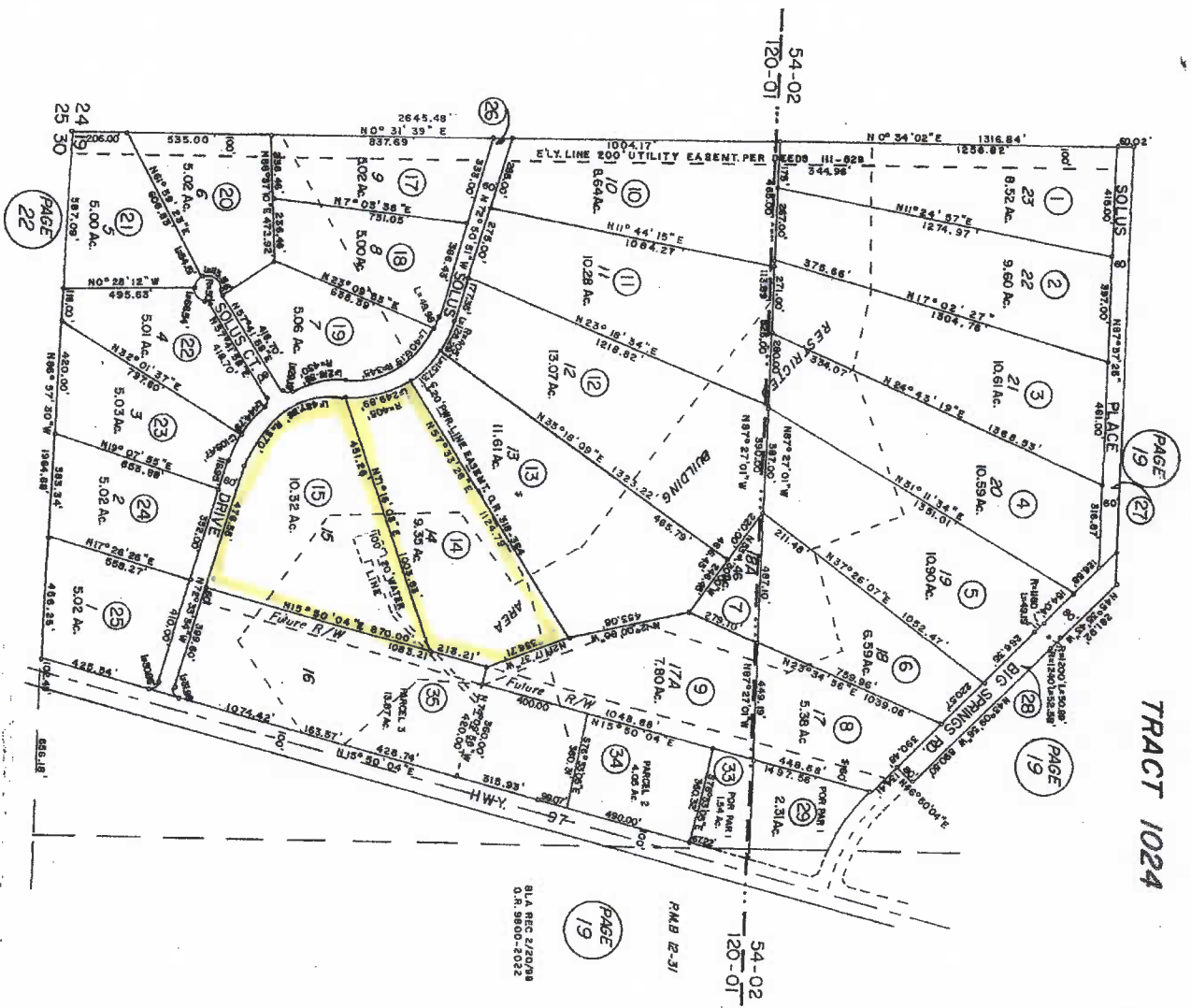


- ASSESSOR'S CATASTRAL MAP
1. THIS MAP IS PREPARED FOR ASSESSMENT PURPOSES ONLY.
 2. NO LIABILITY IS ASSUMED FOR THE ACCURACY OF THE DATA SHOWN.
 3. ASSESSOR'S PARCELS MAY NOT COMEPLY WITH LOCAL LOT-SPLIT OR BUILDING SITE ORDINANCES.

Stavrou County Assessors' Office
 January 1975

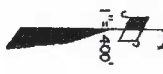


PAGE 11

TRACT 1024

Tax Area Code
 54-02
 129-01

20-51



PAGE 19

PAGE 31

B.L.A. REC. 2/20/78
 O.R. 3800-1022

RECORDED IN T.M.B. 6 PAGE 13
 ON NOV. 21, 1974