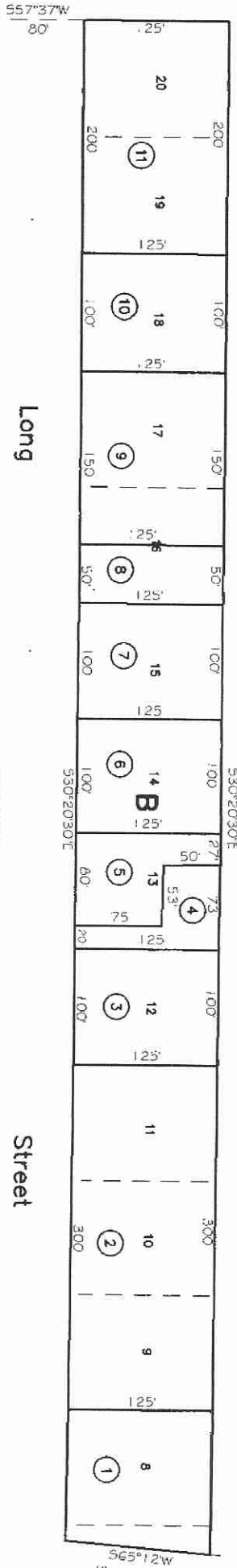


Por. NW1/4, Sec. 31, T37N, R5E

Bk. 18
54

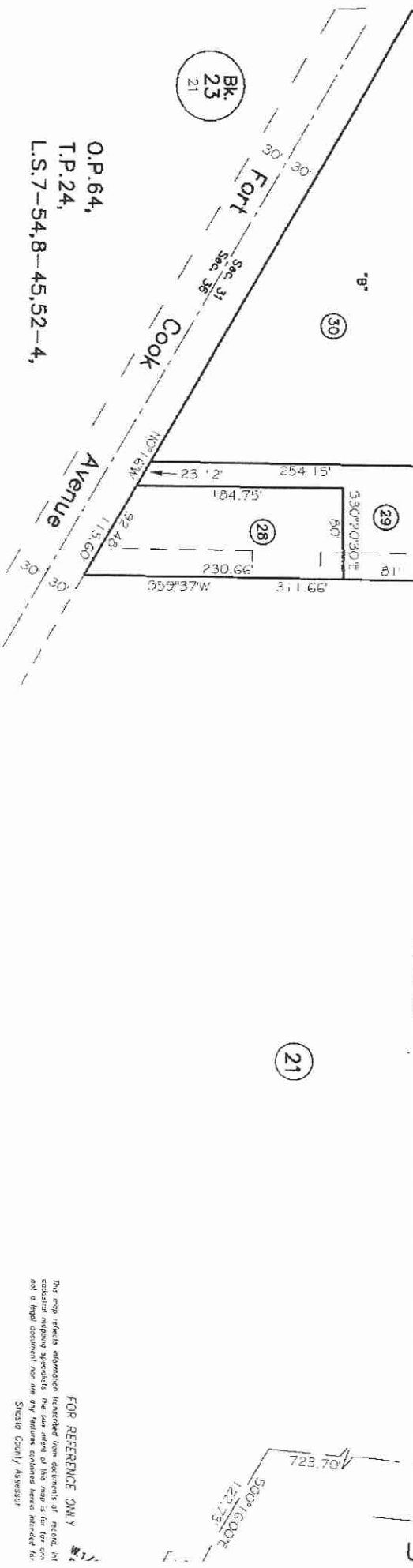


32-2



Bk. 23
21

O.P. 64,
T.P. 24,
L.S. 7-54, 8-45, 52-4,



FOR REFERENCE ONLY
This map reflects information furnished from documents of record, in
compliance with the provisions of the Statute concerning same, and does not
constitute a warranty of accuracy or a representation of fact. The State
County Assessor