



## Janine Way Vacant Land

Tehama County, California

\$97,500 | 40.53 Acres

000 Janine Way  
Corning, California

This is a large parcel in an upscale rural subdivision west of Corning. If you are looking for a place to build a nice country home with elbow room for kids, pets, and hobbies, it would be hard to find a better neighborhood. Drive by to see beautiful views from a secluded yet very accessible property served by good paved roads and protective CC&Rs.

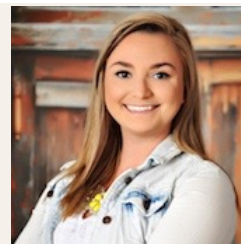


### PROPERTY HIGHLIGHTS

- 40+ acres in a rural subdivision
- Located in Corning, CA
- Nice paved road access
- CC&Rs to protect your investment
- Blank slate for your custom home, homestead or hobby farm
- Power at the street
- Privacy



**SCOTT SODER**  
Territory Manager  
BRE# 00984623  
Cell: (530) 727-7572  
[scottsoder@aol.com](mailto:scottsoder@aol.com)



**NIKKI RODRIGUEZ**  
Real Estate Agent  
BRE# 01971589  
Cell: (530) 921-6540  
[nikki@caoutdoorproperties.com](mailto:nikki@caoutdoorproperties.com)