

Sheveland Ranch Home

Napa County, California

\$519.00 | 0.04 Acres

2150 Unbridled Court
 Napa, California

South Napa's Sheveland Ranch, 2 bedroom + den/office, 2.5 bathrooms, 1600+ sf plus attached 2 car garage. Central heating & air, gas fireplace, hardwood & carpeted floors ++. Cute, low maintenance patio, balcony & easy walk to community park & playground area. Upgraded space with maple floors and birch cabinetry. Perfect to own or use as a long-term rental.

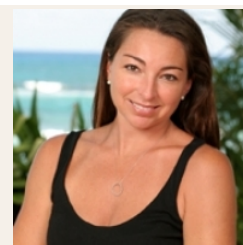


PROPERTY HIGHLIGHTS

- 3 story, 1682 sq ft 2 bedroom, 2.5 bathroom home
- Low maintenance patio & balcony
- 2 car garage
- Upgraded space with maple floors and birch cabinetry
- Close to community park & playground area
- South Napa



CECE SHORT
 Territory Manager
 BRE# 00783985
 Cell: (707) 337-0224
guidesvc@inreach.com



ROBIN SHORT
 Branch Manager
 BRE# 01890377
 Office: (707) 257-6772
 Cell: (707) 738-3006
shortnapa@gmail.com