

Hinterland Ranch

Calaveras County, California

\$1,175,000 | 161.00 Acres

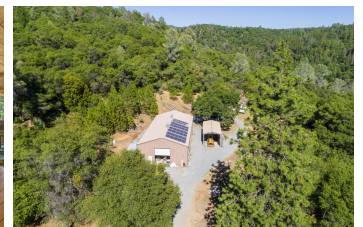
Sheep Ranch, California

Enjoy privacy and independence on this forested estate property. 4,000 sq ft custom log cabin home with wrap-around porch and spectacular views of surrounding forest and mountains. Conservation Easement provides permanent nature preserve and privacy buffer. 40' x 80' metal barn with office. 75 GPM well and 4 storage tanks on-site.



PROPERTY HIGHLIGHTS

- 160+ private forested acres
- Conservation Easement on lower parcels creating nature preserve and buffer from neighbors
- 4,000 square foot custom log-cabin designed home
- Radiant Heating Floors, and Whole House Fan
- Wrap-Around Covered Porch with Views of local mountains
- Satellite TV and Internet Service
- High-Fenced Vegetable Garden with Raised Beds
- Full independence from the utility grid with 8 KW solar, 27 KW Diesel Generator



BRUCE RENFREW
 Real Estate Agent, ALC
 BRE# 01995642
 Cell: (650) 773-1863
bruce@caoutdoorproperties.com