

Stunning Lake Berryessa View Home

Napa County, California

\$549,000.00 | 0.58 Acres

1061 Westridge Drive
 Napa, California

One-Of-A-Kind Lake Berryessa opportunity that is perfect for year round indoor/outdoor entertaining! View are spectacular, home upgrades and amenities too numerous to list. 3 car garage, plus separate 16' x 32' shop with office, loft storage, and 8ft. roll-up door. All on 1/2 acre+. Next-door contiguous lots #147 & 148 are available separately. 3 parcel package could be your 1 acre (+/-)...

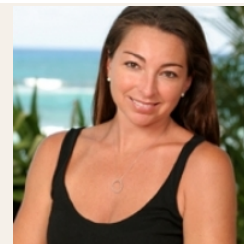


PROPERTY HIGHLIGHTS

- Lake Berryessa views
- Outdoor fireplace, kitchen and hot tub
- 3 Car attached garage
- RV/boat parking
- Upgraded kitchen and bathrooms
- Minutes to Steele Park Recreation area



CECE SHORT
 Territory Manager
 BRE# 00783985
 Cell: (707) 337-0224
guidesvc@inreach.com



ROBIN SHORT
 Branch Manager
 BRE# 01890377
 Office: (707) 257-6772
 Cell: (707) 738-3006
shortnapa@gmail.com