

## Creekside Equine Estate

Shasta County, California

\$1,350,000.00 | 14.99 Acres

22240 Silver Spur Dr.  
 Palo Cedro, California

Imagine a Virginia horse farm set down a couple miles east of central Palo Cedro, and you will get the flavor of this sophisticated yet rural estate. From the gated entrance set between stone pillars to the curving driveway lined with wildflowers and shade trees, the French Country style home in a secluded garden setting overlooking Cow Creek is just amazing. This 4,000+ sq.ft. 3 bedroo...



### PROPERTY HIGHLIGHTS

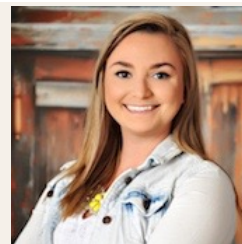
- 3 bedroom, 2.5 bathroom French County style home located on Cow Creek
- 4,050 sqft. custom home
- Custom cabinetry and wood floor inlays
- Large open concept kitchen, informal dining and living room with vaulted ceilings
- Floor to ceiling river rock fireplace and mantel
- Butler's pantry along with a walk-in pantry
- Large master suite with high ceilings, a dressing room, and outdoor patio access
- Separate den/office/formal sitting area



**SCOTT SODER**

Territory Manager  
 BRE# 00984623

Cell: (530) 727-7572  
[scottsoder@aol.com](mailto:scottsoder@aol.com)



**NIKKI RODRIGUEZ**

Real Estate Agent  
 BRE# 01971589

Cell: (530) 921-6540  
[nikki@caoutdoorproperties.com](mailto:nikki@caoutdoorproperties.com)