

The Goodyear House

Lassen County, California

\$100,000.00 | 10.00 Acres

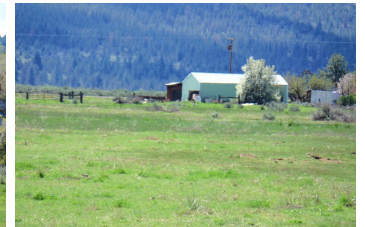
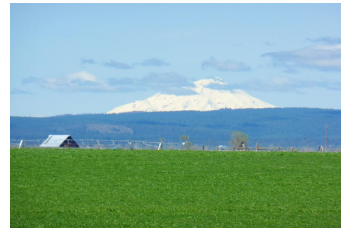
666-845 Hwy 299 East
 Adin, California

Great opportunity for the handy man! This 2 bedroom home has "nice bones" it just needs some TLC. The 10 acre parcel is level and fenced for animals. Perfect size for a small farm.



PROPERTY HIGHLIGHTS

- The entry is gated with a paved circle drive.
- Newer 750 sf. garage with large roll-up door and concrete floor.
- 25x40 metal shop with two rooms, large sliding door and concrete floor.
- Large concrete slab beside the metal shop.
- Three additional outbuildings plus insulated pump house.
- Located between Adin and Bieber, right in the heart of Big Valley with beautiful views including Mt. Shasta.
- Close to the 6000 acre Ash Creek wild life refuge.



DONNA UTTERBACK
 Territory Manager/Branch Manager
 BRE# 01199200
 Office: (530) 336-6869
 Cell: (530) 604-0700
fallriverproperties@frontiernet.net