

Oakridge Estates at Napa Valley's Lake Berryessa

California

\$549,000.00 | 10.00 Acres

1081 Steele Canyon Road
 California

Updated and very well maintained Country Home on 10 acres in Oakridge Estates at Napa Valley's Lake Berryessa. Well maintained 2 bedroom 2 bath home shows pride of ownership. Potential for 3rd bedroom and we have New Roof and Section 1 pest clearance. Updated bathrooms and kitchen, 6 burner Viking Range, newer carpet, windows and exterior paint.

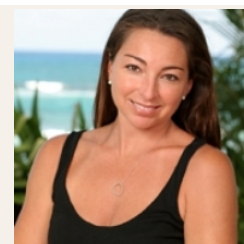


PROPERTY HIGHLIGHTS

- Updated and Well Maintained Country Home on 10 acres in gated Oakridge Estates
- 2 bedroom/2 bath and approximately 2225 square feet
- 6 burner Viking Range
- Newer Carpet and Windows
- All Large Appliances Remain
- New Roof and Section 1 pest clearance
- Kitchen and Bathrooms Updated
- Minutes to Boat Launch at Steele Canyon Recreation Area
- Just 35 minutes to the Heart of Downtown Napa Valley and it's World Famous Restaurants and Wineries



CECE SHORT
 Territory Manager
 BRE# 00783985
 Cell: (707) 337-0224
guidesvc@inreach.com



ROBIN SHORT
 Branch Manager
 BRE# 01890377
 Office: (707) 257-6772
 Cell: (707) 738-3006
shortnapa@gmail.com