

Napa Valley's Ink House

Napa County, California

\$1,650,000.00 | 1.25 Acres

1575 Saint Helena Hwy S.
 Napa, California

Historic Napa Valley Victorian estate on 1.25 acres located between Rutherford & St. Helena featuring aprox. 4000 sf home with 6 bedrooms & 8 baths. Meandering manicured grounds along with wrap-around verandas lead you to the cellar for wine tasting & billiards with the vintage grand old barn ripe with many memories awaiting your artistic & creative imagination. The inv...

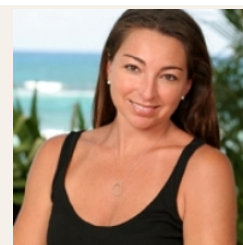


PROPERTY HIGHLIGHTS

- Approximately 4000 sf 3 story home with cupola featuring 6 bedrooms & 8 baths.
- Fully furnished for bed & breakfast clientele.
- 1.25 acres with manicured grounds.
- Vintage barn has power & water.
- Corral in the rear ideal for your hobby vineyard.
- Cellar awaits your winetasting/cigar smoking family & friends.
- Make this late 1800's Victorian your wine country home or continue to run as the existing Ink House Bed & Breakfast.



CECE SHORT
 Territory Manager
 BRE# 00783985
 Cell: (707) 337-0224
guidesvc@inreach.com



ROBIN SHORT
 Branch Manager
 BRE# 01890377
 Office: (707) 257-6772
 Cell: (707) 738-3006
shortnapa@gmail.com