

Sacramento River Parcel

Tehama County, California

\$295,000 | 20.00 Acres

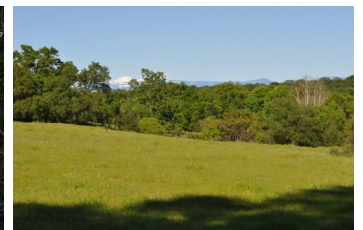
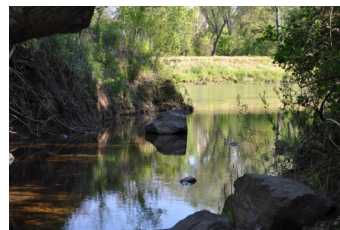
16542 Jellys Ferry Road
 Red Bluff, California

This 20 acre parcel has it all. 1675' feet of frontage on the mighty Sacramento River. Just nine miles from the town of Red Bluff, CA. Flat river frontage, rolling oak covered grass lands and part of Lookout Mountain. It has beautiful views of Mt. Lassen. Hunting, fishing, and horseback riding, what else would you want? Come build your dream home.



PROPERTY HIGHLIGHTS

- This is a gem of a property. River frontage on the Sacramento River is a much sought after treasure in California. This parcel has it all. Flat river frontage, rolling oak covered grass lands and part of Lookout Mountain. It has beautiful views of Mt. Lassen and of course the magnificent Sacramento River for over 1675' feet.
- It is the last parcel of the four parcel subdivision and is surrounded by a big cattle ranch. This property would work



TODD RENFREW
 Broker & Owner, ALC
 BRE# 01727574

Office: (707) 455-4444
Todd@caoutdoorproperties.com