

Berryessa Pines Lot #103

Napa County, California

\$109,950.00 | 0.20 Acres

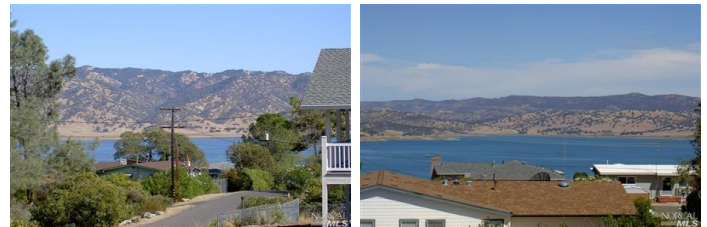
Blue Ridge Drive
Napa, California

"Screamin' Opportunity" awaits you in Berryessa Pines at Lake Berryessa, Napa Valley. Residential building lot located on a corner featuring terrific lake views. So get in on the ground floor as the "lake" is going through revitalization. The price is right!

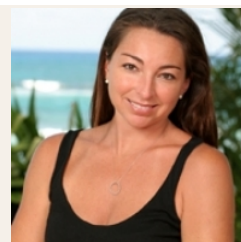


PROPERTY HIGHLIGHTS

- Vacant Lot #103 in Berryessa Pines at beautiful Lake Berryessa in Napa Valley.
- Seller has pre-paid the water/sewer hook-up fees so you are \$\$\$ahead in the process.
- Features terrific lake views, 5 minutes to the boat launch, 45 minutes to fine dining and wine tasting with being just about 1 1/2 hours from the Bay Area. Nearby hiking, biking, ATV fun, plus fishing & water sports with beautiful Lake Berryessa as your playground.



CECE SHORT
Territory Manager
BRE# 00783985
Cell: (707) 337-0224
guidesvc@inreach.com



ROBIN SHORT
Branch Manager
BRE# 01890377
Office: (707) 257-6772
Cell: (707) 738-3006
shortnapa@gmail.com