

E Olive Street, Porterville 2 Parcels for Development

Tulare County, California

\$4,403,315 | 90.79 Acres

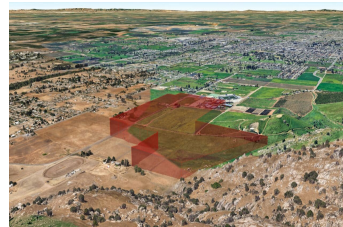
0 E Olive Ave
Porterville, California

A rare, large-format development opportunity in one of the San Joaquin Valley's steadily growing markets. Adjacent to Granite Hills High School, the site benefits from exceptional visibility. With utilities in close proximity and a flexible site accommodating a wide range of project visions, this is one of the most compelling land positions available in the region today.



PROPERTY HIGHLIGHTS

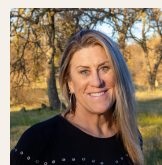
- 2 contiguous parcels totaling approximately 90.79 acres
- Located along East Olive Avenue — an established, well-traveled corridor
- Adjacent to Granite Hills High School — built-in community anchor and demand driver
- Utilities in close proximity — reduced entitlement and infrastructure risk
- Ideal for master-planned residential, mixed-use, commercial, or educational support development (buyer to verify)
- Exceptional visibility



BRANDON KEHOE
REALTOR®
BRE# 02252473
Cell: (559) 310-6483
bkehoe@caoutdoorproperties.com



ED PERRY
Real Estate Agent
BRE# 02083581
Cell: (916) 517-9969
outdoorprop@yahoo.com



JANET DELEO
Real Estate Agent
BRE# 02108215
Office: (707) 455-4444
Cell: (209) 304-2495
janetcaoutdoorprop@gmail.com



JEREMY PABST
Real Estate Agent
BRE# 02169038
Cell: (209) 304-7137
jpabstrealtor@gmail.com