

Highway 88–Pioneer Development Opportunity

Amador County, California

\$1,100,000 | 21.85 Acres

0 Hwy 88
Pioneer, California

This is a rare chance to acquire a partially advanced residential subdivision project and pick up where prior development left off. Featuring a planned mix of single-family, condominium, & commercial lots, this property comes with a previously completed tentative subdivision map, an established neighborhood layout, a constructed turn lane, & entitlement fees already paid....

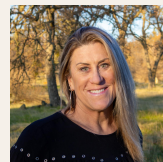


PROPERTY HIGHLIGHTS

- Mixed-use subdivision combining single-family lots, condominium lots, and commercial lots
- Prior tentative subdivision map completed — provides proven layout and engineering framework (expired; resubmission required)
- A dedicated turn lane has already been constructed for improved vehicular access to the development
- Entitlement and development fees previously paid - potential cost savings for the new owner



ED PERRY
Real Estate Agent
BRE# 02083581
Cell: (916) 517-9969
outdoorprop@yahoo.com



JANET DELEO
Real Estate Agent
BRE# 02108215
Office: (707) 455-4444
Cell: (209) 304-2495
janetcaoutdoorprop@gmail.com



JEREMY PABST
Real Estate Agent
BRE# 02169038
Cell: (209) 304-7137
jpabstrealtor@gmail.com