

#1 East Side of Road 208, Porterville

Tulare County, California

\$904,050 | 39.24 Acres

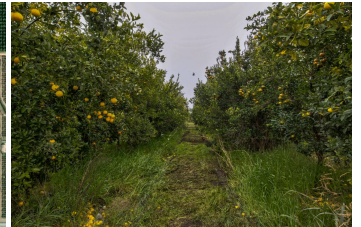
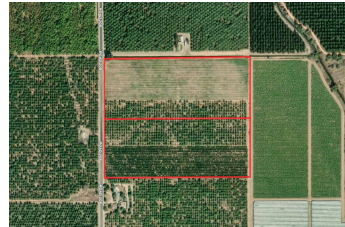
Road 208
Porterville, California

±39.24 acres of irrigated farmland in the Porterville Irrigation District featuring approximately 15 acres of producing mandarins and additional open, level ground. Well suited for permanent plantings, row crops, or diversified agricultural use, with flexibility for future development and expansion. Buyers to verify water resources and SGMA requirements.



PROPERTY HIGHLIGHTS

- ±39.24 acres of irrigated agricultural land
- Located within the Porterville Irrigation District
- Approximately 15 acres of producing mandarin orchard
- Balance of acreage is open, level, and farm-ready
- Suitable for permanent crops, row crops, or mixed ag use
- Flat terrain allows efficient farming and equipment access
- Opportunity for expansion, replanting, or future improvements
- Established agricultural area



BRANDON KEHOE

REALTOR®

BRE# 02252473

Cell: (559) 310-6483

bkehoe@caoutdoorproperties.com



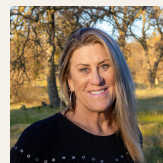
ED PERRY

Real Estate Agent

BRE# 02083581

Cell: (916) 517-9969

outdoorprop@yahoo.com



JANET DELEO

Real Estate Agent

BRE# 02108215

Office: (707) 455-4444

Cell: (209) 304-2495

janetcaoutdoorprop@gmail.com



JEREMY PABST

Real Estate Agent

BRE# 02169038

Cell: (209) 304-7137

jpabstrealtor@gmail.com