

Hwy 65 & Tule River, Porterville

Tulare County, California

\$6,516,900 | 100.26 Acres

Hwy 65 & Tule River
Porterville, California

±100.26 acres currently planted in almonds and located within the City of Porterville's adopted South of Tule River (SOTU) District Master Plan. The property offers flexible zoning, an exceptional opportunity to hold productive farmland today while planning for future development in the Central Valley.



PROPERTY HIGHLIGHTS

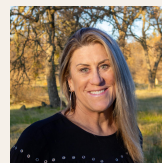
- ±100.26 acres
- Currently planted to almonds
- Located within the South of Tule River (SOTU) District Master Plan
- Master plan adopted by the City of Porterville
- Multiple zoning designations, including:
 - Commercial Mixed Use
 - High-Density Residential
 - Neighborhood Commercial
 - Industrial
- Suitable for mixed-use, residential, commercial, or industrial development



BRANDON KEHOE
REALTOR®
BRE# 02252473
Cell: (559) 310-6483
bkehoe@caoutdoorproperties.com



ED PERRY
Real Estate Agent
BRE# 02083581
Cell: (916) 517-9969
outdoorprop@yahoo.com



JANET DELEO
Real Estate Agent
BRE# 02108215
Office: (707) 455-4444
Cell: (209) 304-2495
janetcaoutdoorprop@gmail.com



JEREMY PABST
Real Estate Agent
BRE# 02169038
Cell: (209) 304-7137
jpabstrealtor@gmail.com