

# Clovis Acres

Fresno County, California

\$475,000 | 9.64 Acres

26900 Rye Meadow Lane  
Clovis, California

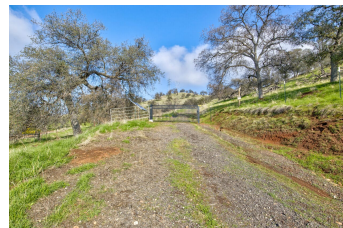
Experience 9.64 acres of peaceful foothill living just minutes from Clovis. This spacious parcel in the desirable 93619 area offers open land, privacy, and room to design the lifestyle you want. Build a custom home, create a private retreat, or develop a hobby farm or equestrian setup — the possibilities are wide open. Enjoy rural quiet with convenient access to Clovis and Fresno.



## PROPERTY HIGHLIGHTS

### Clovis Property Details

- 9.64± acres in the scenic Clovis foothills
- Desirable 93619 location with a true rural/foothill feel
- Space, privacy, and flexibility close to town
- Well and power installed, driveway and Pad
- Peaceful, lightly developed setting with open skies and potential views
- Ideal for a custom home, private estate, or retreat
- Room for equestrian facilities, hobby farm, garden



### BRANDON KEHOE

REALTOR®

BRE# 02252473

Cell: (559) 310-6483

[bkehoe@caoutdoorproperties.com](mailto:bkehoe@caoutdoorproperties.com)



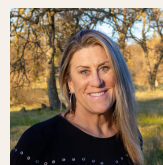
### ED PERRY

Real Estate Agent

BRE# 02083581

Cell: (916) 517-9969

[outdoorprop@yahoo.com](mailto:outdoorprop@yahoo.com)



### JANET DELEO

Real Estate Agent

BRE# 02108215

Office: (707) 455-4444

Cell: (209) 304-2495

[janetcaoutdoorprop@gmail.com](mailto:janetcaoutdoorprop@gmail.com)



### JEREMY PABST

Real Estate Agent

BRE# 02169038

Cell: (209) 304-7137

[jpabstrealtor@gmail.com](mailto:jpabstrealtor@gmail.com)