

# 3501 S Hwy 3

Siskiyou County, California

\$394,000 | 25.60 Acres

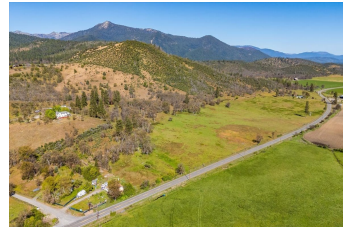
3501 S State Hwy 3  
Etna, California

Two homes on this pretty Siskiyou County 25.6+/- acre property, just a few minutes south of Etna! There is 1,302 sf, 3 bed, 1 bath house and a 332 sf guest cottage! Both homes are currently rented. They are very liveable, but could use some TLC and updating. Both units share a well, but they are on separate septic systems.



## PROPERTY HIGHLIGHTS

- Home and Guest Home!
- Rental?
- Pasture
- Horses and Cattle Allowed
- Great Views
- Small Town & Country Living
- Scott Valley
- Siskiyou County
- Northern California



**KATHY HAYDEN**  
Real Estate Agent  
BRE# 01081339  
Office: (530) 598-5336  
Cell: (530) 598-5336  
[RanchRE@yahoo.com](mailto:RanchRE@yahoo.com)



**AMY FRIEND**  
Real Estate Agent  
BRE# 01328922  
Office: (530) 598-5336  
Cell: (530) 518-6416  
[amy@amyfriend.com](mailto:amy@amyfriend.com)