

Churn Creek Ranch

Shasta County, California

\$1,595,000 | 23.00 Acres

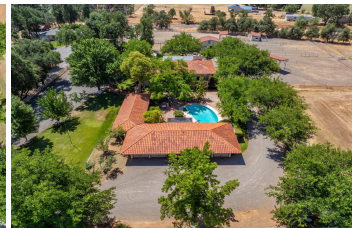
5521 Churn Creek Rd
Redding, California

Looking for a family compound? This is an amazing mini-ranch, with a large two-story home, Accessory Dwelling Unit, pool, pool house, 4-car garage, equestrian infrastructure, and rental income, all on 23 acres with Anderson-Cottonwood Irrigation District-irrigated pastures.



PROPERTY HIGHLIGHTS

- 23.0 Acres just outside of the Redding, CA city limits
- Located in Churn Creek Bottom
- Large 2-story home split into 3 separate living spaces but could be converted into a large single-family home if desired
- Pool House and loft above the barn are 2 additional living spaces (5 in total)
- Beautiful courtyard with common areas for each living space
- 4-car garage that is currently used as a ranch workshop in two bays and tenant laundry



SCOTT SODER

Real Estate Agent
BRE# 00984623

Cell: (530) 727-7572
scottsoder@aol.com