

# In The Pines Ranch

Siskiyou County, California

\$525,000 | 3.45 Acres

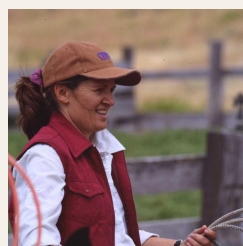
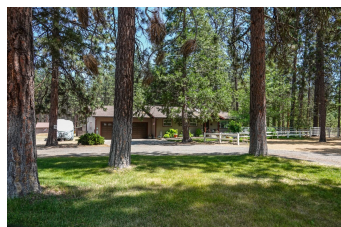
4216 N. Hwy 3  
Etna, California

Turnkey country home in Siskiyou County! If you're looking for a move-in ready, well cared, pride of ownership place, inside and out, this 3 bedroom home in the pines is just what you want! With a nice metal shop, two car garage, a great horse setup with small arena and nice landscaping, it's got it all in an easy to maintain package!



## PROPERTY HIGHLIGHTS

- 1,540 sf 3 Bed, 1 Bath Home
- Built in 1977, Updated
- Two Car Garage, Shop and Multiple Outbuildings
- Nice Horse Set Up - Arena, Horse Shelters, No Climb & Vinyl Fencing
- Nicely Landscaped, Lawns, Patio, Deck
- In Central Scott Valley
- Close to Etna, CA
- Siskiyou County
- Far Northern California



### KATHY HAYDEN

Real Estate Agent  
BRE# 01081339

Office: (530) 598-5336  
Cell: (530) 598-5336  
[RanchRE@yahoo.com](mailto:RanchRE@yahoo.com)



### AMY FRIEND

Real Estate Agent  
BRE# 01328922

Office: (530) 598-5336  
Cell: (530) 518-6416  
[amy@amyfriend.com](mailto:amy@amyfriend.com)