

Maison Rustique

Sonoma County, California

\$4,850,000 | 6.00 Acres

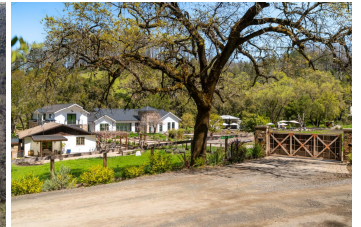
7007 Erland Road
Santa Rosa, California

Tucked in the rolling hills of Sonoma County, Maison Rustique is a secluded 6.14-acre estate featuring a newly built main residence, guest house, pool house, gym, and a carriage house, all set along a year-round creek and framed by open space preserve.



PROPERTY HIGHLIGHTS

- 6.14 private acres with a year-round creek, trees, and peaceful mountain meadow setting
- Main home (3,460 sq ft, built 2023) with 3 beds, 2 baths, chef's kitchen, and luxury primary suite
- Guest house (1,200 sq ft, remodeled 2018) with 1 bed, bonus sleeping space, bath, decks, and private jacuzzi
- Carriage house with 4-car garage, glass doors, and upstairs gym/yoga studio
- Refurbished barn for entertaining



BRIAN WHITE
 Real Estate Agent
 BRE# 02191158
 Cell: (707) 953-3807
pacificagriculture@yahoo.com



JIM MARTIN
 Real Estate Agent
 BRE# 01245738
 Cell: (707) 272-5507
molyneauxent@aol.com