

# Davis Ranch

Alpine County, California

\$4,500,000 | 630.93 Acres

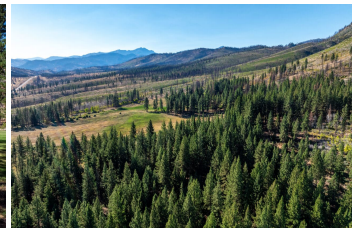
19320 State Highway 89  
Markleeville, California

Recently expanded 5 BD/ 3BA modular home with an oversized four-car garage. Over 794-acre ft. of surface water rights from year-round Randall Springs Creek & Indian Creek. Additional water includes springs, ponds, & two ag wells in the meadow pastures.



## PROPERTY HIGHLIGHTS

- 300 irrigated acres with an additional 50 acres sub-irrigated
- Irrigated pastures support about 159 yearlings & 10 bulls seasonally with a cattle lease in place
- Newer metal shop with concrete floor, three roll-up doors, & one man door
- The property generates enough solar power to be completely off the grid.



### TODD RENFREW

Broker & Owner, ALC  
BRE# 01727574 &  
NV#B.1001686

Office: (707) 455-4444

[Todd@caoutdoorproperties.com](mailto:Todd@caoutdoorproperties.com)