

# Mace Meadows Golf Course & Country Club

Amador County, California

\$1,250,000 | 108.58 Acres

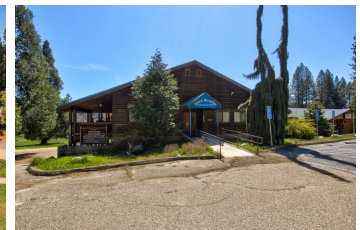
26570 Fairway Drive  
Pioneer, California

Incredible Business Opportunity offered in conjunction with Z. Gordon Davidson & Associates, Inc. Golf & Resort Properties! Mace Meadows Golf Course and Grille, situated in Pioneer, CA, boasts a prime location along Scenic Highway 88 in Amador County, just 70 miles from South Lake Tahoe and 75 miles from Sacramento International Airport.

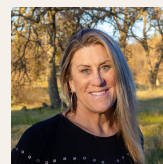


## PROPERTY HIGHLIGHTS

- 18 Hole Golf Course and Restaurant
- 4,000 sqft Events Center
- 4,000 sqft Pro Shop, Office, Locker Rooms
- 5,600 sqft Restaurant, Office, Dining Room, Bar
- 108.58 Acres
- 1st Parcels, 104.68 Zoned Recreational (APN#: 033-001-089-000)
- 2nd Parcel, 3.90 Zoned Commercial (APN#:033-530-020-000)
- 2 Bay Shop
- 16 Storage Garages
- 5 Ponds. some stocked
- Paved Parking
- Entrance to the Sierra Nevada Mountains
- 30 minutes to Kirkwood



**ED PERRY**  
Real Estate Agent  
BRE# 02083581  
Cell: (916) 517-9969  
[outdoorprop@yahoo.com](mailto:outdoorprop@yahoo.com)



**JANET DELEO**  
Real Estate Agent  
BRE# 02108215  
Office: (707) 455-4444  
Cell: (209) 304-2495  
[janetcaoutdoorprop@gmail.com](mailto:janetcaoutdoorprop@gmail.com)



**JEREMY PABST**  
Real Estate Agent  
BRE# 02169038  
Cell: (209) 304-7137  
[jpabstrealtor@gmail.com](mailto:jpabstrealtor@gmail.com)