

Lockeford Emporium

San Joaquin County, California

\$1,150,000 | 0.15 Acres

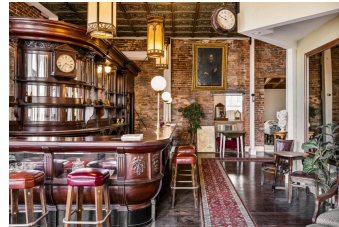
13480 E. State Highway 88
Lockeford, California

Lockeford Emporium: Built in 1883, this historic gem blends Victorian charm with modern amenities. The main floor boasts a mahogany bar, Tiffany art, and a rare piano. Upstairs, find a cozy AirBnB retreat. The basement offers speakeasy vibes for live music and recreation. This is a cherished landmark bridging wine country and cowboy culture.



PROPERTY HIGHLIGHTS

- Treasured in the Community
- Standing Piece of the American West
- Located between the Lodi Wine area and Cowboy Country
- 26,000 cars drive by each day
- Mahogany Bar from British Bankers Club in Menlo Park
- Tiffany Art Glass & Rare Antique Piano
- It can be used as a Bar or Restaurant
- Also used as Event Space - Rehearsal Dinner or Wedding Reception
- Second Story used as Air BnB
- Basement Ideal for Speakeasy or Jazz Lounge



BRUCE RENFREW
Real Estate Agent, ALC
BRE# DRE#01995642 &
NV S.0189809

Cell: (650) 773-1863
bruce@caoutdoorproperties.com



SANDY BALLOU
Real Estate Agent
BRE# 01926586

Cell: (916) 261-8192
sballou4@gmail.com